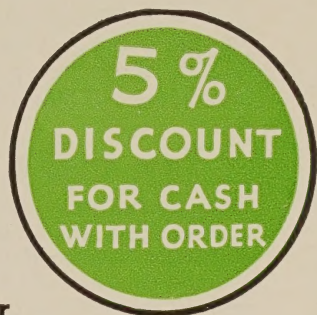


62

FORBES SEEDS

for
Market-Gardeners
and Florists



1958 Our 60th Year



LIBRARY
RECEIVED
★ DEC 3 1957 ★
U. S. Department of Agriculture

NEW MAYTIME PETUNIA. Huge clear light salmon pink fringed flowers on very uniform, compact, base-branching plants which spread 24 to 30 inches. 1/2tr. pkt. \$2.50; tr. pkt. \$4; 1/128oz. \$7; 1/64oz. \$12.

ALEXANDER FORBES & CO.
SEEDSMEN • MILLBURN, NEW JERSEY

1898 - *Forbes Seeds* - 1958

Sixty Years — Forbes Seeds for Best Seeds

For your good-will we are truly grateful. It encourages us to carry on in our sixtieth year with firm determination that our high standard of quality shall never relax. It is our aim at all times to fully deserve your continued confidence through the coming years.

Try these new and tried strains for 1958

- Beet, Ruby Queen.** This All-America for 1957, in about 52 days, yields full, smooth-shouldered, bright red globes with 12-inch dark green tops.
- Cabbage, Yellows-Resistant Greenback.** A new 74-day, darker green, more compact, round head like Marion Market. Vigorous, short-stemmed, slow to seed.
- Hybrid Sweet Corn, Golden Beauty.** This fine 69-day hybrid has $7\frac{1}{2}$ -8 inch, bright yellow, 12-rowed ears of good flavor on wilt-tolerant, 5 to 6 foot sturdy stalks.
- Cucumber, Ashley.** A week earlier and darker than Marketer, this is very highly resistant to downy mildew. The 8 to 9 inch, white spined, very dark black-green fruits taper slightly at the stem end. The vines are vigorous and productive.
- Lettuce, Great Lakes 659.** The plants and heads are smaller than our XXX strain but 4 days earlier. The leaf edges are more frilled.
- Lettuce, Parris Island Cos.** A dark green, sure heading, slow bolting, mosaic resistant Cos with less tip-burn. Upright, cylindrical, heads, slightly crumpled.
- Muskmelon, Golden Delight.** Fine oval, blue-grey, heavily netted, 7 by $7\frac{1}{2}$ -inch melons with very thick orange flesh of real sweet flavor for local stand sale.
- Pepper, Talianelle.** Again we have the original strain of this Italian frying pepper. Upright, thin-skinned, smooth, shiny yellow-green, 5 by 2 inches, and tapering to a blunt point. The dwarf bushes are covered with red peppers at maturity.
- Pepper, Keystone Giant (Mosaic Resistant).** The thick walled fruit is blocky in shape and sets in great numbers about even in time with Yolo Wonder. The sturdy, bushy plants are very highly resistant to mosaic.
- Pumpkin, Jack o'Lantern.** Best for Hallowe'en, these smooth, round, orange fruits, 8 to 9 inches deep and 7 to 8 inches across in about 110 days, are fine eating.
- Radish, Champion.** All America, 1957. True ball-shaped, thin tap-rooted, clear shiny bright scarlet radishes of the size of a silver dollar. Keep solid and hard for a long time in spite of the large size. A king size Cherry Belle with larger tops.
- Tomato, Queens.** Praised by all who try it. The very, very firm Tomatoes mature a week before Rutgers, are deep-globed, smooth, red and average 5 ounces.

Terms. We gladly open charge accounts for persons of approved credit. Transportation charges on all seed orders are either prepaid or shipped collect and the charges deducted from your invoice with the exception that shipments of **ONLY Beans, Corn, Peas, Radish and Spinach by themselves** will be shipped collect, or if sent by mail the postage will be added to your invoice. We ship by Parcel Post, Express or Freight, whichever is cheapest. If you specify Express where we would ship by Freight, you'll be charged for the difference between Express and Freight. We make no charge for bags.

In small seeds, we supply, unless otherwise specified, $\frac{1}{2}$ ounce at the ounce rate, $\frac{1}{2}$ pound at the pound rate, and, when there are no specific prices for the following, we supply 5 lbs. at the 10-lb. rate, 25 lbs. and over at the 100-lb. rate, 250 lbs. and over at the 1000-lb. rate. In Peas, and Beans, we supply 25 lbs. and over at the 100-lb. rate, in Corn, 30 lbs. and over at the 100-lb. rate. Write for special prices on large quantities.

All orders are subject to approval of Alexander Forbes & Co. and acceptance by them at Millburn, New Jersey. **Disclaimer:** Alexander Forbes & Co. warrant, to the extent of the purchase price, that Seeds, Bulbs, or Plants sold are as described on the container, within recognized tolerances and give no other or further warranty, express or implied.

All prices in this Catalog are subject to change without notice

FORBES 1958 VEGETABLE SEEDS

This Seed Catalog offers the best seeds at fair prices. Since 1898 we have carefully compared the world's new strains with those of our own breeding. New varieties come, have their day, and are replaced by still better ones. We list the very best varieties prominently. They are the ones to use. On merit, they have survived through the years or have displaced others.

All Vegetable seed is carefully tested. Each lot is marked with its germination.



Early Wonder Selected Beet

BEETS

1/4 lb. sows 250 feet of row; 7 pounds per acre for rows 18 inches apart

Ruby Queen. This All-America for 1957, in about 52 days, yields full, smooth-shouldered bright red globes with 12-inch dark green tops.

King Red. This is a short-topped Perfected Detroit with smooth skinned, uniform, rounded roots which cut dark red. The 12-inch tops are dark green tinged with deep red. It's new, try it.

Crosby's Egyptian, Dark. Very early, uniform, smooth, real dark blood-red roots, round but slightly flat on top. The medium bunching tops are deep green tinged brown.

Detroit Dark Red, Short-Top. Earlier than regular Detroit and very uniform, with short tops fine for muck or rich upland soils where tops grow tall.

Detroit Dark Red Selected. Smooth, uniform, near-globe roots which cut dark black-red throughout. Green tops red-veined. As the tops hold up well in hot weather it is specially suitable for late summer and fall bunching.

Early Wonder, Selected. A very early, perfect bunching Beet; deep blood-red, near-globe roots and nice tops. Our superior strain is very even in shape, dark color and size and is extra fine for transplanting purposes.

Early Wonder, Green Top. Uniform, very dark red, round, slightly flattened roots with erect, gray-green tops suitable for greens. Fine quality, deep red flesh.

Perfected Detroit. Like Detroit Dark Red but with 20-inch green tops.

ASPARAGUS		Oz.	1/4 lb.	Lb.	5 lbs.	10 lbs.	25 lbs.	100 lbs.
Mary Washington Rustproof		\$0 20	\$0 65	\$2 00	\$17 50			
BEETS		Oz.	1/4 lb.	Lb.	5 lbs.	10 lbs.	25 lbs.	100 lbs.
Crosby's Egyptian, Dark		\$0 20	\$0 50	\$1 50	\$7 00	\$13 00	\$31 25	\$120
Detroit Dark Red, Selected		20	50	1 50	7 00	13 00	31 25	120
Detroit Dark Red, Short-Top		20	50	1 30	6 00	11 00	26 25	105
Early Wonder, Selected		20	50	1 50	7 00	13 00	31 25	120
Early Wonder, Green Top		20	50	1 50	7 00	13 00	31 25	120
Early Wonder, Tall Top		20	50	1 50	7 00	13 00	31 25	120
King Red		20	50	1 50	7 00	13 00	31 25	120
Perfected Detroit		20	50	1 30	6 00	11 00	26 25	105
Ruby Queen		25	65	2 00	9 00	17 50		
For Greens (round roots)		20	50	1 30	5 75	10 50	23 75	95

ASPARAGUS

One pound will produce 5000 roots

Mary Washington Rustproof. A fine U. S. Dept. of Agriculture strain making very rapid, vigorous growth. The large, thick deep green stalks are purple-tipped.

DWARF GREEN-PODDED BEANS

One pound will plant 100 feet of row; 60 pounds will plant an acre

Black Valentine, Asgrow Stringless. Large, erect prolific plants with attractive dark green, $6\frac{3}{4}$ -inch pods, entirely stringless and of fine quality in 50 days. This is the preferred strain with nearly straight pods of oval cross section.

Contender. Vigorous, very prolific plants resistant to mosaic and powdery mildew. In 54 days, matures 7-inch dark green, smooth, slightly curved, stringless pods of oval cross section. Fine for market, shipping and freezing when young. The most important feature of Contender is that it produces very heavy yields.

Longreen. This is identical with Tendergreen but with pods one inch longer. They are round, straight, dark green, over 7 inches long, stringless and of good quality and ready to pick in 56 days. The vines are very productive.

Supergreen. The 17-inch, upright vines, with fairly localized pod set, in 58 days produce heavy yields of smooth, slim, straight, dark green, 7-inch pods which are stringless in all stages. The round pods are more slender than Longreen.

Topcrop. Vigorous, well-branched, 16-inch plants, immune to mosaic, with 6-inch round, straight to slightly curved, strictly stringless pods, paler green than Supergreen, in 52 days. Yields heavily during a short picking period. Fine for freezing.

Wade. 1952 All-America. Tall vigorous quite upright plants with heavy yields of straight, slender, smooth, dark green, $5\frac{1}{2}$ to 6-inch round pods of fresh appearance in 57 days. They resist mosaic and powdery mildew. Fine for main crop.

DWARF WAX-PODDED BEANS

Cherokee Wax. A golden yellow counterpart of Asgrow Stringless Black Valentine with heavy yields of handsome, straight, $6\frac{1}{2}$ -inch, oval golden pods, meaty and of good quality in 50 days. The vines are vigorous and productive.

BUSH LIMA BEANS

One pound for 100 feet; 60 lbs. for an acre

Fordhook 242. Matures in 68 days, one week earlier than Fordhook. It stands hot dry weather better, sets its pods under more adverse conditions and yields particularly on first pickings, half again as many uniform, straight pods with 3 to 4 thick Beans.

GREEN POLE BEANS

Use 1 lb. for 100 hills; 30 lbs. will plant an acre

Kentucky Wonder Pole. Deeply creased, 7 to 9-inch pods, meaty, and stringless. Very prolific, bearing heavily throughout.

POLE LIMA BEANS

Challenger. Straight 6-inch pods, each containing 4 to 6 large, green plump Beans.

BRUSSELS SPROUTS

One ounce will produce 2500 plants

Catskill. So much better than all others, this is in a class by itself. The plants are very dwarf, uniform and compact, each with a heavy set of large, firm sprouts. Will meet the most critical demand.

Italian Green
Sprouting
Calabresi Broccoli



BROCCOLI

One ounce will produce 2500 plants

Italian Green Sprouting Calabresi. After cutting the center head of tight blue-green flower-buds, the plants form side-shoots with smaller heads. These, cut and bunched over a period of 8 weeks, are tender and of very delicate flavor. This is a very fine strain.

Green Mountain. Very large, dark green, tight center heads week before Calabresi. Side heads slowly approach size of centers.

Waltham No. 29. For fall crop. Large dark blue-green, tight heads mature slowly at one time. Many side shoots, often a pound per plant.

Broccoli
needs lots
of boron
in soil

BROCCOLI		1/4oz.	Oz.	1/4lb.	Lb.	5 lbs.		
Green Mountain.....		\$0 30	\$0 90	\$2 65	\$8 00	\$38 75		
Italian Green Sprouting Calabresi.....		25	65	1 85	5 50	26 25		
Waltham No. 29.....		30	90	2 65	8 00	38 75		
BRUSSELS SPROUTS								
Catskill.....		75	2 00	6 50	20 00			
BEANS, DWARF GREEN		Lb.	5 lbs.	10 lbs.	15 lbs.	25 lbs.	60 lbs.	100 lbs.
Black Valentine, Asgrow Stringless..	\$0 50	\$1 90	\$3 50	\$4 80	\$7 50	\$18 00	\$30	
Contender.....	50	2 00	3 70	5 10	8 00	19 20	32	
Longgreen or Long Tendergreen...	50	2 05	3 80	5 25	8 25	19 80	33	
Supergreen.....	50	2 20	4 10	5 70	9 00	21 60	36	
Topcrop.....	50	2 30	4 30	6 00	9 50	22 80	38	
Wade.....	50	2 20	4 10	5 70	9 00	21 60	36	
DWARF WAX								
Cherokee Wax.....	50	1 95	3 60	4 95	7 75	18 60	31	
BUSH LIMA								
Fordhook 242.....	50	2 00	3 70	5 10	8 00	19 20	32	
POLE LIMA								
Challenger.....	50	2 05	3 80	5 25	8 25	19 80	33	
POLE, GREEN								
Kentucky Wonder.....	50	1 75	3 30	4 50	7 00	16 80	28	

We supply 25 lbs. and over at the 100-lb. rate. Write for special prices on large quantities

CABBAGE

One ounce for 2000 plants; ¼lb. to ½lb. for an acre

For fall crops many growers drill the seed directly in the field, later thinning out to the desired spacing between plants in the row. This avoids the hazard of transplanting losses and insures continued growth during the usual heat and drought of late summer.

EARLY VARIETIES

Green Acre. The uniform heads of this fine variety are like Golden Acre but are larger, greener, and very few days later. The uniform, compact plants are quite short-stemmed and have but few outer leaves. The intense green leaves make the heads appear fresh.



Super Strain Golden Acre Cabbage

Golden Acre, Super Strain. A superior Danish strain which resembles the old Copenhagen Market but the medium-sized, firm heads, 4 to 5 pounds each, mature one week earlier than our Copenhagen Market. The dwarf, compact plants, with rather small frame, can be set closely to give a very heavy yield.

Yellows-Resistant Golden Acre XXX. An improvement with earlier, more uniform, firm round heads on short-stemmed, compact, yellows-resistant plants.

Yellows-Resistant Racine Market. Of Golden Acre size but maturing later in about 70 days. The heads are round, compact and solid, dependably uniform and of fresh gray-green color. Similar in leaf and head to Copenhagen Market. Excellent for early market and shipping. Stands long without splitting.

Copenhagen Market. The round, solid heads, larger than Golden Acre, are of fine quality and very uniform. The light green leaves fold tightly over one another. The sturdy plants are short-stemmed, with the heads just above the ground.

Yellows-Resistant Wisconsin Copenhagen Market. The plants of this new strain are 10 to 12 inches tall with blue-green foliage. In 62 days from setting out they mature 4½-pound, round, very compact heads, each just like the next. They are fine for market, shipping or early Kraut. Withstands adverse conditions better than other early resistant varieties.

SECOND-EARLY VARIETIES

Bonanza. Outstanding for market and shipping. The almost round, short-cored, very uniform green heads are very hard when as small as a baseball and may be cut at any size desired. Mature in 75 days and stand long without cracking.

Yellows-Resistant Globe XXX. More compact and uniform than the above and just as yellows-resistant. An ideal variety for shipping, market and for Kraut.

Yellows-Resistant Greenback. A new 74-day, darker green, more compact, round head like Marion Market. Vigorous, short-stemmed, slow to seed.

Yellows-Resistant Marion Market. Broadly round, blue-green, 5-pound hard heads but the plant is larger than Y. R. Copenhagen Market, maturing in about 74 days.

SAVOY CABBAGE

Perfection Drumhead, XXX. Strong plants have but few outer leaves growing closely about the large, solid, very hard, round, nice green heads. The leaves are very heavily crimped or savoyed. Mild flavor.

RED CABBAGE VARIETIES

Red Acre. The deep red, hard heads are extremely uniform and sure heading. Matures just after Copenhagen. Has shape and size of Golden Acre.

Yellows-Resistant Early Red. Plants small, compact, short-stemmed, ready in about 80 days. Deep red, round heads, very hard, 3 to 3½ lbs.

LATE CABBAGE VARIETIES

Penn State Ballhead, Select. A hard-heading selection of Danish Ballhead which will yield an increased tonnage per acre. The heads are solid, uniform, fine-grained, on short stems, and keep well. Well suited to early May seeding, setting plants in early June to mature in early September when Cabbage brings high prices. A consistently heavy yielder.

Danish Roundhead, Short Stem. Vigorous, compact, short-stemmed plants with few, upright, large leaves. The very solid, round, medium-sized hard heads ship perfectly and keep well.

Yellows-Resistant Pennvalley. This quite closely resembles Penn State Ballhead but the solid big heads are held well off the ground on longer stems. They are fairly uniform.

Yellows-Resistant Wisconsin Hollander No. 8. The heavy, hard, round "Ballheads," slightly flattened, are unexcelled for storing, shipping and kraut manufacture. Each weighs 7 to 9 pounds.

CHINESE CABBAGE

Special Narrow Head. A great specialty of ours. Upright, tapered heads, 15 to 18 inches tall and 4 to 5 inches across, are very solid, well blanched, crisp and of delicious flavor. Drill seed in July (earlier bolts to seed). They mature in 8 to 10 weeks and keep for a long time in storage.

Michihli. A Michigan improvement of the Chihli strain developed for quality and sure heading habit. The growth is vigorous with rich dark green outer leaves without any yellowish cast. The trimmed heads often reach 26 to 28 inches in length and are very firm. They blanch well, are crisp, tender and of fine flavor.



Special Narrow Head
Chinese Cabbage

CARDOON

One ounce will grow 300 plants

Spanish. Large, fleshy-leaved plants, used as a winter vegetable. The blanched stalks and ribs of the inner leaves when cooked are tender and of an agreeable flavor. Blanch by tying up leaves. The main stalks are blanched like celery.

CABBAGE, EARLY	¼oz.	Oz.	¼lb.	Lb.	10 lbs.
Copenhagen Market.....	\$0 25	\$0 65	\$1 85	\$5 50	\$52 50
Golden Acre, Super Strain.....	30	85	2 50	7 50	72 50
Green Acre.....	30	80	2 35	7 00	67 50
Yellows-Resistant Golden Acre XXX.....	30	85	2 50	7 50	72 50
Yellows-Resistant Racine Market.....	30	85	2 50	7 50	72 50
Yellows-Resistant Wisconsin Copenhagen Mkt..	30	90	2 65	8 00	77 50
SECOND-EARLY					
Bonanza.....	35	1 00	3 00	9 00	87 50
Yellows-Resistant Globe XXX.....	30	85	2 50	7 50	72 50
Yellows-Resistant Greenback.....	30	85	2 50	7 50	72 50
Yellows-Resistant Marion Market.....	25	70	2 00	6 00	57 50
LATE					
Danish Roundhead, Short Stem.....	25	75	2 20	6 50	62 50
Hollander, Ferry's.....	25	75	2 20	6 50	62 50
Penn State Ballhead, Select.....	30	90	2 65	8 00	77 50
Yellows-Resistant Bugner's.....	30	80	2 35	7 00	67 50
Yellows-Resistant Pennvalley.....	30	90	2 65	8 00	77 50
Yellows-Resistant Wisconsin Hollander No. 8...	30	80	2 35	7 00	67 50
SAVOY					
Chieftain.....	30	80	2 35	7 00	67 50
Perfection Drumhead, XXX.....	30	80	2 35	7 00	67 50
RED CABBAGE. Red Acre.....					
Yellows-Resistant Early Red.....	35	1 00	3 00	9 00	87 50
CHINESE CABBAGE					
Special Narrow Head.....		30	85	2 50	22 50
Michihli.....	15	35	1 00	3 00	27 50
CARDOON. Spanish.....					
	25	70	2 00	6 00	

CARROTS

One ounce will sow 100 feet of row; 3 pounds will sow an acre

Chantenay Long. These uniform, smooth, clean, nicely colored roots $6\frac{1}{2}$ to 7 inches long have substantial tops that will not break off after being bunched. Fine on upland soils where it runs very uniform in size and shape, and holds its bright orange color. Our strain is extra fine.

Gold Spike. A smooth, uniform 9-inch bunching Carrot with short dark green tops. Longer and slimmer than Emperor Long and of fine quality with small core.

Nantes XXX. This, a *de luxe* strain, meets the most exacting needs for uniformity of form, size, and color. These cleaner, brighter orange, finer-textured roots average 7 inches long and $1\frac{1}{4}$ inches across and are nearly coreless. The top is ordinarily small and short, but when grown on muck soil, tops grow larger. This makes it ideal for muck-soil bunching. Try it this year.

Nantes, Strong Top. The tops will not break off when pulling. The bright orange, smooth root is cylindrical, $6\frac{1}{2}$ inches long and $1\frac{1}{4}$ inches across, with blunted end and small tap-root. The coreless flesh is red and sweet.

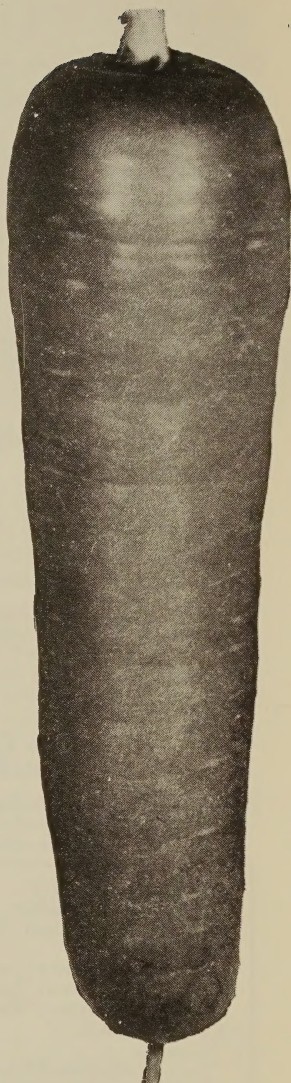
Coreless. Very early maturing, cylindrical, blunt-ended, smooth, clean roots, 6 by $1\frac{1}{4}$ inches with tiny tap-roots and small, fine tops. The red-orange flesh is tender, and without any core.

Hutchinson XXX. There is none finer than this *de luxe* strain to meet the most exacting needs for uniform size, form and color. The cylindrical roots are 10 inches long, taper very slightly, and cut light orange with a large faint core.

Imperator, Long Strain. This is a long Carrot, averaging 8 inches, and somewhat stump-rooted. Both small core and flesh are deep orange. Its fine bunching tops and smooth, attractive, uniform roots are ideal for local market or for shipping.

Morse's Bunching. Slightly tapering, cylindrical roots, 8 by $1\frac{1}{4}$ inches, with half-stumped points. Short, coarse, strong tops and easily pulled. Flesh deep orange and coreless. Fine for long bunching Carrots.

Touchon. This is an early maturing strain with smooth, fine textured, cylindrical roots which come to a blunt end with small tap-roots. They are about 6 inches long and over an inch across, of bright orange color. The flesh is tender, reddish orange and free from core. The tops are small but on muck they grow larger.



Chantenay Long Carrot

CORN SALAD

Three ounces sow 100 feet of row

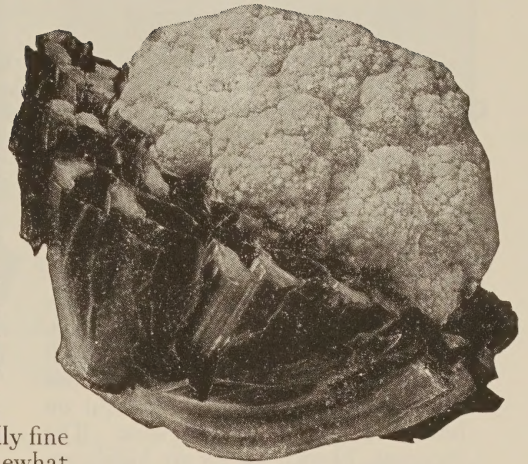
Broad-Leaf. Hardy rosettes of tender edible leaves used as a substitute for lettuce. Grown for late fall, winter, and spring use.

CARROTS	Oz.	$\frac{1}{4}$ lb.	Lb.	5 lbs.	10 lbs.	25 lbs.	
Chantenay Long.....	\$0 25	\$0 65	\$2 00	\$9 50	\$17 50	\$41 25	
Coreless.....	30	90	2 75	13 50	25 50	61 25	
Gold Spike..... $\frac{1}{4}$ oz. 15c..	45	1 25	3 75	18 25	35 50	87 50	
Hutchinson, XXX.....	30	85	2 50	12 25	23 00	55 00	
Imperator Long Strain.....	30	90	2 75	13 50	25 50	61 25	
Morse's Bunching.....	35	1 00	3 00	14 75	28 00	67 50	
Nantes, Strong Top.....	35	1 00	3 00	14 75	28 00	67 50	
Nantes, XXX.....	30	90	2 75	13 50	25 50	61 25	
Touchon.....	30	90	2 75	13 50	25 50	61 25	
				Oz.	$\frac{1}{4}$ lb.	Lb.	5 lbs.
CORN SALAD. Broad-Leaf.....			\$0 20	\$0 75	\$2 25	\$10 50	

CAULIFLOWER

One ounce will produce 1500 to 2000 plants;
6 to 8 ounces will plant an acre

"The Forbes." This fine outstanding variety far surpasses any other for early or late crop. It is of the Snowball type but the crop heads up practically all at one time. For this reason, do not use it for large main-crop plantings unless planted in succession. It excels all Snowball and Erfurt Cauliflowers for vigor and freedom from disease and produces first-grade No. 1 heads, even under adverse growing conditions. "The Forbes" has unusually fine protection. The leaves are broad, somewhat crumpled, and without any bare stem.



"The Forbes" Cauliflower

Forbes Reliance. A truly *de luxe* strain in which nearly every plant produces very deep, unusually heavy, No. 1 heads with fine white curds. The large, thrifty plants are thoroughly well protected, both by the form of their growth and by the abundant foliage. The heads vie as to size, color and weight with the best and we believe the plants are more than ordinarily resistant to climatic and moisture extremes. Forbes Reliance is one of the best for main crop.

Snowball No. 25. This new strain is in the White Mountain class with heavy, clean curds of large size and smooth form. The large, mid-green plants have ample foliage. It starts maturing heads after White Mountain but cleans up in less time. We suggest that you try this under your growing conditions.

Snowball Five. The plants resemble Reliance but are slightly smaller and, over a short time, produce earlier nearly 100% cut of quite large, smooth, deep white curds which are well protected by long erect leaves. Best for fall and summer.

White Mountain. Where other strains have failed, White Mountain has, by its inherent resistance, produced perfect crops. The very uniform heads, with a pure white curd, have great depth, with no "riciness" or interleaves. The foliage is medium-sized, with inner leaves which fully protect the head.

COLLARDS

One ounce will sow 200 feet of row

Vates. Large cabbage-like leaves on upright stems, dwarfer and more compact than Georgia.

Georgia. Large cabbage-like leaves, which grow loosely on stems 2½ to 3 feet tall. Does not form heads. May be sown in spring and transplanted like cabbage or drilled in June or July.

CAULIFLOWER	Pkt.	¼oz.	Oz.	¼lb.	Lb.
Early Snowball, Forbes Strain.....	\$0 20	\$1 10	\$3 35	\$10 00	\$35 00
Forbes Reliance.....	20	1 20	3 65	10 85	38 00
Snowball Five.....	25	1 35	4 00	12 00	45 00
Snowball No. 25.....	20	1 10	3 35	10 00	35 00
Snowdrift.....	20	1 10	3 35	10 00	35 00
"The Forbes".....	20	1 10	3 35	10 00	35 00
White Mountain.....	20	1 10	3 35	10 00	35 00
COLLARDS		Oz.	¼lb.	Lb.	5 lbs.
Georgia.....		\$0 15	\$0 40	\$1 25	\$5 50
Vates.....		20	50	1 40	6 25

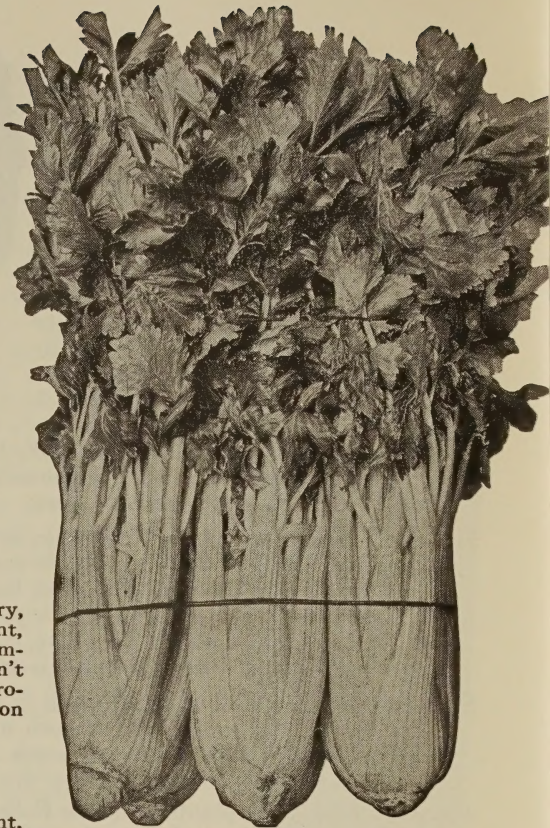
YELLOW CELERY

*One ounce grows 8000 plants;
1/4 pound plants an acre*

Golden Plume, Taller Strain. This has a clean, large, full plumed center, heavy solid stalks and heart. Matures early, tends less to blight or crown rot than any other Golden Plume. Will blanch readily and commands top prices through its season.

Cornell No. 19. The stalks are 8 inches to the joint, smooth ribbed and deeply rounded. The hearts are long and well developed. The flesh is thick, tender and stringless. Highly successful on both muck and upland soils. The vigorous, 24-inch plants are highly resistant to fusarium yellows. As it tends to produce seeders if planted too early, we suggest it for main crop. Blanches quickly; stores well.

Cornell No. 619. This yellows-resistant Celery, with thick edible ribs, averages a 9-inch joint, one inch more than Cornell 19, so the compact, vigorous plants are slightly taller. Don't use for early crop as cold weather may produce seeders. Excellent for main crop on muck and upland.



Golden Plume Celery

GREEN CELERY

King Pascal. The stems, 6 inches to the joint, are very smooth and glossy, deeply rounded, almost closing on the inside. The heart is larger than Summer Pascal and the stalks blanch better. King Pascal keeps well. It is the crispest, best eating Celery of all. Best for summer and fall crop, it can also be sown with early-crop Celery as it shows a strong tendency not to go to seed. It trims for market with very little loss and has extra fine flavor and quality.

Tall Utah. (52-70) A fine storage variety 28 to 30 inches tall with 10 to 11-inch, rounded, smooth thick, medium dark green stems. With a high rib count it makes large sizes, has high hearts, is very compact.

Utah No. 15. Compact, full-hearted, 26 to 28-inch plants with 8 to 10-inch, thick, round stems.

CELERIAC One ounce sows 800 feet

Dwarf Moonarchie Improved. Large, smooth roots of fine quality, used as a flavoring or as a salad. The "knob" will grow larger if the outer leaves are pulled and used for soup greens. This strain is fine-grained, free from side roots, and has a short top.

CELERY	Pkt.	1/4oz.	Oz.	1/4lb.	Lb.	10 lbs.
Cornell No. 19.	\$0 20	\$0 75	\$2 20	\$6 60	\$23 00	\$200 00
Cornell 619.	25	75	2 00	6 50	20 00	170 00
Golden Plume, Taller Strain.	20	75	2 00	6 50	20 00	170 00
King Pascal (Improved Summer Pascal)	15	55	1 65	5 00	15 00	140 00
Tall Utah (52-70)	20	75	2 20	6 60	23 00	200 00
CELERIAC, Dwarf Moonarchie Improved	10	30	90	2 65	8 00	75 00

HYBRID SWEET CORN

One pound plants 200 hills; 12 pounds an acre

Carmelcross, Improved. A hybrid of unusually high quality. The deep yellow, 12 to 14-rowed, 8-inch ears come on stalks 5½ feet high and are ready to pick in 74 days, just nicely following Marcross C13.6. Is very highly disease-resistant.

Earliest Market King. For northern sections it matures high quality. 7 to 8-inch by 1¾-inch, golden yellow ears in 64 days. These are mostly 12-rowed and appear first as low as 18 inches from the ground on 5½-foot vigorous stalks. Dark green husks give good protection.

Golden Beauty. A 69-day hybrid with 7½ to 8-inch bright yellow, 12-rowed ears of good flavor on wilt-tolerant, 5 to 6-foot sturdy vigorous stalks.

Golden Cross Bantam. The uniform stalks have broad dark green leaves, 8-inch, 10 to 14-rowed yellow ears at one time in 86 days. It is 95 per cent immune.

Golden Rocket. The 8-inch, 10 to 14-rowed, bright yellow ears are produced on stalks, 5½ to 6 feet high, in 68 days. Sweet and has superior quality.

Hoosier Gold. Sturdy, medium high plants yield long cylindrical, tightly packed, creamy gold ears with dark green husks in 77 days.

Ioana. A fine disease-resistant main-crop variety often withstanding more drought than Golden Cross Bantam. The broad-leaved, 6½ to 7½-foot stalks, bear cylindrical, 12 or 14-rowed, tender, cream-yellow 7½ to 8½-inch ears in 88 days.

Iochief. The 7 to 7½-foot, suckerless stalks, in spite of drought, in 87 days bear well-filled, cylindrical, 8 to 9-inch, tightly husked, 14 to 20-rowed ears with very deep, narrow, golden yellow kernels of top quality for canning, freezing or market.

Iroquois Golden. Big, 9 to 10-inch ears with 16 to 18 rows of golden kernels ready in 88 days on 8 to 8½-foot, dark green stalks, free from suckers. The dark green tight husks resist smut and ear worms. Makes ears even in hot, dry weather.

Marcross C13.6. One of the best early hybrids. The 5-foot stalks produce 7-inch, 10 to 14-rowed, golden yellow ears well filled to the tip in 71 days. Highly disease-resistant, well over 85 per cent of the ears are usually marketable.

Narrow Grain Evergreen. A white hybrid. The 7-inch ears, uniformly tapered with 18 to 22 rows of narrow, deep white kernels, mature in 91 days on 8-foot stalks.

Spancross Improved C3.13. The 10 to 12-rowed, deep yellow ears in 67 days are 6 to 7 inches long and well filled, about two to each 4 to 5-foot stalk.



Carmelcross Hybrid Sweet Corn

Our Corn Seed is graded to size so that your seeder will plant it more evenly.

SWEET CORN, HYBRIDS	Lb.	5 lbs.	10 lbs.	15 lbs.	25 lbs.	100 lbs.
Carmelcross, Improved	\$0 70	\$2 75	\$5 20	\$7 35	\$11 50	\$43 00
Earliest Market King	70	3 35	6 40	9 15	14 50	55 00
Golden Beauty	70	3 00	5 70	8 10	12 75	48 00
Golden Cross Bantam	70	2 90	5 50	7 80	12 25	46 00
Golden Rocket	70	2 90	5 50	7 80	12 25	46 00
Hoosier Gold	70	2 75	5 20	7 35	11 50	43 00
Ioana	70	2 75	5 20	7 35	11 50	43 00
Iochief	70	3 05	5 80	8 25	13 00	49 00
Iroquois Golden	70	3 20	6 10	8 70	13 75	52 00
Marcross C13.6	70	3 00	5 70	8 10	12 75	48 00
Narrow Grain Evergreen	70	3 20	6 10	8 70	13 75	52 00
Spancross Improved C3.13	70	3 00	5 70	8 10	12 75	48 00

We supply 30 lbs. and over at the 100-lb. rate. Write for special prices on large quantities

CUCUMBERS

One ounce for 50 hills; 2 pounds per acre in hills,
5 pounds in drills

Ashley. A week earlier and darker than Marketer, this is very highly resistant to downy mildew. The 8 to 9 inch, white spined, very dark black-green fruits taper slightly at the stem end. The vines are vigorous and highly productive.

Marketer. In about 65 days the very vigorous prolific vines yield a heavy crop of uniform fruits, about 8 by 2¼ inches and slightly tapered at each end. They have the darkest green color of any variety extending right down to the blossom end. Any fruits missed at one picking are still good at the next.

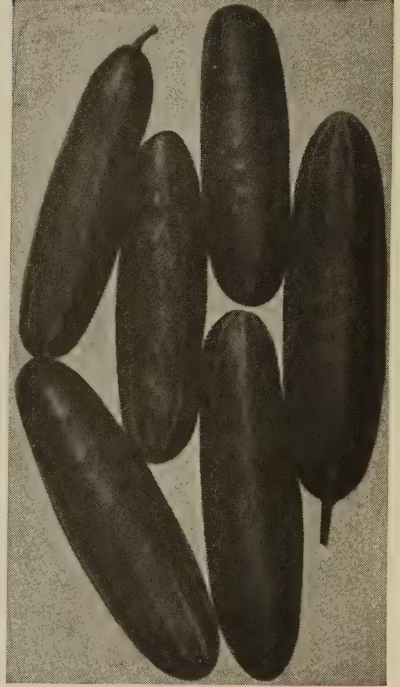
Cubit. A prolific, white-spined main crop variety with cylindrical, blunt-ended, smooth, dark green 10-inch fruits with small seed cavity, maturing in about 60 days.

Colorado. Very dark green white spine with 9 by 2½ inch slightly tapered fruits. The vigorous vines fruit in 68 days.

Hybrid Early Surecrop. This new F₁ hybrid has huge yields of slender, blunt-ended fruits 8 or 9 by 2½ inches in 58 to 60 days, and the very dark green holds well. The hybrid vigor prolongs the large leaf protection as it resists mosaic and mildew.

Niagara. The large vigorous vines are resistant to mosaic and survive and yield where others fail. The nearly cylindrical, 8 to 9-inch fruits are deep green all over.

Producer Pickling. A white-spined variety maturing in 54 days. The fruits at pickling size, up to 5 inches long, hold the very dark green well.



Marketer Cucumber

DANDELION

One ounce will sow 200 feet of row

Thick-Leaf. Is unsurpassed in thickness of leaf and deep green color. It grows compactly, forming a regular upright tuft, and making an abundant crop without using much ground. The plants blanch readily.

Italian (*Ciccoria catalogna*). It produces one main stalk which, when cut off, causes the plant to branch into numerous sprouts. These may be cut several times through the season and sold in bunches profitably.

CUCUMBERS	Oz.	¼lb.	Lb.	5 lbs.	10 lbs.	25 lbs.	100 lbs.	
Ashley (Mldew resistant)	\$0 35	\$1 00	\$3 00	\$14 50	\$28 00	\$67 50	\$265 00	
Colorado and A&C	0 20	0 70	2 25	10 75	20 50	48 75	190 00	
Cubit	30	85	2 50	12 00	23 00	55 00	215 00	
Hybrid Early Surecrop								
¼oz. \$1.20	3 65	10 85	38 00					
Marketer	30	85	2 50	12 00	23 00	55 00	215 00	
Niagara	40	1 20	3 50	17 00	33 00	80 00	315 00	
Producer Pickling	35	1 00	3 00	14 50	28 00	67 50	265 00	
DANDELION				¼oz.	Oz.	¼lb.	Lb.	5 lbs.
Italian (<i>Ciccoria catalogna</i>)				\$0 20	\$0 55	\$1 70	\$5 00	\$22 50
Thick-Leaf				45	1 35	4 00	12 00	55 00

DILL. See under Herbs on opposite page.

EGGPLANT

One ounce will produce 1500 plants

Black Beauty. Earliest and best of all large-fruited Eggplants. Sturdy bushes branching freely near the ground. Large dark purplish black fruits, heavy at the base.

Fort Myers Market. Vigorous 32-inch high bushes. Glossy purplish black fruits, 9½ inches long, 6 inches across, neckless, oval.

ENDIVE

One ounce sows 150 feet; 3 pounds sows an acre

Full Heart Batavian (Escarolle). The broad, twisted or waved, thick leaves are slightly paler green but grow more upright. The heart is very full; the midribs are white.

Green Curled Rose-Ribbed. Rosette, 18 inches across, with golden heart and deep bright green curly leaves, underside of midribs pale rose-pink. Stands hot weather.

Mammoth Bordeaux Curled. Attains large size—20 inches across. Center very full and close. Fine for summer and autumn.

KALE

One ounce sows 200 feet; 4 pounds sows an acre

Blue Curled Dwarf Scotch. More hardy and dwarfer than Green Curled. It is very short-stemmed, of spreading habit with finely curled bluish green leaves.

Green Curled Dwarf Scotch. Winters over where temperature does not drop below zero. It is low-growing, rarely exceeding 14 inches, with finely curled, spreading, bright green, long leaves which keep well.

Siberian. Very vigorous, hardy, of dwarf spreading habit, with bluish green flat-centered leaves, coarsely curled and crumpled at the edges. Winters over.

HERBS

Feet of row per ounce shown below

Basil, Sweet, Large-leaved. (150 ft.) Branching, 1-foot hardy annual for flavoring.

Dill, Mammoth. (100 ft.) Hardy, 2½-foot annual. Sow thickly in very early spring, pull by roots and bunch in June.

Fennel XXX (Finocchio). (75 ft.) Large bulb-like base having very little tendency to split. This is an extra fine strain and is preferred by all of our Italian-American market gardeners. The leaf-stalks are branching with dense fine feathery aromatic foliage.

Marjoram, Sweet. (150 ft.) Leaves and stems used for flavoring. Height 2 ft.

Sage, Broad-Leaf. (100 ft.) Gray-leaved, 1½-foot plant for seasoning.

Savory, Summer. (150 ft.) Slender, branching, 10-inch plant for flavoring.

Thyme, Broad-Leaf. (100 ft.) An aromatic, 10-inch plant for seasoning.

KOHLRABI

One ounce will sow 200 feet; 4 pounds an acre

White Vienna, Short Leaf. Very early, having few leaves. Mild-flavored, smooth white bulbs of medium size and fine quality, ready 75 days after sowing. A fine forcing sort and can be planted closely. The bulbs are best when about 2 inches in diameter.

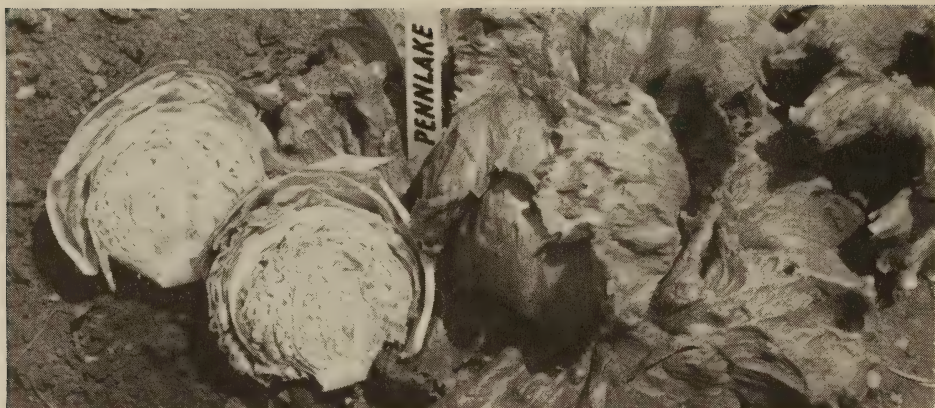
LEEK

One ounce will sow 100 feet; 4 pounds an acre

Elephant. Huge, 12-inch pearl white stalks, 2½ inches thick; tender and mild. Best for winter crop; trenches well.

Giant Italian. Very hardy, long keeper, good for winter or fall crop. Stem 10 to 12 inches long, and often 2½ inches thick. The leaves are dark green. Trenches well.

	¼oz.	Oz.	¼lb.	Lb.	10 lbs.
EGGPLANT					
Black Beauty.....	\$0 30	\$0 90	\$2 65	\$8 00	\$75 00
Fort Myers Market.....	30	90	2 65	8 00	75 00
ENDIVE. Full Heart Batavian (Escarolle).....		25	85	2 50	22 50
Green Curled Rose-Ribbed.....		25	85	2 50	22 50
Mammoth Bordeaux Curled.....		25	85	2 50	22 50
HERBS. Basil, Sweet (Large-leaved).....	20	55	1 70	5 00	45 00
Dill, Mammoth.....	100 lbs. \$90..	15	40	1 25	11 00
Fennel XXX (Finocchio).....	15	40	1 20	3 50	32 50
Marjoram, Sweet.....	25	70	2 00	6 00	57 50
Sage, Broad-Leaf.....	25	70	2 00	6 00	57 50
Savory, Summer.....	20	55	1 70	4 50	40 00
Thyme, Broad-Leaf.....	45	1 35	4 00	12 00	115 00
KALE. Blue Curled Dwarf Scotch.....		25	75	2 25	21 00
Green Curled Dwarf Scotch.....		25	75	2 25	21 00
Siberian or Imperial.....		25	60	1 75	16 00
KOHLRABI. White Vienna, Short Leaf.....	20	45	1 35	4 00	38 00
LEEK					
Elephant.....	25	65	1 85	5 50	53 00
Giant Italian.....	25	65	1 85	5 50	53 00



Pennlake Lettuce

HEAD LETTUCE

One ounce for 2500 plants; 2 pounds per acre

Bibb. Small, dark green, smooth, tender heads; cream-yellow hearts in 57 days.

Great Lakes XXX. Greatly improved and well worth the slightly higher seed cost as the crop cuts heavier having a much greater number of No. 1 heads.

Great Lakes 659. Plants and heads are smaller than XXX strain but 4 days earlier. Lead edges more frilled.

Midas. Like White Boston, a larger frame, slower to bolt and burn, later to mature with thicker deeply savoyed leaves. For cold frames for early spring field planting.

Pennlake. This forms hard, crisp heads, earlier than No. 456 and of better quality. Not quite as large as Great Lakes, they are even, compact, with smooth, dark green leaves and less prominent ribs. Maturing all at one time, they cut a very high percentage. Unequaled for upland crop.

We offer, of the various Lettuce types those we deem best of the many strains available.

White Boston N. J. Special. A pale green-leaved Boston type. Dependable for growing in coldframes, for first field-planting in the early spring, and for fall crop.

Imperial (Cornell) No. 456. Heavily serrated, mid-green heads of medium size, firm and hard during hot weather and resistant to tip-burn. Excellent for early and main crop, on upland and muck soils.

LOOSE-LEAF LETTUCE

Black-Seeded Simpson. Early, large, broad, frilled, light green, crisp, smooth leaves.

Grand Rapids. Very hardy, upright plants of loose, pale green leaves, savoyed and crimped.

Grand Rapids Greenhouse Strain. (Tip-Burn Resistant.) Upright compact light green clusters with heavy frilled edges.

Slo Bolt. Very slow to bolt to seed, the upright light green clusters are heavily frilled.

ROMAINE LETTUCE

Parris Island Cos. A dark green, sure-heading, slow bolting, mosaic resistant cos with less tip-burn. Upright, cylindrical, even heads, slightly crumpled.

Trianon Cos. Compact, upright 12-inch blunt solid heads. The long, spoon-shaped light green leaves are crimped, broad ribbed and crisp, the inner leaves blanched.

LETTUCE, HEAD	1/4oz.	Oz.	1/4lb.	Lb.	5 lbs.	10 lbs.
Bibb.....	\$0 15	\$0 45	\$1 35	\$4 00	\$19 25	\$37 50
Great Lakes XXX.....	25	75	2 20	6 50	31 75	62 50
Great Lakes 659.....	25	75	2 20	6 50	31 75	62 50
Imperial (Cornell) No. 456.....	25	75	2 10	6 25	30 50	60 00
Midas.....	15	35	1 00	3 00	14 25	27 50
Pennlake.....	25	75	2 10	6 25	30 50	60 00
White Boston New Jersey Special.....		25	85	2 50	11 75	22 50
LOOSE-LEAF Grand Rapids.....		25	85	2 50	11 75	22 50
Grand Rapids Greenhouse Strain.....		25	85	2 50	11 75	22 50
Simpson, Black-Seeded.....		25	85	2 50	11 75	22 50
Slo Bolt.....	25	70	2 00	6 00	29 25	57 50
ROMAINE, Trianon Cos.....		25	85	2 50	11 75	22 50
Parris Island Cos.....	15	45	1 35	4 00	19 25	37 50

MUSKMELON

One oz. will plant 50 hills; 2 to 3 lbs. an acre

Delicious No. 51. Vigorous vines, huge yields, in 83 days, of oval-round, creamy yellow 5½ pound melons, 7 by 6 inches. They are well netted and moderately ribbed with thick salmon flesh of extra sweet flavor. Early like the original Delicious but No. 51 is highly resistant to fusarium wilt.

Iroquois. Fine new fusarium wilt resistant medium-sized Bender. The round-oval fruits with yellow-green tough rinds are prominently ribbed and well netted. The thick deep orange flesh is very sweet. The vigorous prolific vines yield heavily in 90 days and do well till frost.

Pride of Wisconsin. Oval-round, 7 by 6½ inch, heavily netted yellow-gray melons with only faint ribbing. The deep orange flesh is sweet and very thick.

Schoon's Hard Shell. An early gray-green shipper with large, slightly oblong, coarsely netted, distinctly ribbed melons weighing from 5 to 8 pounds. The flesh is bright salmon and of very fine flavor. The rind is tough and hard.

Golden Delight. Oval, blue-gray, heavily netted, 7 x 7½-inch melon; very thick orange flesh of fine flavor for local sale.

Hearts of Gold XXX. This *de luxe* strain has heavily netted oval melons, 5¾ inches across, with a tough, thin rind. The very thick golden yellow flesh leaves a small seed-cavity, and the delicious flavor is hard to beat. Resists drought and ships well. Matures in about 90 days.

Honey Rock. The deep orange flesh is luscious and sweet. Melons are oval-round, without ribs, 5 by 6 inches, with heavy, coarse netting, light gray-green, turning to light golden when ripe. The hard shell stands distant shipping well. The vines are quite productive and ripen the attractive melons in about 85 days.



Delicious Muskmelons

MANGEL

One ounce sows 50 feet; 7 pounds an acre

Mammoth Long Red. The light red root, 18 inches long, 6 inches across, with a heavy shoulder, grows half above ground, pulls easily. The roots keep well all winter.

MUSTARD

One oz., 100 ft.; drilled acre, 1 lb., broadcast, 2

Fordhook Fancy, Long-Standing. Long, dark green, curled, deeply cut, flavored leaves which curve outward. Is a strong grower and stands long without bolting.

Green Wave. A.A., '57. Longest to stand, slowest to bolt of all, with deeply and thickly frilled, dark green leaves. Resists heat.

Southern Giant Curled, Long Standing. The large, light green leaves are beautifully curled and fringed at the edges.

	Oz.	¼lb.	Lb.	5 lbs.	10 lbs.	25 lbs.
MANGEL						
Mammoth Long Red.....	\$0 15	\$0 35	\$1 00	\$4 75	\$9 00	\$21 25
MUSKMELONS						
Delicious No. 51.....	¼oz. 15c...	40	1 20	3 50	17 00	32 50
Golden Delight.....	¼oz. 15c...	25	65	2 00	9 50	17 50
Hearts of Gold XXX Strain.....	¼oz. 15c...	35	1 00	3 00	14 50	27 50
Honey Rock or Sugar Rock.....	¼oz. 15c...	40	1 20	3 50	17 00	32 50
Iroquois.....	¼oz. 15c...	45	1 35	4 00	19 00	36 00
Pride of Wisconsin.....	¼oz. 15c...	40	1 20	3 50	17 00	32 50
Schoon's Hard Shell.....	¼oz. 15c...	40	1 20	3 50	17 00	32 50
MUSTARD						
Fordhook Fancy, Long-Standing.....	15	40	1 25	6 00	11 00	25 00
Green Wave.....	20	50	1 50	7 25	13 50	31 25
Southern Giant Curled, Long-Standing.....	15	40	1 25	6 00	11 00	25 00

WHITE ONIONS

One ounce will sow 100 feet; 5 pounds an acre

Prosperity. This green bunch Onion forms no bulbs; the lower 5 inches, $\frac{1}{2}$ to $\frac{3}{4}$ inch through, is white and mild. Sow August 1 to 15 for wintering over. Very hardy and keeps nicely. Sow in early spring, or in late May or early June for late summer market when bunch Onions are scarce. If irrigated will keep green all summer.

Southport White Globe. Use young plants for bunching. If left will form the finest white, dry Onions. A good shipper and keeper. True globe shape, full at base and shoulder.

White Bunch. The earliest for bunching only as it forms late, flat, pearl-white bulbs which do not keep well.

White Portugal. Fine for pickling, for white sets, or for bunching when young. Mature bulbs are of medium size flattened globe with silver-white skin and mild flavor. The mature bulbs are good keepers. This is excellent for summer and early fall use.

White Sweet Spanish. Small necked, deep globe-shaped, firm Onions of rapid, vigorous growth. The largest and mildest white variety. For mature Onions and bunched for "boilers."



Brigham Yellow Globe Onions

YELLOW ONIONS

Brigham Yellow Globe. Big solid globes with tight thick golden skins; perfect for storage. Heavy yields on muck and exceedingly popular for upland soils. The Onions ripen down very evenly. Matures in 110 days.

Yellow Sweet Spanish. A fine, large, golden yellow, globe, very mild uniform, Onion. Early spring-sown seed will produce bulbs weighing a pound each. They ship well.

Early Yellow Globe. Matures in 100 days, 10 days before Brigham Yellow. Yields huge crops, on both muck and upland, of nearly globular, tough skinned, golden yellow solid Onions. It handles and stores unusually well for such an early variety.

Southport Yellow Globe. A fine large, full-shouldered globe. Ripens down evenly. Good keeper and shipper. Very hardy.

OKRA

One ounce will sow 50 feet; 8 pounds an acre

Clemson Spineless. The $4\frac{1}{2}$ -foot plants, with less foliage than Perkins, bear green, angular, ridged, 6-inch spineless pods.

Perkins' Mammoth Pod. Bright green, ribbed, 7-inch, smooth slim pods mature early and freely on 3-foot plants.

PARSNIP

One ounce will sow 150 feet; 4 pounds an acre

Hollow-Crown XXX. The creamy white roots are uniform, heavy at the shoulder, nicely tapered, about 9 inches long, with practically no side roots or prongs. They have deep-set, clean hollow crowns and look attractive for market.

OKRA	$\frac{1}{4}$ oz.	Oz.	$\frac{1}{4}$ lb.	Lb.	5 lbs.	10 lbs.	25 lbs.@
Clemson Spineless.....		\$0 15	\$0 35	\$1 10	\$5 00	\$9 00	\$0 85
Perkins' Mammoth Pod.....		15	35	1 10	5 00	9 00	85
ONIONS							
WHITE. Japanese Bunching.....	\$0 20	50	1 50	4 50	22 00	42 50	4 10
Prosperity.....	20	50	1 50	4 50	22 00	42 50	4 10
Southport White Globe.....	35	65	1 85	5 50	27 00	52 50	5 10
White Bunch.....	20	50	1 45	4 25	20 75	40 00	3 85
White Portugal.....	20	50	1 45	4 25	20 75	40 00	3 85
White Sweet Spanish.....	25	75	2 20	6 50	32 00	62 50	6 10
YELLOW. Brigham Yel. Globe...	20	50	1 50	4 50	21 25	40 00	4 00
Early Yellow Globe.....	20	50	1 50	4 50	21 25	40 00	4 00
Southport Yellow Globe.....	20	50	1 50	4 50	21 25	40 00	4 00
Yellow Sweet Spanish.....	25	70	2 10	6 25	30 75	60 00	5 85
PARSNIP Hollow-Crown XXX...		20	50	1 50	7 00	12 50	1 10
Smooth White.....		25	65	1 75	8 25	15 00	1 35

Write for special prices on large quantities

PARSLEY

One ounce will sow 150 feet of row

Hamburg, Long. Fine strain with parsnip-shaped, smooth white roots, 8 inches long.

Italian or Plain, Special. Pungent flat, deeply cut but not curled, dark green leaves.

Paramount. The dark green foliage is very tightly curled and free from plain leaves. Plants are uniformly about 1 foot high.

Selected Extra-Double Curled. This excellent strain is very vigorous, growing short, stiff stems, with compact, finely cut, very densely curled leaves which retain the extremely dark green color for a long time. Try this *de luxe* strain.

If you grow Lettuce try Parris Island Cos. It's better than Dark Green Cos.



Selected
Extra-Double
Curled Parsley

PEAS

One to 2 pounds will plant 100 feet of row; 120 pounds will plant an acre

World's Record. Earliest large-pod, maturing in 57 days, often before the aphid lice come. The medium-green, 2½-foot wilt-resistant vines bear dark green pods, 3½ to 4 inches long, fairly broad, and pointed, with 7 large, dark green Peas.

Freezonian. Resembles but is better than Thomas Laxton with huskier, 3-foot deep green vines and greater, wilt-resistant yields. The dark green, blunt pods, 3 to 3½ inches long in 62 days are more uniform with very few small pods.

Greater Progress. A much improved Laxton Progress with a heavier yield of well-filled, uniform, deep green, 4 to 4½ inch pointed pods in 62 days. The 18-inch husky vines are loaded with handsome pods maturing over a very short period.

Little Marvel. A dwarf, early, very prolific 63-day variety. Vines 18 inches tall, bear a remarkably large crop of 3½-inch pods filled with sweet, dark green, large Peas. The pods, often in pairs, are straight, deep green, and square ended, and always well-filled regardless of weather.

Giant Stride. The 4½ to 5-inch, dark green, pointed pods are borne heavily on strong, vigorous, 24-inch vines. For main crop and withstands wilt and hot, dry weather. Ready to pick in 72 days.

Laxton's Progress. The 4½-inch deep green pointed pods hold 8 or 9 large dark green Peas of high quality. The 16-inch productive vines mature in 60 days and may be picked clean in a relatively short time.

Telephone, Dark-Pod. The wilt-resistant vines are vigorous, 4 to 5 feet high with large, dark green coarse leaves and produce in 74 days an abundance of dark green pods 4½ to 5 inches long, straight, broad and pointed, filled with 8 large, light green sweet Peas.

PARSLEY

	Oz.	¼lb.	Lb.	5 lbs.	10 lbs.	25 lbs.
Hamburg, Long.....	\$0 20	\$0 65	\$1 90	\$9 25	\$18 00	\$42 50
Italian or Plain Special.....	25	85	2 50	12 25	24 00	57 50
Paramount.....	20	55	1 70	8 25	16 00	37 50
Selected Extra-Double Curled.....	20	55	1 70	8 25	16 00	37 50

PEAS

	Lb.	5 lbs.	10 lbs.	15 lbs.	25 lbs.	60 lbs.	100 lbs.
Freezonian.....	\$0 50	\$1 80	\$3 30	\$4 50	\$7 00	\$16 80	\$28 00
Giant Stride.....	50	1 80	3 30	4 50	7 00	16 80	28 00
Greater Progress.....	50	1 80	3 30	4 50	7 00	16 80	28 00
Laxton's Progress.....	50	1 80	3 30	4 50	7 00	16 80	28 00
Little Marvel.....	50	1 80	3 30	4 50	7 00	16 80	28 00
Telephone, Dark-Pod.....	50	1 80	3 30	4 50	7 00	16 80	28 00
World's Record.....	50	1 80	3 30	4 50	7 00	16 80	28 00

PEPPERS

One ounce will produce 1000 to 1200 plants

California Wonder XXX Strain. This is a remarkable *de luxe* strain. The large, very solid, exceptionally thick-walled, bright green Peppers are blocky in form, square-ended, 4-nosed and often grow as much as 5 inches long by 4 inches across. These are the heaviest we have ever seen, with walls over $\frac{3}{8}$ inch thick. The flesh is crisp, juicy and very mild. The vigorous plants bear a very heavy yield when grown on well-drained lean soils. Avoid using a commercial fertilizer high in nitrates as it tends to make this later and go to foliage rather than fruit.

Jersey Wonder. An outstanding new strain, of the California Wonder type, but maturing a greater yield of Peppers 6 days earlier than that variety. The plants are not as large or strong and the Peppers themselves are a little smaller but the earliness and greater yield more than offset this. Of characteristic California Wonder shape, the deep green fruits turning bright crimson, are blocky and smooth and have just as heavy, thick firm flesh of mild sweet flavor.

Keystone Giant (Mosaic Resistant). The thick-walled fruit is blocky in shape and sets in great numbers about even in time with Yolo Wonder. The sturdy, bushy plants are very highly resistant to mosaic and yield a very dependable crop where mosaic prevails. Produces a very high percentage of fancy quality fruit.

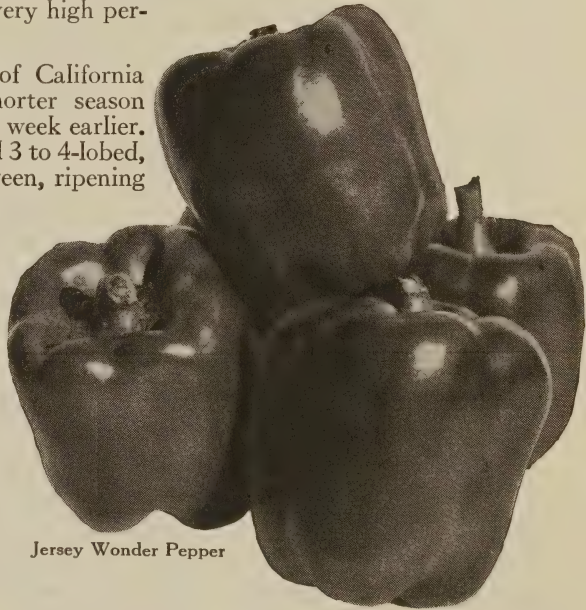
Calwonder. A uniform strain of California Wonder, specially fine in shorter season localities as it matures about a week earlier. The sturdy plants heavily yield 3 to 4-lobed, upright smooth fruits, deep green, ripening bright crimson. The flesh is thick and solid and of mild flavor. Calwonder packs well because the fruits are so uniform in size and shape.

Worldbeater, Rutgers No. 13. A large Pepper, 5 inches long by $3\frac{1}{2}$ inches across, maturing medium-early. A vigorous grower, sure cropper, and produces a very large crop. The fruit is a rich scarlet; flesh exceedingly mild, very thick, and very firm.

Worldbeater, Rutgers No. 13. Mother Strain. None better.

Talianelle. An upright-growing, thin-skinned, smooth, shiny yellow-green Pepper about 5 inches long and 2 inches across at the stem and, tapering to a blunt point. The very prolific dwarf bushes, despite sparse foliage are literally covered with Sweet Peppers turning red at maturity. Called the Italian frying Pepper.

Large Hot Red Cherry. A select strain with vigorous, prolific upright plants. The fruits are round, $1\frac{1}{4}$ inches in diameter smooth, solid and very hot and pungent. They change in color from deep green to deep scarlet and are popular for use in pickles.



Jersey Wonder Pepper

Oshkosh. Deep glossy green, smooth, thick-fleshed fruits without lobes, $4\frac{1}{2}$ inches long by $3\frac{1}{2}$ inches across, tapering to an abrupt blunt point and maturing bright canary yellow. The vigorous plants bear a heavy yield of mild sweet Peppers which are fine if marketed before they mature.

Hungarian. Earliest and hottest of this type. The waxy bright yellow, tapering, slightly twisted, 6 to 7-inch Peppers are produced, part pendant and part upright, in great numbers on branching plants. The color turns to orange and then to bright red.

For prices of the above and other varieties, see opposite page

PEPPERS, continued

Illinois F-5. This new very heavy yielding variety bears continuously even through the hottest weather. The fruits, like Worldbeater in shape are 3 or 4-lobed, 3½ inches wide and 5¼ inches long. They have a fine crimson-red color, medium thick walls and about 45 will fill a bushel. It matures in 60 days from setting plants.

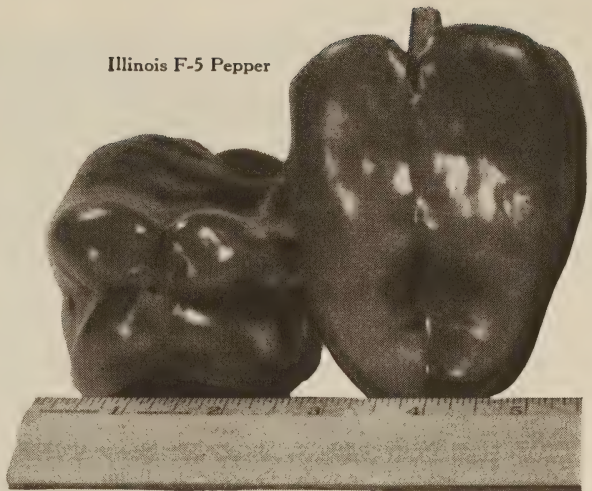
Burlington. A mosaic-resistant. The fruits are 3½ to 4 inches long, slightly tapering to a tip 2½ inches wide, shiny dark green turning brilliant scarlet. The flesh is very thick and mild. It is a heavy yielder maturing in 72 days from setting out plants.

Yolo Wonder. Here's a new California Wonder type pepper that resists tobacco mosaic. A little later but yields blocky, 4½ by 3¾ inch, squatty fruits of a nice green color over a long period. Denser foliaged, compact plants permit closer planting than others.

Long Red Cayenne. The large plants are very prolific producing many deep green, tapered fruits, 5 inches long and ½ inch across. These turn bright red and are very hot and pungent. Long Red Cayenne is used for pickles, canning and drying.

Sunnybrook. The deep scarlet Peppers are somewhat like a flattened tomato, 3 inches across and 2 inches deep, and come in clusters of 4 or 5 on sturdy, compact, 18-inch, heavily laden plants. The thick flesh is mild and sweet. Matures in 75 days.

Illinois F-5 Pepper



PUMPKINS

One ounce will plant 25 hills;
4 pounds will plant an acre

Connecticut Field. Smooth, deep orange fruits commonly 10 inches long and 12 inches across weighing 20 pounds. Flesh is deep yellow, and fine-grained.

Jack o'Lantern. The best for Hallowe'en with smooth, round, orange fruits, 9 in. deep and 8 in. across in 110 days. They are fine eating.

Large Cheese. Large, flattened-round, 15 inches across mottled, light green and yellow, changing to creamy buff. The thick flesh is deep yellow.

Small Sugar. Small, orange Pumpkins, flattened-round, 10-in. diameter, with thick, sweet, deep yellow, fine-grained flesh in 115 days. Best for pies.

PEPPERS

	¼oz.	Oz.	¼lb.	Lb.	5 lbs.
Burlington	\$0 30	\$0 80	\$2 35	\$7 00	\$33 75
California Wonder XXX Strain	30	90	2 65	8 00	38 75
Calwonder	30	90	2 65	8 00	38 75
Half Long Hot	30	90	2 65	8 00	38 75
Hungarian	35	1 00	3 00	9 00	42 50
Illinois F-5 (All big)	45	1 35	4 00	12 00	55 00
Jersey Wonder	35	1 00	3 00	9 00	42 50
Keystone Giant (Mosaic Resistant)	40	1 10	3 25	9 75	46 25
Large Hot Red Cherry	30	90	2 65	8 00	38 75
Long Red Cayenne	30	90	2 65	8 00	38 75
Oshkosh	30	90	2 65	8 00	38 75
Sunnybrook	35	1 00	3 00	9 00	43 75
Talianelle	20	55	1 70	5 00	23 75
Worldbeater, Rutgers No. 13	30	90	2 65	8 00	38 75
Worldbeater, Rutgers No. 13 Mother Strain	2 00	5 00	18 00	60 00	
Yolo Wonder	30	90	2 65	8 00	38 75

PUMPKIN. Connecticut Field

Jack o'Lantern (Hallowe'en)	20	70	2 25	10 75
Large Cheese	30	90	2 75	13 25
Small Sugar	20	70	2 25	10 75
	20	55	1 60	7 50

We offer three distinct strains of Scarlet Globe Radish. Please specify which strain you want when ordering



One ounce will sow 100 feet of row; 10 pounds will sow an acre in drills, 12 pounds if broadcast

Forbes Strain
Scarlet Globe
Radishes

RADISHES

- Cherry Belle.** Very short-topped, uniformly deep scarlet, round roots with fine tap-roots and crisp, mild flesh. Highly recommended for greenhouse forcing, for frames, and also very fine as a summer crop on irrigated upland and muck. It has not proven good for outdoor crops in early spring or late fall, as the tops are too short when grown in cool temperatures. Stands well without growing pithy.
- Comet.** This is particularly suited for outdoor summer crops as it remains crisp and hard for a long while. The Radishes are large with small tap-roots, uniformly round and have a clean scarlet color. The white flesh is crisp and of fine flavor. The main advantages of Comet are its larger size and in warm weather it will remain hard and crisp long after other varieties have become soft and pithy.
- Scarlet Globe.** This really fine outdoor strain excels others because it is produced from transplanted roots selected for uniformity. The brilliant scarlet, smooth roots have tops just right for bunching. In about 3 weeks you'll have attractive, solid, crisp, uniform roots that will catch any buyer's eye.
- Scarlet Globe, Short-Top XXX Strain.** This very excellent strain meets the particular requirements of the most critical greenhouse and muck-soil growers. It is produced from carefully selected, transplanted roots and, in the opinion of the most experienced large growers, is close to perfection. The brilliant scarlet, clean Radishes are very crisp and solid, and extremely uniform in size and shape. Tops are ideal. Matures 4 days before other strains, even outdoors.
- Iceicle.** Attractive waxy white, long roots, gradually tapering down from the shoulder which is $\frac{3}{8}$ inch in diameter. The roots are usually 5 to 6 inches long and have nice bunching tops. This is the earliest of the long-rooted early summer white sorts. Our strain excels all others we have observed. The crisp-as-ice roots are remarkably uniform and perfectly shaped. Matures in 27 days.

For prices of the above and other varieties, see opposite page

RADISHES, continued

Champion. All America, 1957. True ball shaped, thin tap-rooted, clear, shiny bright scarlet radishes the size of a silver dollar. Keeps solid and hard a long time. A king size Cherry Belle.

White Strasburg. Elongated turnip roots, 6 by 2 inches, thick shouldered and tapering, in 40 days. Mildly pungent.

WINTER RADISH

Round Black Spanish. Gray-black, round, slightly top-shape roots, 4 inches across and 3 deep. White, pungent flesh.

RUTABAGA

One oz. sows 200 feet; 1 lb. per acre in drills, 2 if broadcast

Neckless XXX. A medium topped early strain with uniform, large clean yellow, purple-topped, globe-shaped roots with very small necks. The flesh is light yellow and very firm. This is an extra select strain. Matures in 85 days.

SALSIFY

One ounce will sow 50 feet of row; 8 pounds will sow an acre

Mammoth Sandwich Island. Large and strong-growing, with long, white, tapering roots with but few side roots. It is nicely uniform and keeps very well.

SWISS CHARD

1/4 lb. sows 250 feet; 7 lbs. will plant an acre

Dark Green, White Rib. Leaves are slightly crumpled and dark glossy green. The stems and midribs are clear white, broad and quite thick.

Fordhook Giant. The very dark green, glossy, heavily crumpled leaves are erect on 3-inch, broad, overlapping, greenish white leaf-stems. The full-grown leaves reach a size of 2 1/2 feet long and 10 inches wide.



Salsify, Mammoth Sandwich Island

RADISH, EARLY ROUND	1/4 lb.	Lb.	5 lbs.	10 lbs.	25 lbs.	100 lbs.
Cavalier.....	\$0 35	\$1 10	\$5 25	\$10 00	\$22 50	\$90 00
Champion.....	50	1 50	7 00	13 00	30 00	110 00
Cherry Belle.....	40	1 25	5 75	11 00	26 25	100 00
Comet.....	40	1 25	6 00	12 00	28 75	100 00
Scarlet Globe.....	35	1 10	4 75	9 00	20 00	75 00
Scarlet Globe, Short-Top XXX.....	35	1 10	5 25	10 00	22 50	90 00
Scarlet Globe, No. 494.....	40	1 25	6 00	12 00	28 75	100 00
LONG, Icicle.....	40	1 25	5 75	10 50	23 75	90 00
Icicle Short-Top Muck Strain.....	40	1 25	5 75	10 50	23 75	90 00
SUMMER. White Strasburg.....	35	1 00	4 50	8 00		
WINTER.						
Rose China Winter.....	30	1 00	4 50	8 00		
Round Black Spanish.....	40	1 25	5 75	10 50	23 75	
RUTABAGA. Neckless XXX. Oz. 20c..	50	1 50	7 00	13 00	31 25	
SALSIFY	1/4 oz.	Oz.	1/4 lb.	Lb.	5 lbs.	10 lbs.
Mammoth Sandwich Island.....	\$0 15	\$0 45	\$1 30	\$3 75	\$18 50	\$36 50
SWISS CHARD						
Dark Green, White Rib. 25 lbs. \$37.50..		25	60	1 75	8 50	16 00
Fordhook Giant..... 25 lbs. \$37.50..		25	60	1 75	8 50	16 00

WINTER SQUASH

1/4 lb. for 50 hills; 4 pounds per acre

Blue Hubbard, Special New England Strain.

An improved strain with more vigorous disease-resisting vines and much heavier, gray-blue fruits. They have large, elongated, rounded ends, much thicker flesh, give more tonnage per acre and store better. 105 days.

Butternut. The light tan, smooth, straight, 10-inch fruits have solid necks and enlarged blossom ends with small seed cavity. The flesh is yellow, dry, and sweet. They mature from August to frost on very prolific vines and store very well. This is a profitable crop. 100 days.

Green Delicious. A hard to beat, strong-vined variety with broad, top-shaped fruit, 8 inches long with fairly smooth, very dark green skin and thin, hard rind. The extra thick, orange flesh is dry, and sweet. 103 days.

Mammoth Des Moines. This is a very select strain of the larger Des Moines or Acorn type squash. The vigorous running vines are heavily productive and laden with black-green, hard shelled pointed squashes 7 inches long and 5 inches wide. There is a very good demand for these and they keep unusually well. The flesh is yellow, dry, mealy and excellent when baked. 90 days.

Boston Marrow Special. Large, irregularly oval fruits, about 9 by 14 inches, weighing 6 to 9 pounds, with a hard orange shell. The thick flesh is deep orange, fine-grained and fine for pies. The vines will mature Squashes in 95 days.

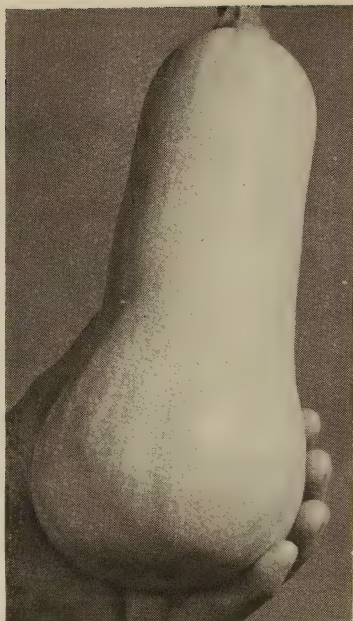
Buttercup. Gray striped and spotted dark green flattened fruits, turbaned at blossom end, 4 1/2 by 6 1/2 inches, weighing 3 1/2 pounds freely produced on vigorous vines. Flesh is very dry and sweet. 100 days.

Des Moines. Vigorous, running vines, laden with black-green, acorn hard shelled fruits, 5 by 4 inches which store unusually well. The flesh is rich yellow, dry, mealy and delicious when baked. 80 days.

Golden Delicious. Top-shaped fruits, 11 by 8 inches, come on vigorous vines. The skin is reddish orange, thin and hard. The thick orange flesh is sweet, fine-grained and moderately dry making it fine for freezing. 103 days.

Golden Hubbard. The typical Hubbard vine and shape, moderately warted, about 8 by 11 inches, with deep orange-red skin striped with cream. Flesh is orange-yellow, fine-grained and sweet. 105 days.

Warted Hubbard XXX. A select strain with large, extra heavily warted, hard, dark green round fruits with elongated ends. Dry orange-yellow flesh. Vines give a huge yield, keeps well. 110 days.



Butternut Squash

SUMMER SQUASH

1/4 lb. for 80 hills; 3 pounds per acre

Caserta. The prolific, vigorous bushes, in 58 days give a huge yield of fine, very early Squashes. They are of a blunt Coccozelle shape, light glossy green with dark green broken stripes, and finest when small. Of extra quality and appearance.

Coccozelle Long XXX. Cylindrical, straight, smooth Squashes, dark green with lighter stripes, mature in 65 days. Use when 6 to 8 inches long. Strong bushes.

Early Prolific Straightneck. The compact bushes provide a heavy, early yield of smooth, straight, creamy yellow fruits, usable when 6 inches long. 50 days.

White Bush Scalloped (Patty Pan). The vigorous bushes bear heavy yields of clean cream-white, round, flat fruits with scalloped edges. They mature in 50 days. The white flesh is moist and has nice flavor and is particularly fine if harvested when young.

Zucchini, Dark Green. Smooth, long slender, very slightly fluted, black-green Squashes. Best when 5 to 6 inches long; then they are unusually tender. Flesh is greenish white. Strong bushes; mature in 65 days.

Zucchini, Gray. These are straight, very nearly cylindrical and the smooth surface is mottled with light and dark green, giving a gray appearance. The flesh is very firm. Vigorous bushes. 65 days.

SPINACH

One ounce for 100 feet; 15 lbs. per acre
in rows, 25 lbs. if broadcast

America. All-America Silver Medal, 1952. The darkest green and stands longest of all. Larger and ready a week later than Long Standing but stands 10 days longer. The heavily crumpled-leaved plants are 6 to 8 inches high and 10 to 12 across. Stands hot weather very well. Try it.

Dark Green Bloomsdale Savoy. Best for fall, but if sown very early in the spring will produce a good crop. This early variety produces large, glossy, very dark green, crumpled, thick leaves.

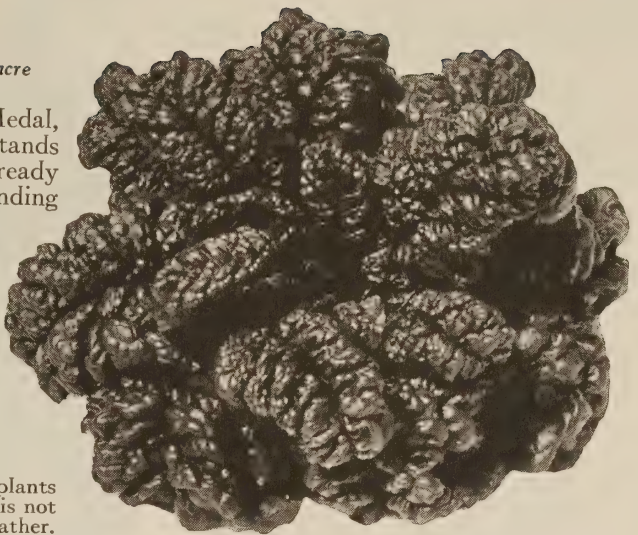
New Zealand. Large, spreading plants with small, pointed leaves. This is not a true Spinach. Thrives in hot weather.

Long-Standing Savoy. It will stand in marketable condition 10 to 14 days longer before bolting than regular Savoy and is darker green. The inferior early shooting male plants are entirely lacking. It is intensely crumpled and blistered and very uniform. Our strain is extra fine.

Old Dominion. A long-standing strain of Virginia Blight-resistant that is best adapted for late fall or wintered-over crops, and will withstand "yellows." The leaves are well crumpled and of a dark blue-green color. It is a heavy yielder.

Special Summer Savoy. Excellent, uniform strain, out of Long-standing Savoy, with darker green, heavily crumpled, savoyed plants which stand 3 to 4 days longer without bolting. Holds crumple in heat.

Virginia Blight-Resistant Savoy. Bred for blight-resisting vigor under actual blight conditions where ordinary strains of seed fail. Best suited for fall crop, as it bolts to seed quickly in warm weather.



Spinach, Long-Standing Savoy

SPINACH. All, except N. Z., 1/4lb. 20c. Lb.	5 lbs.	10 lbs.	25 lbs.	50 lbs.	100 lbs.	
America (All-America for 1952).....	\$0 60	\$2 70	\$5 10	\$12 00	\$23 00	\$44 00
Dark Green Bloomsdale Savoy.....	55	2 25	4 20	9 75	18 50	35 00
Long-Standing Savoy.....	55	2 25	4 20	9 75	18 50	35 00
Old Dominion.....	55	2 25	4 20	9 75	18 50	35 00
Special Summer Savoy.....	55	2 25	4 20	9 75	18 50	35 00
Virginia Blight-Resistant Savoy.....	55	2 25	4 20	9 75	18 50	35 00
New Zealand... Oz. 10c., 1/4lb. 30c....	1 00	4 50	8 00	16 25		

SQUASH, SUMMER	Oz.	1/4lb.	Lb.	5 lbs.	10 lbs.
Caserta.....	\$0 30	\$0 90	\$2 75	\$13 25	\$25 50
Cocozelle Long XXX.....	30	90	2 75	13 25	25 50
Early Prolific Straightneck.....	20	70	2 25	10 75	20 00
White Bush Scalloped (Patty Pan).....	20	70	2 25	10 75	20 50
Zucchini, Dark Green.....	25	85	2 50	12 00	23 00
Zucchini, Gray.....	25	85	2 50	12 00	23 00

WINTER	Oz.	1/4lb.	Lb.	5 lbs.	10 lbs.
Blue Hubbard, Special New England Strain....	40	1 20	3 50	17 00	32 50
Boston Marrow Special.....	25	85	2 50	12 00	23 00
Buttercup.....	40	1 20	3 50	17 00	32 50
Butternut..... 1/4oz. 20c....	50	1 55	4 50	21 75	42 00
Des Moines or Acorn or Table Queen.....	25	85	2 50	12 00	23 00
Des Moines, Mammoth or Royal Acorn.....	30	90	2 75	13 25	25 50
Golden Delicious.....	35	1 00	3 00	14 50	28 00
Golden Hubbard.....	30	90	2 75	13 25	25 50
Green Delicious.....	35	1 00	3 00	14 50	28 00
Warted Hubbard XXX.....	35	1 00	3 00	14 50	28 00

TOMATOES

One ounce produces 2000 plants

Rutgers. (Certified Seed.) The heavy yielding, strongly wilt-resistant vines are loaded with scarlet, globe-shaped, solid, heavy fruits, excellent for shipping. They all ripen from the inside out instead of outside in. It excels all for the fine flavor of its juice. The firm fruit holds its fine large size through the entire season. Very fine for main crop particularly if planted on light sandy soil. The large vines are strong growing. The fruit runs very uniform in shape and in size.



Queens Tomato

Rutgers, Mother Strain. An extra *de luxe* strain specially saved from selected mother plants. The much higher seed cost is justified where an extra fancy crop is needed for high class packs or premium markets.

Marglobe. (Certified Seed.) A very desirable midseason variety particularly for rich medium-heavy soils. The heavy foliated vines are vigorous, very productive over a long period and definitely resistant to wilt and rust. The large, uniform, deep scarlet fruits are deeply globe-shaped, smooth and very solid. They are particularly valuable for shipping and canning.

Master Marglobe. (Certified Seed.) For select, fancy markets this is much superior to regular Marglobe. The vines are stronger and more productive with larger, more solid fruit. The heavier yield will please the most critical.

Queens. A new early, *very firm*, road-stand or market Tomato, from Valiant X Rutgers. The uniform plants yield their heavy peak crop a week after Valiant and a week before Rutgers. The smooth, red fruits, astoundingly alike in size and shape, are deep globe-shaped and weigh 5 ounces. Small seed cavities and thick outer and inner walls make them very firm when picked on the blush and even after red ripe.

Queens Mother Strain. An extra deluxe strain saved from selected mother plants. Use this for your fanciest, highest class demand.

Early Jersey. Both vine and fruit are one-fourth larger than Victor, deeper both in shape and red color and maturing 5 days after Victor and 4 days after Valiant. The sturdy, determinate vines freely yield smooth, firm and solid fruits.

Stokesdale, Mother Strain. Saved from selected mother plants, this extra *de luxe* strain produces an extra fine crop. The yield is heavier but more important is the uniformity of the larger fruit so desirable for the critical trade.

Valiant. (Certified Seed.) This exceptionally fine, very early variety matures extra large, solid, round, brilliant red fruits three days after the old Earliana. It is without question the best extra early to grow for early market. The vines are of spreading habit and give a very heavy early yield when grown in a rather heavy soil and well fertilized. Valiant is a much better Tomato for market than Victor.

Valiant Mother Strain. This is saved from specially selected mother plants. The resultant crop will insure that extra premium price for extra fine quality.

For prices on Tomatoes, see page 24

GROW HYBRID TOMATOES

F₁ hybrid vigor yields more perfect fruit and keeps on yielding when adverse conditions spoil other kinds. One oz. of Hybrid seed for \$25 produces 2000-2500 plants. The \$25 is small indeed considering the income from that many plants.

F₁ Hybrid No. 60. Dark red globes, 6 to 7 ozs. each in 60 days from plants. Early heavy yields to frost.

F₁ Hybrid No. 70. Deep round, bright red, solid, 7 to 8 oz. globes in 70 days from plants. Heavy top yield.

F₁ Hybrid No. 80. Huge bright scarlet 10 oz. and up, deep globes. Enormous yields in 80 days from plants.

OTHER STANDARD TOMATOES

Bonny Best. (Certified Seed.) Smooth, medium-sized, flat-round, bright scarlet tomatoes which ripen very evenly.

Break O'Day. Wilt-resistant, heavily productive vines with an early crop of globe-shaped, large scarlet fruits.

Comet. For greenhouse or outdoor trellis medium-sized fruit. The scarlet tomatoes, in large clusters, are smooth and solid.

Dwarf Stone. Dwarf, close jointed, vigorous, erect plants with late, solid red fruits of medium size and flat-round shape.

Golden Jubilee. Fine large, deep round, orange-yellow fruits, mild and acid-free.

Gulf State Market. Open vines of medium height mature in 77 to 80 days smooth, medium large, globular, purplish pink, solid fruits free from cracking.

Italian Red Plum. This is an extra select strain with clusters of bright red, oval fruits, 2½ inches long, in great abundance.

John Baer. An enormous crop of bright red, medium-sized, smooth fruit of flat globe shape for early canning and shipping.

Oxheart. A late productive variety for roadside or local market. Pink fruits are large, solid, heart-shaped, and meaty.

Ponderosa or Beefsteak. Enormous, deep but flat shaped, purplish pink fruits somewhat rough and of mild acid-free flavor.

Pritchard. (Certified Seed.) This second early has medium strong plants quite resistant to wilt and rust. They bear a very heavy crop if planted in good fertile soil. The medium large, globe-shaped bright red fruit, well colored throughout, is very solid with few seed cavities. The quality is extra fine, mild and acid-free.

Sioux. The foliage gives ample protection from the sun. The smooth, solid, mid-red globed fruits, of medium size, are thick walled, meaty and quite free from hard core, blossom scar or radial cracks. They are juicy, mildly acid and mature in about 70 days, nearly as early as Valiant.

Stokesdale. (Certified Seed.) The vines are strong, vigorous but rather open in habit, with medium foliage. They yield a huge second-early crop fine for local market, shipping and canning. The medium-sized, smooth, round fruit is bright scarlet, ripens evenly a week before Marglobe.

Yellow Plum. Small, oval-shaped, bright yellow fruit, in clusters, fine for preserves.

TURNIPS

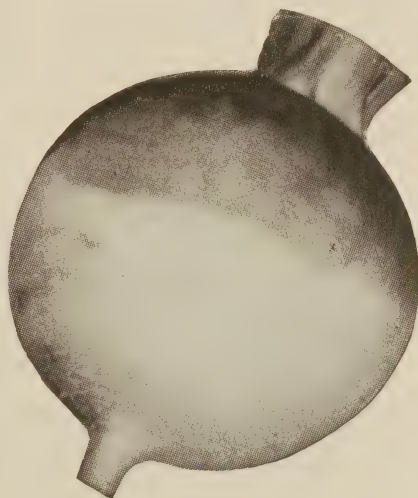
One ounce sows 200 feet; one pound per acre in drills, 2 pounds if broadcast.

Cow Horn. Large, erect, deeply cut leaves with tapered, often crooked, 10 to 15-inch white roots with light green shoulders growing one-third out of ground, in 65 days. Flesh is sweet and tender.

Purple-Top White Globe. An extra select, uniform strain with medium large, compact, cut-leaved, deep green tops and very smooth, 4-inch globe roots, purplish red above and white below ground, in 55 days. The white flesh is crisp and tender.

Yellow Globe Green-Top. Smooth, green-topped, yellow globe roots, 5 inches across in 75 days. The pale yellow flesh is sweet and tender.

For prices of Tomatoes and Turnips see next page



Purple-Top White Globe Turnip

WATERMELONS

One ounce will plant 25 hills; 3 pounds per acre

Congo. In 90 days the oblong, blocky, dark green fruits, faintly striped lighter green, weigh 35 pounds each. Ship well. Bright red sweet flesh.

Dixie Queen. A prolific, 85 day shipping type with oval-round, 15 by 12 inch light green melons striped dark green. Red, crisp sweet flesh.

New Hampshire Midget. Gray-green 8 by 6-inch, for road stand sale.

Rhode Island Red. Early oval 8-12 lb. sweet red-fleshed for the North. Pale green with darker stripes.

Wilt-Resistant Kleckley's Sweets No. 6. Large, cylindrical, dark green with red, crisp, sweet flesh. Ships well. Prolific vines bear melons in 90 days.



Dixie Queen Watermelon

TOMATOES

	Pkt.	1/4oz.	1/2oz.	1/2oz.	Oz.	2 ozs.
Hybrid No. 60, No. 70, or No. 80.....	\$1 35	\$2 25	\$4 00	\$7 50	\$25 00	\$48 00
	Pkt.	1/4oz.	Oz.	1/4lb.	Lb.	5 lbs.
Bonny Best. (Certified.).....	\$0 10	\$0 30	\$0 85	\$2 50	\$7 50	\$35 00
Break O'Day.....	10 40	1 10	3 20	9 50	38 00	45 00
Comet.....	35	1 25	3 50	11 00	38 00	42 50
Dwarf Stone.....	10 35	35	95	2 85	8 50	40 00
Early Jersey.....	25	1 10	3 35	10 00	35 00	
Golden Jubilee.....	10 40	1 10	3 20	9 50	45 00	
Gulf State Market.....	10 35	1 00	3 00	9 00	42 50	
Italian Red Plum.....	15 55	1 65	5 00	15 00	70 00	
John Baer.....	10 30	85	2 50	7 50	35 00	
Marglobe. (Certified.).....	10 30	85	2 50	7 50	35 00	
Master Marglobe. (Certified.).....	10 30	90	2 65	8 00	37 50	
Oxheart.....	15 55	1 65	5 00	15 00		
Ponderosa or Beefsteak.....	10 40	1 10	3 20	9 50	45 00	
Pritchard or Scarlet Topper. (Certified.).....	10 35	95	2 85	8 50	40 00	
Queens.....	10 30	80	2 35	7 00	32 50	
Queens Mother.....	50 2 00	5 00	18 00	60 00		
Rutgers. (Certified.).....	10 30	90	2 65	8 00	37 50	
Rutgers Mother.....	50 2 00	5 00	18 00	60 00		
Sioux.....	10 40	1 10	3 20	9 50	45 00	
Stokesdale. (Certified.).....	10 30	90	2 65	8 00	37 50	
Stokesdale Mother.....	50 2 00	5 00	18 00	60 00		
Trellis No. 22.....	30 1 00	3 00	10 00	35 00		
Valiant. (Certified.).....	10 40	1 10	3 20	9 50	45 00	
Valiant Mother.....	50 2 00	5 00	18 00	60 00		
Yellow Plum.....	10 35	1 00	3 00	9 00		

TURNIPS, YELLOW

	Oz.	1/4lb.	Lb.	5 lbs.	10 lbs.
Yellow Globe Green-Top.....	\$0 15	\$0 35	\$1 00	\$4 75	\$9 00
WHITE. Cow Horn.....	15	35	1 00	4 75	9 00
Purple-Top White Globe..... 25 lbs. \$21.25..	15	35	1 00	4 75	9 00
FOR GREENS. Seven Top.....	15	35	1 00	4 75	9 00

WATERMELON

Congo (Anthracnose-resistant).....	35	1 00	3 00	14 50	28 00
Dixie Queen.....	20	65	2 00	9 50	18 00
New Hampshire Midget..... 1/4oz. 15c..	45	1 35	4 00	18 75	
Rhode Island Red..... 1/4oz. 15c..	35	1 00	3 00	14 50	
Wilt-Resistant Kleckley's Sweets No. 6.....	20	60	1 75	8 25	15 50

FORBES FINE FLOWER SEEDS

at our low prices, will save you money

In any growing effort, the results are really based on the quality of the seeds used. The greatest care and the longest experience are useless if the seeds are not good. It has been our pleasurable task since 1898 to currently determine the relative worth of all available seed strains. Our constant aim is to offer only the finest, and through the years Forbes Flower Seeds have earned an enviable record for consistent high quality. Try them this year.

Seeds of Annual Flowers

Annuals sprout from seed, grow, flower, fruit, and die all within the garden year. They are easily grown from seed.

AGERATUM

Flat-grown plants, ready from seed sown in January and February, sell readily when showing color in the flat. Blue Boy sown in November or December makes fine pot-plants in full bloom for Easter sale.

Blue Boy. This extra-dwarf strain is the result of many years of careful selection. The plants are compact and very uniform, growing about 6 inches high. Its rich deep blue flowers of good size are very freely produced, almost obscuring the neat, deep green foliage. Fine for borders. $\frac{1}{16}$ oz. 45c; $\frac{1}{4}$ oz. \$1.35; oz. \$4; $\frac{1}{4}$ lb. \$12.



Ageratum, Blue Boy

Blue Perfection. Large flower-heads of deep amethyst-blue on 9 to 10-inch plants. Excellent for large beds and for cutting. $\frac{1}{16}$ oz. 35c; $\frac{1}{4}$ oz. 60c; oz. \$1.75; $\frac{1}{4}$ lb. \$5.50.

Midget Blue. This 5-inch strain is dwarfest of all with fine foliage covered with small, true ageratum-blue flowers. Uniformly dwarf. $\frac{1}{16}$ oz. 55c; $\frac{1}{4}$ oz. \$1.65; oz. \$5; $\frac{1}{4}$ lb. \$15.

NEW BLUE MINK (Tetraploid)

Very large, fluffy, powder-blue flowers liberally covering the early-blooming, very uniform, 6-inch plants. Has been given wide publicity and is already in strong demand. $\frac{1}{16}$ oz. 60c; $\frac{1}{4}$ oz. \$1.75; oz. \$7. Try some. Compare it with the other strains.

ALYSSUM

For flat-grown plants, start the seed in March. For *Alyssum saxatile* see Perennial List.

Carpet of Snow. Round, flat plants, 5 inches high and 10 to 12 inches across, with a solid mass of tiny white flowers. $\frac{1}{4}$ oz. 30c; oz. \$1; $\frac{1}{4}$ lb. \$3; lb. \$9.

Royal Carpet. All-America Winner. A very dwarf purple strain which carpets the ground. The neat compact plants, 4 inches high and 10 inches across, are covered with vibrant purple bloom all season. A perfect companion for Carpet of Snow for neat edging. Blooms early in the flat for ready sale. $\frac{1}{16}$ oz. 40c; $\frac{1}{4}$ oz. \$1.20; oz. \$3.50; $\frac{1}{4}$ lb. \$11; lb. \$32.

Snow Cloth. The very finest white variety, and blooms two weeks earlier than any other. The very flat round plants, 12 inches across and 6 inches high, form a compact mass of small pure white flowers. $\frac{1}{4}$ oz. 30c; oz. \$1; $\frac{1}{4}$ lb. \$3; lb. \$9.

Violet Queen (Special Strain). The round plants, 10 inches across and 4 inches high, form mounds of intense bright violet and make a very unusual dwarf edging plant. An ideal subject for flat-grown plants. $\frac{1}{16}$ oz. 40c; $\frac{1}{4}$ oz. \$1.25; oz. \$3.75; $\frac{1}{4}$ lb. \$11.

AMARANTHUS

Molten Fire. The most ornamental of all, with 3-foot plants having dark bronze leaves and perfect poinsettia-red tops. $\frac{1}{8}$ oz. 40c; $\frac{1}{4}$ oz. 65c; oz. \$2.

ARCTOTIS

For flat-grown plants start the seed indoors in March.

Grandis. Bushy, 2 to 3-foot plants with 2-inch daisies with mauve centers and pearl-white petals, reverse tinted lilac. $\frac{1}{4}$ oz. 35c; oz. \$1.

ASPARAGUS

Fine for house decoration or for cutting, and will remain in fresh green condition for a long time.

Sprengeri. A trailing variety, 4 feet long, for hanging-baskets and outdoor summer flower-boxes. 250 seeds 70c; 1000 seeds \$2.50; 5000 seeds \$10.

ASTER

For flat-plant sale start seed in March, no earlier, or in a greenhouse one month before they are to be transplanted, using sterilized soil. A 55 to 60-degree temperature is best to maintain growth. Water carefully to prevent overcrowded seedlings standing wet overnight.



Arctotis grandis

WILT-RESISTANT STRAINS

These again make possible the successful growing of Asters. Do not confuse "Aster-wilt" with "Aster yellows." The latter shows yellow spots and distorted flowers on the plants which shrivel up. "Aster yellows," caused by leaf hoppers, is controlled by dusting with 5% DDT.

NEW ASTER, POWDER PUFF MIXED

A new Bouquet type with 2-foot V-shaped plants, a foot across, topped with 15 to 20 fully double "puff-ball" cut-flowers in all the Aster colors. $\frac{1}{8}$ oz. 45c; $\frac{1}{4}$ oz. \$1.25; oz. \$3.75; $\frac{1}{4}$ lb. \$11.

American Beauty, W. R., Mixed. These flowers, 4 to 5 inches across, have full heads of incurved petals and 18-inch stems and are produced in early September on $2\frac{1}{2}$ to 3-foot plants.

The keeping qualities are fine. $\frac{1}{8}$ oz. 50c; $\frac{1}{4}$ oz. 90c; oz. \$2.75; $\frac{1}{4}$ lb. \$8.25; lb. \$25.

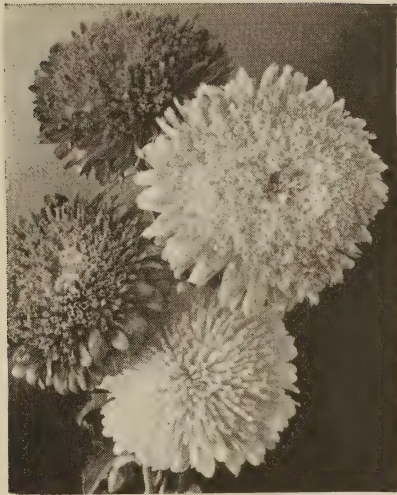


Aster, Wilt-resistant Branching

Branching, W. R. This superb strain forms strong, branching bushes, $2\frac{1}{2}$ to 3 feet high, bearing on long, strong stems their chrysanthemum-like, large, fluffy blooms, double to the center, of exquisite form and color, in mid-September. **Azure-Blue, Crimson, Shell-Pink, Purple, Rose, White, and Mixed.** Each, $\frac{1}{8}$ oz. 35c; $\frac{1}{4}$ oz. 65c; oz. \$1.85; $\frac{1}{4}$ lb. \$5.60; lb. \$17.

Crego Improved, W. R. Mixed. Robust, 2 to $2\frac{1}{4}$ -foot branching plants, which bear in mid-September, displays of large, double flowers with flat, curled petals. Fine for cutting. $\frac{1}{8}$ oz. 35c; $\frac{1}{4}$ oz. 65c; oz. \$2; $\frac{1}{4}$ lb. \$6; lb. \$18.

Early Giant, W. R. Mixed. The 4 to 5-inch flowers are very full with broad, flat graceful petals daintily plumed and intertwined and appear about August 20 on 18-inch stems. The $1\frac{1}{2}$ to 2-foot plants branch low on the central stem with few laterals. $\frac{1}{8}$ oz. 60c; $\frac{1}{4}$ oz. \$1; oz. \$3; $\frac{1}{4}$ lb. \$9.



Aster, Princess, Wilt-Resistant

REGULAR STRAINS (Not Wilt-Resistant)

California Giants, Mixed. This very fine strain combines the giant size and vigor of American Beauty with the earliness and fluffy, flat, curled petals of Crego. The 5-inch flowers are full-centered, on 18-inch stems, from late September to frost, on 3-foot plants. $\frac{1}{16}$ oz. 35c; $\frac{1}{4}$ oz. \$1; oz. \$3; $\frac{1}{4}$ lb. \$9.

Giant California Sunshine, Mixed. Has beautiful half-double 5-inch blooms on long, stiff stems. The yellow, quill-like cushion center is encircled by a single row of contrasting petals. They bloom in mid-September on 2 to 3-foot plants. $\frac{1}{8}$ oz. 60c; $\frac{1}{4}$ oz. \$1; oz. \$3; $\frac{1}{4}$ lb. \$9.

Imbricated Pompon, Mixed. Nice small round pompon blossoms, often as many as twenty to a plant, in early August, on upright 15-inch plants excellent for pot culture. $\frac{1}{8}$ oz. 65c; $\frac{1}{4}$ oz. \$1.20; oz. \$3.50; $\frac{1}{4}$ lb. \$10.50.



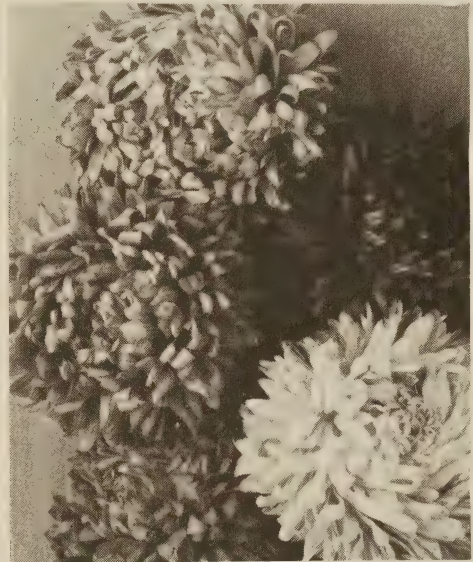
Balsam, Dwarf Bush

ASTER, WILT-RESISTANT STRAINS

Heart of France, W. R. Medium-sized, rich deep red flowers with long stems in late August, on $1\frac{1}{2}$ to 2-foot branching, robust plants. The double flowers are like chrysanthemums. $\frac{1}{8}$ oz. 60c; $\frac{1}{4}$ oz. \$1; oz. \$3; $\frac{1}{4}$ lb. \$9.

Princess Bedding, W. R. Mixed. The $3\frac{1}{2}$ -inch flowers have full, deep, crested centers surrounded by rows of guard petals, and are fine for cutting. The free-flowering, 20 to 24-inch branching plants bloom early. $\frac{1}{8}$ oz. 55c; $\frac{1}{4}$ oz. \$1; oz. \$3; $\frac{1}{4}$ lb. \$9; lb. \$27.

Queen of the Market, W. R. Mixed. Graceful, double flowers of good size, on long stems for cutting, appear in early August, on branching plants 20 inches high. Excellent for early cut-flowers which keep well. $\frac{1}{8}$ oz. 35c; $\frac{1}{4}$ oz. 60c; oz. \$1.85; $\frac{1}{4}$ lb. \$5.50; lb. \$16.50.



Aster, American Beauty

BALSAM

Lady Slipper. These half-hardy annuals love hot sun, rich soil, and plenty of water. They grow very rapidly from seed sown in May.

Double Camellia-flowered, Mixed. A bushy 18-inch shining green plant with extra-double flowers clustered all along the stems. $\frac{1}{4}$ oz. 30c; oz. 90c; $\frac{1}{4}$ lb. \$2.75.

Dwarf Bush. The double flowers of this type appear in clusters on top of the stem, instead of on the sides. They make nice 8 to 10-inch compact pot-plants in bloom for spring sale. Torch, vermilion-red, and Mixed. Each, $\frac{1}{8}$ oz. 35c; $\frac{1}{4}$ oz. 65c; oz. \$2; $\frac{1}{4}$ lb. \$6; lb. \$18.

BEDDING BEGONIAS

A January sowing will make fine bedding plants, 10 inches high, for full sunlight and partial shade, with a continuous profusion of small flowers from summer to fall.

Ball Red. Bright scarlet, medium large on fairly dwarf uniform plants.

Ball Deep Rose. In winter is deep rosy red fading to luminous pink when warmer.

Snowbank. Large glistening white on dense even plants. The best of all whites.

Each of the above 3, Tr. pkt. \$1.25;
1/128oz. \$1.95; 1/64oz. \$2.75; 1/32oz. \$5.

BELLS OF IRELAND

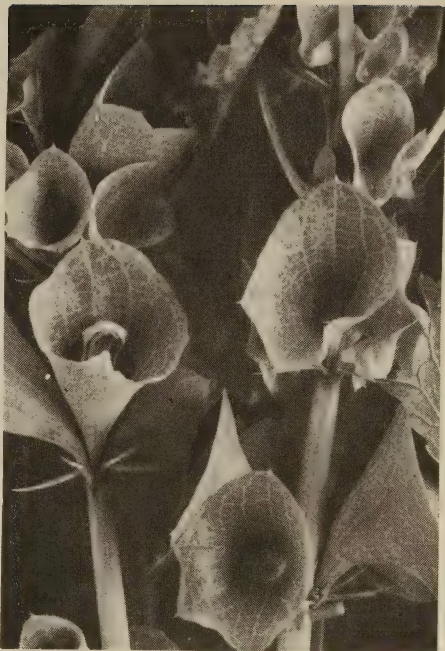
Each stem of the 2-foot base-branching plants is closely set with large, bell-like sheaths of translucent green. These are novel for garden use but in great demand for flower arrangements as they last long when cut. The seeds germinate best in warm soil. Easily grown in greenhouse benches, in pots or outdoors. 1/16oz. 35c; 1/4oz. 95c; oz. \$2.75.

BROWALLIA

This excellent pot-plant, if seeded in January and benched in March, will bloom in May. For bedding start seed in February or early March, transplant to pots and set out in the garden beds in May. As they bloom all summer, grow them in flats also.

Speciosa major. Large, 5-petaled star-shaped flowers of bright ultramarine-blue on 10 to 12-inch very free-flowering plants. 1/64oz. 75c; 1/16oz. \$2.25; 1/8oz. \$4; 1/4oz. \$7.50.

Viscosa compacta, Sapphire. A more compact 9-inch form with full foliage and small, pretty dark blue flowers with white eye. 1/64oz. 35c; 1/16oz. \$1; 1/4oz. \$3.



Bells of Ireland

CALENDULA

One of the showiest hardy annuals, blooming from early summer until frost in any good garden soil in localities where the summer heat is not excessive.

BEDDING VARIETIES

For flat-grown plants start the seed indoors in February or March and grow in a cool temperature with plenty of air in fairly rich soil. They make very colorful beds.

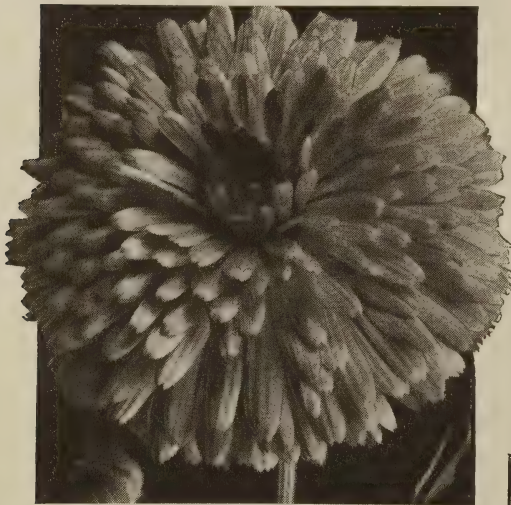
Pacific Beauty. These are so far superior to other strains that we offer no other. A recent development, they produce uniformly larger flowers of better formation, longer and straighter stems, clearer colors and are very much more resistant to the heat of midsummer.

Pacific Beauty Lemon. A pure lemon-yellow with wide petals.

Pacific Beauty Orange. This is properly described as bright persimmon-orange.

Pacific Beauty Mixed. A beautiful blend of Calendula colors including cream white, soft yellow, lemon, apricot, orange, etc.

Each of the above 3, 1/4oz. 35c;
oz. \$1; 1/4lb. \$3; 1lb. \$9.



Pacific Beauty Calendula

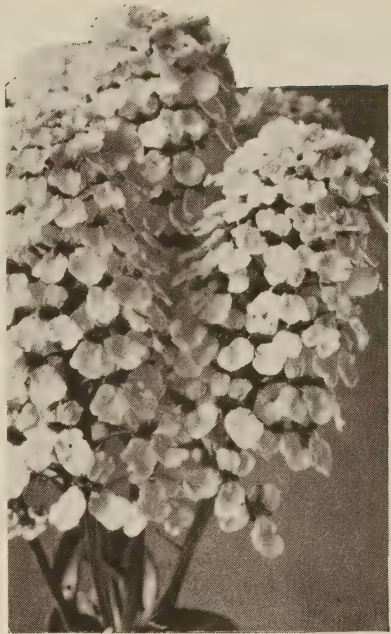
For New Flowers for 1958
See inside back cover.

CANDYTUFT

To have nice flower spikes for Mother's Day, start seed in greenhouse early in January.

Iceberg White Hyacinth-flowered. An extra-select florist's free-blooming strain, with nice 12-inch branching plants, each branch terminating in an immense spike of snow-white florets. $\frac{1}{4}$ oz. 35c; oz. \$1; $\frac{1}{4}$ lb. \$3; lb. \$9.

Dwarf Mixed Umbellata. Compact, uniform plants, 6 inches high, bearing quite large flower-umbels. Unexcelled for bedding plants. $\frac{1}{4}$ oz. 35c; oz. 90c; $\frac{1}{4}$ lb. \$2.75; lb. \$8.



Candytuft, Iceberg White Hyacinth-fl'd.

CARNATION

Start seed from January to March indoors and transplant to the garden in late May, 6 inches apart. Blooms from early summer right up to frost.

Chabaud's Giant Formula Mixed. These are of upright form, 18 inches high, each plant with many stalks bearing huge, clove-scented, double flowers of fine form. Fine for cutting. $\frac{1}{16}$ oz. 30c; $\frac{1}{4}$ oz. 90c; oz. \$2.75; $\frac{1}{4}$ lb. \$8.25; lb. \$25.

Chabaud's Giant Orange Sherbet. A new interesting color in this popular strain. The deeply lacinated petals are orange-apricot striped and flushed with scarlet giving a very striking effect. Large double, fragrant, clove-scented blooms. $\frac{1}{16}$ oz. 65c; $\frac{1}{4}$ oz. \$2; oz. \$6; $\frac{1}{4}$ lb. \$18.

CELOSIA

For outdoor cutting sow the seed in May. They bloom continuously from midsummer until frost. For spring pot and flat-plant sale start the seed indoors in March and transplant.

Cristata, Dwarf Empress. Cockscomb. Dwarf 10-inch plants with dark bronze foliage and enormous crimson heads like a cockscomb. $\frac{1}{16}$ oz. 25c; $\frac{1}{4}$ oz. 75c; oz. \$2.25; $\frac{1}{4}$ lb. \$7.

Cristata, Dwarf Mixed. Cockscomb. These dwarf, 1-foot plants are very uniform, bearing bright flowers in many colors, including crimson, rose, orange, gold and white. They are fine for borders. $\frac{1}{16}$ oz. 25c; $\frac{1}{4}$ oz. 75c; oz. \$2.25; $\frac{1}{4}$ lb. \$7.

Cristata, Toreador. All-America, 1955. Huge, bright red cockscombs on light green, 20-inch plants. Easily grown and has many uses. $\frac{1}{16}$ oz. 55c; $\frac{1}{4}$ oz. \$1.65; oz. \$5.

Plumosa, Pampas Plume, Mixed. Fine quick growing, big fleecy feathery plumes in brilliant colors. Heat-loving, pest-free cut-flowers. $\frac{1}{16}$ oz. 25c; $\frac{1}{4}$ oz. 75c; oz. \$2.25; $\frac{1}{4}$ lb. \$6.75.

Plumosa, Ostrich Plumed, Mixed. Handsome plants of symmetrical, pyramidal growth, 2 feet high, each branch topped with a richly colored plume. They make gorgeous display beds from July until September in crimson, fiery red, scarlet and yellow. They are very effective in massed plantings. $\frac{1}{16}$ oz. 35c; $\frac{1}{4}$ oz. 65c; oz. \$2; $\frac{1}{4}$ lb. \$6.

Plumosa, Dwarf Fire Feather. A very dwarf plumed, pyramidal type which is fine for bedding and for spring pot-plants. The perfect pyramidal plants, 12 inches high, have terminal spires of fiery red, branching mostly from the base of the plant. $\frac{1}{16}$ oz. 25c; $\frac{1}{4}$ oz. 75c; oz. \$2.25; $\frac{1}{4}$ lb. \$7.

Plumosa, Dwarf Golden Feather. This is the counterpart to Fire Feather. It has exactly the same plant habit, 12 inches high, and is base branching but the many spires are golden yellow. $\frac{1}{16}$ oz. 25c; $\frac{1}{4}$ oz. 75c; oz. \$2.25; $\frac{1}{4}$ lb. \$7.



Celosia, Toreador

CENTAUREA

Sow outdoors in late fall for spring cut-flowers, or sow indoors in March in pots or plant bands for spring plant sale.

Cyanus, Dwarf Double. Compact 12-inch plants covered with flowers. The foliage, distinct from others, forms a bright green tuft, and the flowers are very double. Excellent pot-plant for a cold greenhouse. **Jubilee Gem**, deep intense blue; and **Dwarf Double Mixed** (8 shades). $\frac{1}{2}$ oz. 25c; $\frac{1}{4}$ oz. 40c; oz. \$1.20; $\frac{1}{4}$ lb. \$3.50.

Cyanus, Super-Giant. Cornflower. This is a perfected strain, with larger, more double and more vividly colored flowers on long stems, splendid for cutting on 3-foot plants. **Blue Boy**, cornflower-blue; and **Formula Mixed**, containing all of the colors, each proportioned according to its popularity. Each, $\frac{1}{4}$ oz. 25c; oz. 65c; $\frac{1}{4}$ lb. \$2; lb. \$6.50.

WHITE-LEAVED CENTAUREA

Dusty Miller. Used for edging, the glistening white foliage making a striking contrast with bright coleus, salvias or red cannas. Start the seed indoors in January or February.

Gymnocarpa. Ornamental, round bushes, 2 feet high, of silvery gray, fernlike foliage and fine for hanging-baskets and edging. $\frac{1}{4}$ oz. 35c; oz. 90c; $\frac{1}{4}$ lb. \$2.75.



Centaurea Cyanus, Super-Giant

CHRYSANTHEMUM

Showy flowers of easiest culture and fine for cutting. Sow outdoors in May and thin to 10 inches apart for bloom all summer. For earlier flowers sow indoors in March and transplant.

Carinatum, Merry Mixed. In two months the 2-foot plants bear, on strong stems, an amazing display of daisy-like zoned flowers, in entirely new color combinations. They bloom all summer and are fine for cutting. $\frac{1}{4}$ oz. 45c; oz. \$1.40; $\frac{1}{4}$ lb. \$4.25.

CLARKIA

Elegans, Double, Mixed. Long sprays of double flowers on 2-foot plants. Seed in January in 2-inch pots. $\frac{1}{4}$ oz. 35c; oz. \$1.10.



Chrysanthemum, Merry Mixed

CLEOME

Spider Flower. Blooms from June to frost from seed sown early. Free from insects and disease. Height 4 feet.

Giant Pink Queen. Large pink heads. $\frac{1}{8}$ oz. 35c; $\frac{1}{4}$ oz. 55c; oz. \$1.65; $\frac{1}{4}$ lb. \$5.

COLEUS

An attractive vari-colored foliage plant very widely used for bedding. For spring plants sow seed indoors Jan.-Feb. and shift plants later to pots of rich, porous soil.

Improved Rainbow, Mixed. Heart-shaped crimped, toothed and frilled in remarkable colors. $\frac{1}{128}$ oz. 90c; $\frac{1}{64}$ oz. \$1.50; $\frac{1}{32}$ oz. \$2.65; $\frac{1}{16}$ oz. \$4.50; $\frac{1}{8}$ oz. \$7.85; $\frac{1}{4}$ oz. \$13.50.

CORN, ORNAMENTAL

Many growers, particularly those having a roadside stand, have developed a nice demand for these oddly colored, fancy dried ears used for fall decorations.

Indian Squaw. Decorative, multi-colored kernels on large, long ears. $\frac{1}{4}$ lb. 40c; lb. \$1.20; 5 lbs. \$5.50; 10 lbs. \$10.

COSMOS

For flat-plant sale, start the seed in mid-March in a warm temperature. The seed may be sown in the open ground after warm weather sets in, thinning to allow ample room.

Dwarf Early, Mixed. Flowers, 3 inches across, on vigorous, 4-foot plants in July. The flowers rival the size of the late varieties, but mature four weeks earlier. $\frac{1}{4}$ oz. 40c; oz. \$1.10; $\frac{1}{4}$ lb. \$3.35.

Early Double, Mixed. The 4-foot bushy plants are massed with double flowers, like anemone-flowered chrysanthemums, $1\frac{1}{2}$ to 2 inches across, in July. They come about 65 per cent double. $\frac{1}{8}$ oz. 60c; $\frac{1}{4}$ oz. \$1; oz. \$3; $\frac{1}{4}$ lb. \$9.

Sensation, Dazzler, deep crimson-red; **Radiance,** deep rose petals with crimson center zone. Each, $\frac{1}{4}$ oz. 40c; oz. \$1.15; $\frac{1}{4}$ lb. \$3.50.

Sensation, Mixed. These are huge flowers 4 to 5 inches across, in white, crimson and pink shades, with broad, heavy, fluted petals which slightly overlap. They are produced on long, strong stems in 10 weeks from seed, on heavily foliaged 4-foot plants. $\frac{1}{4}$ oz. 40c; oz. \$1.15; $\frac{1}{4}$ lb. \$3.50.

CYNOGLOSSUM

Firmament. A new dwarf type with bushy, compact, 15-inch plants smothered with bright, rich blue flowers throughout spring and summer. Excellent for cutting, for beds, and for rock-gardens. $\frac{1}{8}$ oz. 25c; $\frac{1}{4}$ oz. 40c; oz. \$1.25.

DIANTHUS

Pinks. Sow seed outdoors in April; start seed indoors in February-March for early sale.

Double Fringed Pinks, Mixed. A very fine mixture with large, double, deeply cut flowers on stiff, upright stems. They range from white to purplish red on 12-inch plants. $\frac{1}{4}$ oz. 50c; oz. \$1.50; $\frac{1}{4}$ lb. \$4.50.



Cosmos, Dwarf Early

DAHLIA

Easily raised from seed and will bloom the first year if sown indoors from February to March. For pot-plants, start seed in January.

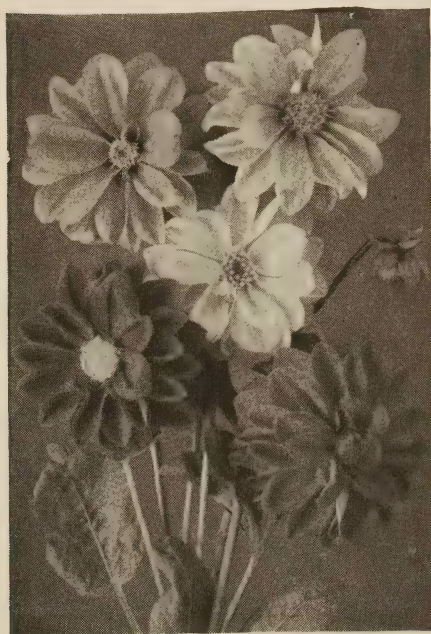
Unwin's XXX Dwarf Hybrids. An especially reselected strain with double and semi-double flowers in a great variety of colors; canary-yellow, scarlet, terra-cotta, crimson, lavender-pink, purple, maroon, buff, cream, white, etc. In 3 months from seed on compact 2-foot plants. Fine flat- or pot-plants. $\frac{1}{8}$ oz. 45c; $\frac{1}{4}$ oz. 75c; oz. \$2.50; $\frac{1}{4}$ lb. \$7.50; lb. \$22.50.

DIMORPHOTHECA

This is a bushy type of plant with 2-inch daisy-like blooms that have black centers and long, narrow, incurving glossy petals and thin wiry stems. They are 12 inches high and are easily grown for flat-plant sale.

Aurantiaca Mixed. Contains all of the available colors such as bright yellow, orange, buff and cream shades. $\frac{1}{8}$ oz. 25c; $\frac{1}{4}$ oz. 40c; oz. \$1.20; $\frac{1}{4}$ lb. \$3.75; lb. \$12.

Glistening White. This black-eyed, glistening white daisy, often 4 inches across, really likes hot dry weather. The dwarf plants growing only 6 to 8 inches high are fine for edging and bloom long through the summer. $\frac{1}{8}$ oz. 35c; $\frac{1}{4}$ oz. \$1; oz. \$3.



Dahlia, Unwin's XXX Dwarf Hybrids

DRACAENA

Indivisa. Long, narrow green lance leaves for window-boxes and pot-plants. Sow seed in January, pot in April and shift as required. Ht. 2 ft. Oz. 55c; $\frac{1}{4}$ lb. \$1.65; lb. \$6.

GAILLARDIA

These provide a continual cutting of bright flowers from early summer until frost. Sow seed outdoors in April or May or indoors in March.

Lorenziana, Double Mixed. The $1\frac{1}{2}$ -foot bedding plants produce bright, double ball-like flowers in orange, yellow, red and rose shades. $\frac{1}{4}$ oz. 40c; oz. \$1.20; $\frac{1}{4}$ lb. \$3.50.

GLOBE AMARANTH

The dwarf strain is very popular for pot-plants and good for low beds.

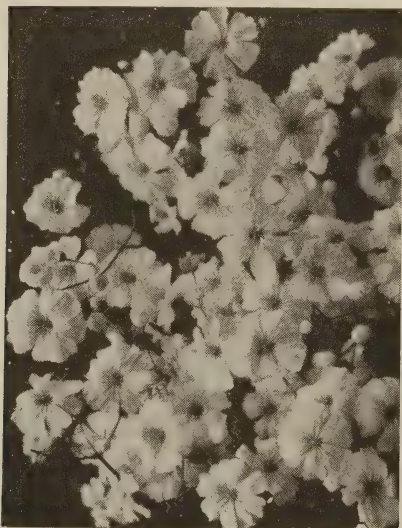
Dwarf Purple Buddy. Clover-like, purple flower-heads. Freely produced on robust 6 to 8-inch plants for pot-culture. $\frac{1}{8}$ oz. 40c; $\frac{1}{4}$ oz. 60c; oz. \$1.80; $\frac{1}{4}$ lb. \$5.50.

Mixed. Purple-red, pink, orange and white striped violet on 18-inch plants. $\frac{1}{4}$ oz. 35c; oz. \$1; $\frac{1}{4}$ lb. \$3.

GYPSOPHILA ELEGANS

Baby's Breath. Excellent to mix with other flowers. Sow at intervals where to bloom.

White Covent Garden Market, Reselected. A big-flowered pure white 2-foot strain which is unsurpassed. A high percentage of the flowers are 6 to 8-petaled on nice long stems. Oz. 30c; $\frac{1}{4}$ lb. 85c; lb. \$2.50; 5 lbs. \$11.



Gypsophila elegans, White Covent Garden Market, Reselected



Dimorphotheca aurantiaca

For text and price see page 31

GOURDS, ORNAMENTAL

All of these small gourds are very easily grown. They are popular for roadside stand sale and bring in extra money with little effort. When properly dried and varnished they last a long time. Start seeds after frost is past.

Small Varieties. Those shown below are the best.

Apple. Cream-white or green apple shape.

Egg-Shape Bicolor. Yellow and green.

Flat-Striped. Dark green and white stripes.

Orange. Ball shaped, like a mock-orange.

Pear Bicolor. Neck yellow, base striped green.

Pear Striped. Green with white stripes.

Spoon. Yellow club with slender necks.

Warted. Various shapes in white or orange.

Each, $\frac{1}{2}$ oz. 50c; oz. 90c; $\frac{1}{4}$ lb. \$2.75; lb. \$8.25

Small Gourds Mixed. This is a formula mixture containing all eight of the varieties above and is very popular. $\frac{1}{2}$ oz. 50c; oz. 80c; $\frac{1}{4}$ lb. \$2.40; lb. \$7.25.

HELICHRYSUM

Monstrosum, Mixed. Strawflower. Big, double, brilliant blooms for cutting or drying on $2\frac{1}{2}$ -foot plants. $\frac{1}{4}$ oz. 45c; oz. \$1.35; $\frac{1}{4}$ lb. \$4.

IMPATIENS

These are sure fire all summer blooms for shade. They are unusually colorful for dwarf beds where shade prohibits the use of many other dwarf 6-8 inch plants. You will find a variance in color from seed.

Dwarf Bright Rose. Luminous deep rose.

Dwarf Pinkie. Coral-rose with salmon cast.

Both above, tr. pkt. \$1.50; $\frac{1}{32}$ oz. \$3; $\frac{1}{16}$ oz. \$5.75

Dwarf Bright Orange. Extra dwarf, flat growth.

Tr. pkt. \$1.75; $\frac{1}{2}$ oz. \$4.50; $\frac{1}{16}$ oz. \$8

KOCHIA

Trichophylla. The light green pyramidal 3-foot bushes, close and compact, turn beautiful deep red in autumn. Oz. 45c; $\frac{1}{4}$ lb. \$1.35; lb. \$4.

LANTANA

Start seed indoors in February and give bottom heat. The seed is slow to germinate.

Dwarf Bedding Hybrids. Compact 1-foot plants, bearing flower heads in white, yellow, orange, rose, and scarlet. $\frac{1}{4}$ oz. 85c; oz. \$2.50.

THE 8 BEST LARKSPURS

For early outdoor bloom seed about March 1 indoors in flats. They must be grown cool in good soil. Sow outdoors in late fall for very earliest.

New Supreme. An improved Giant Imperial, this giant base-branching type has a much longer main spike growing $2\frac{1}{2}$ to 3 feet outdoors and 4 feet under glass, with larger, fully double, more closely spaced flowers. Very fine for greenhouse as well as outdoor culture.

Brilliant Rose. The deepest rose of all.

Dark Blue Supreme. Bright violet-purple.

Light Blue Supreme. Clear blue, with no mauve.

Lilac Supreme. Exceptionally clear lavender.

Pink Supreme. Clear rose-pink.

Salmon Supreme. Strong true salmon.

White Supreme. Absolutely pure white.

Supreme Mixed. A properly proportioned blend of all of the above attractive colors.

Each, $\frac{1}{4}$ oz. 55c; oz. \$1.50; $\frac{1}{4}$ lb. \$4.50; lb. \$13.50



Larkspur, White Supreme

LAVATERA

Splendens, Loveliness. Beautiful flowers resembling Hollyhocks, of a deep salmon-rose color from July to September on upright, $2\frac{1}{2}$ -foot plants. $\frac{1}{4}$ oz. 50c; oz. \$1.50.

LOBELIA

Sow indoors in January for pot-plants. A February or March seeding will provide flat plants.

Blue Gown. Fine, compact habit, with good sized flowers of deep blue, without an eye. $\frac{1}{16}$ oz. 35c; $\frac{1}{4}$ oz. 90c; oz. \$2.75.

Cambridge Blue. Dwarf 4-inch plants with bright green foliage covered all summer with pretty, light blue flowers. $\frac{1}{16}$ oz. 35c; $\frac{1}{4}$ oz. 90c; oz. \$2.75.

Crystal Palace, compacta. Has 4-inch plants with dark bronzy green foliage and dark blue flowers. $\frac{1}{16}$ oz. 35c; $\frac{1}{4}$ oz. 90c; oz. \$2.75.

Mrs. Clibran. An improved, extra-fine strain with dwarf medium-green plants and deep blue flowers with a contrasting white eye. $\frac{1}{16}$ oz. 35c; $\frac{1}{4}$ oz. 90c; oz. \$2.75.

LUPINUS HARTWEGI

Lupine. Easily grown annuals with dark, glossy foliage and long, graceful spikes of pea-shaped flowers in delightful colors from June to September. Sow seed in April or May in partial shade, where plants are to remain, and thin out to 15 to 18 inches apart, as they do not like transplanting.

Giant King Hybrids, Mixed. All-America Winner. The very finest strain, with $3\frac{1}{2}$ -foot base-branching plants, each producing 4 to 6 very long, erect spikes covered with large dark blue, sky-blue, rose, and white flowers. Like well-drained, sandy soil. $\frac{1}{4}$ oz. 35c; oz. 90c; $\frac{1}{4}$ lb. \$2.75; lb. \$8.25.

MARVEL OF PERU

Four O'Clock, Fine Mixed. Bushy, 2-foot plants with glossy foliage dotted with hundreds of single flowers in white, yellow, red, rose, and blue. Makes a fine hedge. Oz. 50c; $\frac{1}{4}$ lb. \$1.50; lb. \$4.50.

MOONFLOWER

Giant White (Ipomea Noctiflora). A rapid growing climber reaching a height of 15 feet. On dull days or at night the plants are covered with fragrant, white Morning-Glory-like flowers often 5 inches across. $\frac{1}{4}$ oz. 25c; oz. 65c; $\frac{1}{4}$ lb. \$1.90.

MARIGOLDS

Valuable for small pot-plants if started in January and grown in a warm temperature. For flat-grown plants start indoors in March.

EXTRA-DWARF DOUBLE FRENCH

A fine new early-flowering strain bred to produce neat 9-inch plants, uniform, bushy, with a profusion of very early, double flowers.

Butterball. Plants 6 to 8 inches high and flowers with crested centers of butter-yellow tipped maroon, flanked by butter-yellow guard petals.

Lemondrop. Early, profuse blooming, compact 9-inch plants with fully double, canary-yellow flowers. Seedling plants bloom in the flats.

Spry. The flowers are 1½ inches across with bright, clear yellow crested centers surrounded by mahogany-red guard petals.

Sunkist. Deep golden orange, 2-inch blooms with crested center of tubular petals flanked by broad deep orange guard petals.

Yellow Pygmy. Free-flowering, dwarf, compact, with small double light yellow 1-inch flowers.

Extra-Dwarf Double French Mixed. These are splendid for mixed edgings or low borders.

Any of the above 6, ⅓oz. 30c; ¼oz. 55c; oz. \$1.65; ¼lb. \$5; lb. \$15.

DWARF SINGLE FRENCH

Compact, free-flowering like the double form with uniform, single flowers.

Dainty Marietta. Dwarf, compact 6-inch plants covered with Naughty Marietta like blooms. ⅓oz. 30c; ¼oz. 90c; oz. \$2.70; ¼lb. \$8.

Flash. The 1¾-inch flowers, 8 weeks after sowing, are tangerine overlaid Marigold-red. ⅓oz. 25c; ¼oz. 40c; oz. \$1.25; ¼lb. \$3.75.

Naughty Marietta. Golden yellow, 2-inch flowers with maroon center blotches. ⅓oz. 30c; ¼oz. 50c; oz. \$1.50; ¼lb. \$4.50.

Redhead. Crested 2-inch flowers first mahogany, then auburn, later bronze, with gold center tipped maroon. Ht. 15 in. ⅓oz. 30c; ¼oz. 50c; oz. \$1.50; ¼lb. \$4.50.



Marigold, Spry



Marigold, Lemondrop

EXTRA-DWARF DOUBLE AFRICAN

Larger flowers than Dwarf Double French, but sow 2 weeks earlier.

Cupid. Freely produced. 2½-inch flowers on dwarf 6-inch plants with odorless foliage. Golden, golden yellow; Orange, vivid; Yellow, primrose. Each, ⅓oz. 50c; ¼oz. \$1.50; oz. \$4.50; ¼lb. \$14.

DWARF DOUBLE FRENCH

Compact 12-inch bushy plants covered with fully double flowers, 1¾ inches across.

Harmony. Orange crested centers flanked by maroon-brown guard petals. ¼oz. 50c; oz. \$1.60; ¼lb. \$5; lb. \$15.

Royal Scot. Alternate uniform stripes of rich mahogany and golden yellow. ⅓oz. 30c; ¼oz. 50c; oz. \$1.50; ¼lb. \$4.50.

Rusty Red. Large rust-red, fully double flowers 2 inches across, borne in great profusion on medium-dwarf 13-inch plants. ⅓oz. 20c; ¼oz. 60c; oz. \$1.75; ¼lb. \$5.25.

Scarlet Glow. The brightest red in this class, opening deep scarlet and aging tangerine. ⅓oz. 30c; ¼oz. 55c; oz. \$1.65; ¼lb. \$5.

Color Magic. Bushy plants like Spry but with 1½-inch double flowers in shades of yellow and orange irregularly marked with dark red. The color changes as the season progresses. ⅓oz. 35c; ¼oz. 60c; oz. \$2; ¼lb. \$6.

LARGE-FLOWERED VARIETIES

African Super Alldouble Mixed. Huge, double quilled heads are held erect on strong, 3-foot plants. ⅓oz. 30c; ¼oz. 55c; oz. \$1.65; ¼lb. \$6.

Dwarf Giant, Pot o'Gold. Deep golden orange, 4-inch flowers on compact 15-inch plants, many at one time, all 100% double. ⅓oz. 35c; ¼oz. 60c; oz. \$1.80; ¼lb. \$5.50.

Glitters. Large, 3½-inch flowers like Mammoth Mum but soft golden yellow and earlier, on 2½-foot, erect bushy plants. ⅓oz. 30c; ¼oz. 75c; oz. \$2; ¼lb. \$6.

LARGE MARIGOLDS, continued

Goldsmith. Nice chrysanthemum-like 4-inch golden orange flowers, with incurved petals, on base-branching 2½-foot plants. ⅓oz. 40c; ¼oz. 65c; oz. \$2; ¼lb. \$6.

Guinea Gold. Double 3-inch orange flowers flushed with gold have ruffled, loose petals and bloom freely on pyramidal plants, 2½ feet high. ¼oz. 55c; oz. \$1.65; ¼lb. \$5.

Mammoth Mum. Bushy, 3-foot plants bear long-stemmed, fluffy, ball-like, pale sulphur yellow 3½-inch flowers. ⅓oz. 25c; ¼oz. 75c; oz. \$2.25; ¼lb. \$7.

Yellow Supreme. Large, carnation-like fragrant flowers with broad, frilled petals of creamy lemon on 2½-foot odorless plants. ⅓oz. 30c; ¼oz. 50c; oz. \$1.50; ¼lb. \$4.50.

HUGE-FLOWERED MARIGOLDS

This gigantea class produces the very largest flowers of all. The strong, upright plants are vigorous and carry an abundance of bloom.

NEW CRACKERJACK MIXED. This new Gigantea Marigold has huge flowers, 5 and sometimes 6 inches across, produced in abundance on plants much more compact than Sunset Giants, growing 2½ to 3 feet tall. They flower weeks earlier; in fact, Crackerjack is the very earliest of all huge-flowered Marigolds. The colors include all shades of yellow, orange and gold. ⅓oz. 30c; ¼oz. 90c; oz. \$2.70; ¼lb. \$8.

Orange Sunset. Strong, 3½-foot plants with huge, ruffled, tightly petaled, peony-flowered blooms in pure orange, the largest of all Marigolds. ⅓oz. 25c; ¼oz. 65c; oz. \$2; ¼lb. \$6.

Sunset Giants, Mixed. Full, 5-inch flowers with broad, overlapping petals in shades of orange and yellow on 3½-foot plants. ⅓oz. 35c; ¼oz. 55c; oz. \$1.65; ¼lb. \$5.

MESEMBRYANTHEMUM

Criniflorum (Livingstone Daisy.) Spreading plant covered with one inch flowers in many colors. Likes sun. ⅓oz. 40c; ¼oz. \$1.10; oz. \$3.25.

Crystallinum. Ice Plant. Small, pink white flowers on 6-inch, spreading plants with ice-like globules. ¼oz. 50c; oz. \$1.50.

MORNING-GLORY

Candy Pink. Large clear pink flowers on vines somewhat shorter than Heavenly Blue. ⅓oz. 30c; ¼oz. 50c; oz. \$1.50.

Heavenly Blue, Early-flowering. Huge 4 to 5-inch, sky-blue flowers with cream throats. ¼oz. 25c; oz. 75c; ¼lb. \$2.25.

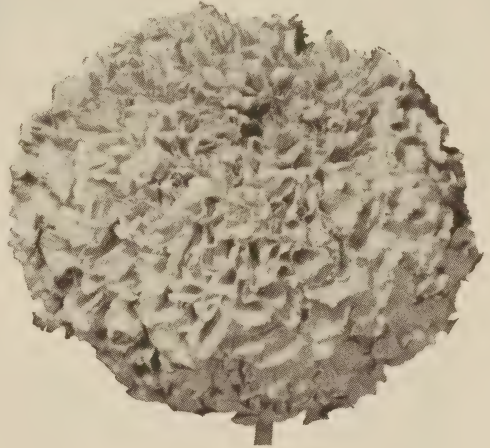
Pearly Gates. White 4-inch flowers with creamy throat. ¼oz. 35c; oz. \$1; ¼lb. \$3.

NEMESIA

Dwarf Hybrids, Mixed. Dwarf, 8-inch plants with brilliant orchid-like flowers. For pots sow January–February. Grow in 40–50° house. For flats sow March 1st. ⅓oz. 45c; ¼oz. \$1.35; oz. \$4; ¼lb. \$12.

NIEREMBERGIA

Purple Robe. Pretty, deep violet-purple cup-flowers on 6-inch plants, 10 inches across from June to frost. For pots sow in January, for bedding plants sow early in February. Extra fine for edgings. Tr. pkt. 55c; ⅓oz. \$1; ½oz. \$1.75; ⅓oz. \$3; ⅓oz. \$5.25.



Marigold, Crackerjack

NASTURTIUM

Dwarf, Single Mixed. These are both plain and fancy-leaved, one foot high, with variety of color. Oz. 30c; ¼lb. \$1; lb. \$3.

Dwarf, Semi-Double Gem, Mixed. This is a very well-balanced mixture. Oz. 45c; ¼lb. \$1.25; lb. \$3.75.

Double Gleam Hybrids, Mixed. Fine large, sweet-scented double flowers, on vigorous, semi-dwarf bushes which throw out short runners. Oz. 40c; ¼lb. \$1.25; lb. \$3.75.

NICOTIANA

Dwarf White Bedder. This is a vast improvement over the long known white affinis variety, as it grows only 15 inches high, stands erect, and the large, pure white sweet-scented flowers remain open all day long. ⅓oz. 65c; ⅓oz. \$1.15; ¼oz. \$2.

Daylight Sensation Mixed. This new strain is the very finest development in Nicotiana. The 2-foot plants bear a wealth of flowers in a brilliant color range including scarlet, crimson, rose, coral, mahogany, violet, yellow, lilac and white. The blooms, unlike older strains, remain open during the daytime. ⅓oz. 25c; ¼oz. 55c; oz. \$1.65.

Affinis White. Clusters of flowers like a long tubed Petunia on 3-foot plants. Very fragrant. ¼oz. 25c; oz. 75c; ¼lb. \$2.25.

Crimson Bedder. Pale crimson, 15-inch plants. ⅓oz. 35c; ¼oz. 55c; oz. \$1.65.

PANSY

Sow during July and August, transplant later, set out and winter over with salt hay protection for plants to bloom by May.

Forbes Big Beauties. NEW. Our brightest formula color mixture with over a quarter in light colors. Blotched, mottled and bordered 4-inch flowers in a wonderful color range beyond belief, with round, overlapping petals on stocky, compact plants. $\frac{1}{16}$ oz. \$1; $\frac{1}{8}$ oz. \$1.75; $\frac{1}{4}$ oz. \$3; oz. \$10; $\frac{1}{4}$ lb. \$30; lb. \$90.

Engelmann's Giant. Vigorous and compact. Huge, well-formed flowers both dark and light, all blotched. $\frac{1}{16}$ oz. \$1.35; $\frac{1}{8}$ oz. \$2.35; $\frac{1}{4}$ oz. \$4; oz. \$14; $\frac{1}{4}$ lb. \$50; lb. \$145.

Maple Leaf Giants. Of strong, heavy growth, with 4-inch flowers of round form and heavy substance. $\frac{1}{16}$ oz. 80c; $\frac{1}{8}$ oz. \$1.50; $\frac{1}{4}$ oz. \$2.75; oz. \$9; $\frac{1}{4}$ lb. \$27.

Swiss Giants in Separate Colors. Alpenglow, garnet-red. Berna, violet-blue. Blue Ullswater, wedgwood-blue, dark blotch. Coronation Gold, canary flushed orange. Orange, orange center edged apricot. Pure White, and Yellow Blotched, canary-yellow, black blotch. Each, $\frac{1}{16}$ oz. 80c; $\frac{1}{8}$ oz. \$1.50; $\frac{1}{4}$ oz. \$2.75; oz. \$9; $\frac{1}{4}$ lb. \$27.

Super Swiss Giants Mixed. This blend excels most other Swiss Giant mixtures. The plants are compact and most flowers are beautifully frilled; of perfect form, with thick, rounded petals. $\frac{1}{16}$ oz. 80c; $\frac{1}{8}$ oz. \$1.50; $\frac{1}{4}$ oz. \$2.75; oz. \$9; $\frac{1}{4}$ lb. \$27; lb. \$85.



Forbes Big Beauties Pansy

Dwarf Swiss Giants. More compact plants than Swiss Giants; the flowers are large, in the same colors. $\frac{1}{16}$ oz. 80c; $\frac{1}{8}$ oz. \$1.50; $\frac{1}{4}$ oz. \$2.60; oz. \$8; $\frac{1}{4}$ lb. \$24; lb. \$80.

PETUNIA, LARGE SINGLE

LARGE SINGLE PLAIN EDGED

Dazzler. A new brilliant, deep rose-scarlet. The plants are quite low. Tr. pkt 60c; $\frac{1}{12}$ oz. 90c; $\frac{1}{4}$ oz. \$1.50; $\frac{1}{2}$ oz. \$2.65; $\frac{1}{16}$ oz. \$4.50; $\frac{1}{8}$ oz. \$7.75; $\frac{1}{4}$ oz. \$13.50; oz. \$45.

Popcorn. A dwarf, large-flowered white with huge, glistening white flowers on low-growing, upright plants for pots. $\frac{1}{256}$ oz. \$1; $\frac{1}{128}$ oz. \$1.75; $\frac{1}{64}$ oz. \$2.50; $\frac{1}{32}$ oz. \$4.25; $\frac{1}{16}$ oz. \$7.50; $\frac{1}{8}$ oz. \$13; $\frac{1}{4}$ oz. \$23; oz. \$80.

White Magic. A heavy yield of big ruffled pure white flowers on 12-inch plants. $\frac{1}{2}$ tr. pkt. \$1.75; tr. pkt. \$3; $\frac{1}{128}$ oz. \$5.50; $\frac{1}{64}$ oz. \$10; $\frac{1}{32}$ oz. \$19; $\frac{1}{16}$ oz. \$36; $\frac{1}{8}$ oz. \$69; $\frac{1}{4}$ oz. \$129.

Dwarf Elk's Pride. Very large, deep velvety violet-purple flowers, on dwarf upright plants excellent for beds and porch-boxes.

Dwarf Pink Glory. Extra-large, flame-rose-pink on compact plants, for pot-culture.

Royalty. Large, ruffled purple with white star and variations. Very attractive.

Snowstorm. White ruffled 3 to 4-inch flowers, with soft yellow throat for pots.

White Cloud. Dwarf, compact, for pot-culture with ruffled, white, 4-inch flowers.

Any of above 5, $\frac{1}{256}$ oz. 60c; $\frac{1}{128}$ oz. \$1; $\frac{1}{64}$ oz. \$1.75; $\frac{1}{32}$ oz. \$3; $\frac{1}{16}$ oz. \$5; $\frac{1}{8}$ oz. \$8.75; $\frac{1}{4}$ oz. \$15; oz. \$50

LARGE SINGLE FRINGED

New Carnival Mixed. An F₂ hybrid with a display of colors far superior to any other. These include blue, white, crimson, rose, scarlet, salmon, salmon-pink, carmine, bright rose, light pink, red, lavender, cream-pink and variegated, starred and edged combinations of white with rose, pink and blue. The $3\frac{1}{2}$ -inch flowers are of the grandiflora type, mostly waved or ruffled and many fringed. About 20% are regular grandiflora size. The plants, ideal for bedding, form 12 to 15-inch mounds 20 inches across, loaded with flowers all season.

$\frac{1}{256}$ oz. 65c; $\frac{1}{128}$ oz. \$1.15; $\frac{1}{64}$ oz. \$1.85; $\frac{1}{32}$ oz. \$3.25; $\frac{1}{16}$ oz. \$5.50; $\frac{1}{8}$ oz. \$9.50; $\frac{1}{4}$ oz. \$16.50; oz. \$50

Fluffy Ruffles, Mixed. The medium dwarf plants are for bedding. The large flowers are fringed and ruffled in delightful colors. $\frac{1}{128}$ oz. 90c; $\frac{1}{64}$ oz. \$1.50; $\frac{1}{32}$ oz. \$2.60; $\frac{1}{16}$ oz. \$4.50; $\frac{1}{8}$ oz. \$8; $\frac{1}{4}$ oz. \$13.50; oz. \$45.

Fringed Snowstorm. Free-flowering compact 13-inch plants with pure white, fringed flowers. Tr. pkt. 50c; $\frac{1}{128}$ oz. 90c; $\frac{1}{64}$ oz. \$1.65; $\frac{1}{32}$ oz. \$2.90; $\frac{1}{16}$ oz. \$5; $\frac{1}{8}$ oz. \$8.75; $\frac{1}{4}$ oz. \$15.

NEW PAN-AMERICAN DWARF SINGLE FRINGED GRANDIFLORAS

Extremely uniform, these, the finest of all, will give you that extra profit. Try them.

Ballerina. All-America, 1952. A single F₁ hybrid with fringed, deep salmon-pink, 4-inch flowers on compact, 10-inch plants.

Crusader. The gay rose-pink stripes on the white petals of this F₁ hybrid are nice.

Fire Dance. All-America, 1956. Uniformly dwarf compact plants with large, single fringed, vivid scarlet-red flowers having golden yellow throats. Try it.

La Paloma. Huge, well-fringed pure white, yellow-throated single flowers on 12-inch plants. An F₁ hybrid fine for Easter pots.

Prima Donna. All-America, 1955. A single F₁ hybrid with fringed, bright rose-pink, big flowers on 12-inch plants.

Above 5, 1/2 tr. pkt. \$1; tr. pkt. \$1.90;
1/128oz. \$3.85; 1/64oz. \$7.50; 1/32oz. \$13.50;
1/16oz. \$25; 1/8oz. \$45; 1/4oz. \$80

DWARF CALIFORNIA GIANTS

A superb strain of single Petunias unexcelled for pot-culture. The dwarf, sturdy plants, in 3 or 4-inch pots, will bloom when only 6 inches high. The beautifully ruffled and fringed flowers, often over 5 inches across, with open, well-marked throats, are produced freely.

Ramona Strain. Dark and Light Shades Mixed. Tr. pkt. \$1.50; 1/64oz. \$2.50; 1/32oz. \$4.25; 1/16oz. \$7.50; 1/8oz. \$13; 1/4oz. \$23; oz. \$85.

Extra Dwarf Mixed. A new strain dwarfer than Ramona and extra fine for pot-culture. Contains 80% large, open throated, fringed flowers from crimson to pink. Fine for pots and flats. 1/128oz. \$1.50; 1/64oz. \$2.50; 1/32oz. \$4.25; 1/16oz. \$7.50; 1/8oz. \$13; 1/4oz. \$23; oz. \$85.

Little Giants, Mixed. Ruffled and waved, deep-throated flowers of Dwarf California Giant type but of smaller size, averaging 2 inches across. They are freely produced on compact, 8 to 10-inch plants for flat and pot sale. The colors range from deep crimson to white in every combination. Tr. pkt. 85c; 1/64oz. \$1.50; 1/32oz. \$2.75; 1/16oz. \$5; 1/8oz. \$8.50; 1/4oz. \$15.

PAN-AMERICAN ALL-DOUBLE GIANT FRINGED

This strain is the ultimate in Double Petunias. Not only is it the finest fringed, largest, most double flowered, 100 per cent grandiflora, but the dwarf plants, exceptionally uniform, are very free-flowering and fine for pot culture. For this a December sowing, grown cool, makes the best plants in 4 or 5-inch pots by May, but a January or early February sowing gives good 3 to 4-inch May plants.



Petunia, Glorious All-Double Dwarf

MAYTIME PETUNIA

(Bronze Medal Winner for 1958)

Try this beautiful new Maytime. The clear light salmon pink fringed flowers are 3 1/2 to 4 inches across and 100% grandiflora. The free flowering, very uniform, compact 12-inch plants are base branching and spread 24 to 30 inches.

1/2 tr. pkt. \$2.50; tr. pkt. \$4;
1/128oz. \$7; 1/64oz. \$12; 1/32oz. \$20;
1/16oz. \$32; 1/8oz. \$55; 1/4oz. \$95.

GLORIOUS MIXTURE

Made with 30% Allegro (bright deep salmon), 40% Caprice (dark rose-pink), 10% Sonata (white), 10% Rhapsody (burgundy-wine), 5% Nocturne (deep violet-purple), 5% Minuet (lavender). The best of all. 1/2 tr. pkt. \$2.25; tr. pkt. \$4; 1/128oz. \$7.60; 1/64oz. \$14.45; 1/32oz. \$28; 1/16oz. \$55; 1/8oz. \$84.

Please Note: The percentage of Sonata (white) in our Glorious Mixture has been reduced from 20% to 10%. However as Sonata germinates more rapidly than the others the Sonata seedlings are larger and look healthier. The tendency therefore is to use more Sonata seedlings than the other colors and so a predominance of white prevails. If all seedlings are transplanted regardless of size the color mixture will be correct.

PETUNIA

In January or February sow the seed of pot-plant varieties indoors to have flowering plants ready for spring. For flat-grown plants sow seed indoors February or March. Don't over-cover the seed, and 65 degrees gives best germination.



Petunia, Single Dwarf Bedding, Velvet Ball

BALCONY

Balcony Mixed. Sprawling, 18-inch plants with large flowers in well-balanced colors. Fine for window-boxes. $\frac{1}{16}$ oz. 50c; $\frac{1}{4}$ oz. \$1.50; oz. \$4.50; $\frac{1}{4}$ lb. \$13.50.

SINGLE DWARF BEDDING

These are also known as the *Hybrida nana compacta* class. The plants are dwarf and compact, from 10 to 15 inches high, and covered with a multitude of flowers.

Admiral, Reselected. The most attractive of all dwarf blue bedding Petunias, having large, rich violet-blue flowers with wavy edges. Tr. pkt. 75c; $\frac{1}{64}$ oz. \$1.30; $\frac{1}{32}$ oz. \$2.20; $\frac{1}{16}$ oz. \$3.65; $\frac{1}{8}$ oz. \$6.60; $\frac{1}{4}$ oz. \$11.

Blue Mound. More compact plant than any other of similar mid-blue color. Free-flowering and early to bloom in flats or pots. $\frac{1}{16}$ oz. 45c; $\frac{1}{4}$ oz. \$1.35; oz. \$4.

Celestial Rose, Improved. Select strain with rich, satiny deep rose flowers on free-flowering, uniformly dwarf plants. $\frac{1}{16}$ oz. 55c; $\frac{1}{4}$ oz. \$1.65; oz. \$4.95; $\frac{1}{4}$ lb. \$15.

Elk's Star. This is an extra-fine strain with nice dwarf compact plants heavily covered with real blue-purple flowers with white stars. Splendid for dwarf, neat margins and for pot-culture. $\frac{1}{32}$ oz. 90c; $\frac{1}{16}$ oz. \$1.50; $\frac{1}{8}$ oz. \$2.65; $\frac{1}{4}$ oz. \$4.50; oz. \$13.50.

Fire Chief. Sensational new spectrum-red with a scarlet-red glow. Profuse $2\frac{1}{2}$ -inch flowers on nice 12-inch plants. $\frac{1}{32}$ oz. 80c; $\frac{1}{16}$ oz. \$1.40; $\frac{1}{8}$ oz. \$2.35; $\frac{1}{4}$ oz. \$4; oz. \$12.

Glitters. All-America, 1957. A dwarf compact bedding Petunia with flowers of scarlet with large white radial and edge blotches. Ht. 12 in. $\frac{1}{2}$ tr. pkt. 95c; tr. pkt. \$1.75; $1/128$ oz. \$3.25; $\frac{1}{64}$ oz. \$6; $\frac{1}{32}$ oz. \$11; $\frac{1}{16}$ oz. \$20; $\frac{1}{8}$ oz. \$38; $\frac{1}{4}$ oz. \$72.

Glow. Carmine-rose with white throat, on dwarf plants. $\frac{1}{32}$ oz. 50c; $\frac{1}{16}$ oz. 80c; $\frac{1}{8}$ oz. \$1.50; $\frac{1}{4}$ oz. \$2.50; oz. \$7.50.

Heavenly Blue, Selected. Good-sized, medium to light, clear silver-blue flowers. $\frac{1}{16}$ oz. 55c; $\frac{1}{4}$ oz. \$1.65; oz. \$5.

King Henry. A very dwarf, compact plant with small, rich velvety blood-red flowers. Fine for low beds. $\frac{1}{64}$ oz. 85c; $\frac{1}{32}$ oz. \$1.50; $\frac{1}{16}$ oz. \$2.60; $\frac{1}{8}$ oz. \$4.50; $\frac{1}{4}$ oz. \$8; oz. \$24.

Rosy Morn, Dwarf Impvd. Rosy pink with white throat on dwarf, compact plants. $\frac{1}{16}$ oz. 50c; $\frac{1}{4}$ oz. \$1.50; oz. \$4.50; $\frac{1}{4}$ lb. \$13.50.

Snowball Improved. The best white with large flowers on dwarf, compact, vigorous, free-flowering plants. $\frac{1}{16}$ oz. 55c; $\frac{1}{8}$ oz. \$1; $\frac{1}{4}$ oz. \$1.75; oz. \$5.25; $\frac{1}{4}$ lb. \$16.

Velvet Ball. Dwarf, compact plants covered with deep blood-red $2\frac{1}{2}$ -inch flowers. $1/128$ oz. 50c; $\frac{1}{64}$ oz. 85c; $\frac{1}{32}$ oz. \$1.40; $\frac{1}{16}$ oz. \$2.50; $\frac{1}{8}$ oz. \$4.50; $\frac{1}{4}$ oz. \$8; oz. \$24.

Velvety Crimson. Real velvety red-crimson with Celestial Rose plant habit. $\frac{1}{16}$ oz. 55c; $\frac{1}{4}$ oz. \$1.65; oz. \$5; $\frac{1}{4}$ lb. \$15.

Violacea. Deep violet blooms on dwarf, uniform plants. Comes very true. $\frac{1}{16}$ oz. 45c; $\frac{1}{4}$ oz. \$1.35; oz. \$4; $\frac{1}{4}$ lb. \$12.

SINGLE DWARF FORMULA MIXED

New mixture of the best varieties blended to include all colors in this class. It has been changed to meet expressed requests from our customers for less blues and whites and greater variety of other colors. $\frac{1}{16}$ oz. 50c; $\frac{1}{8}$ oz. 80c; $\frac{1}{4}$ oz. \$1.50; oz. \$4.50; $\frac{1}{4}$ lb. \$13.50.

F₁ BEDDING MULTIFLORAS

Very true to color, plain-edged, $2\frac{1}{2}$ -inch flowers on dwarf, compact, laden plants.

Comanche. The reddest of red Petunias, brighter, more uniformly scarlet-red and larger than Fire Chief, on 13-inch plants.

Linda (Improved Silver Medal). An F₁ hybrid with clean salmon-pink, 3-inch flowers on compact, 11-inch plants.

Paleface. The most vigorous, free-flowering, 10-inch bedder with pure white flowers with a small creamy eye.

Above 3, $\frac{1}{2}$ tr. pkt. 90c; tr. pkt. \$1.65; $1/128$ oz. \$3; $\frac{1}{64}$ oz. \$5.50; $\frac{1}{32}$ oz. \$10; $\frac{1}{16}$ oz. \$18; $\frac{1}{8}$ oz. \$30; $\frac{1}{4}$ oz. \$50.

Red Satin. All-America, 1957. Bright scarlet, non-fading with compact, 13-inch plants literally covered with flowers.

$\frac{1}{2}$ tr. pkt. 90c; tr. pkt. \$1.75; $1/128$ oz. \$3.25; $\frac{1}{64}$ oz. \$6; $\frac{1}{32}$ oz. \$11; $\frac{1}{16}$ oz. \$20; $\frac{1}{8}$ oz. \$35; $\frac{1}{4}$ oz. \$60.

PHLOX DRUMMONDI

Twinkle, Dwarf Star Mixed. All-America, 1957. Nice star-shaped flowers in beautiful colors all summer on 6-inch plants. $\frac{1}{32}$ oz. 50c; $\frac{1}{16}$ oz. 85c; $\frac{1}{4}$ oz. \$2.50; oz. \$7.50.

Large-flowering Very Dwarf, Mixed. This grows 6 inches high, each flower stem bearing an umbel of a dozen brilliant florets. $\frac{1}{16}$ oz. 35c; $\frac{1}{4}$ oz. \$1; oz. \$3; $\frac{1}{4}$ lb. \$9.

Large-flowering Very Dwarf, Scarlet. $\frac{1}{16}$ oz. 35c; $\frac{1}{4}$ oz. \$1; oz. \$3; $\frac{1}{4}$ lb. \$9.

PORTULACA

All-Double, XXX Mixed. A very high percentage of double flowers. The flowers are very full-petalled, of large size, and produced in great numbers above the attractive, deep green, dwarf foliage. The mixture includes every color. When blooming in the flat the plants sell very readily. $\frac{1}{16}$ oz. 40c; $\frac{1}{4}$ oz. \$1.20; oz. \$3.60; $\frac{1}{4}$ lb. \$11.

SALPIGLOSSIS

Candelabra, Mixed. Well-branched, 2½-foot plants having funnel-shaped flowers with dark veins, against the contrasting grounds. $\frac{1}{4}$ oz. 40c; oz. \$1.25; $\frac{1}{4}$ lb. \$3.75.

SCABIOSA

Imperial Giant Hybrids, Mixed. The flowers are large and made up entirely of broad, frilled petals arranged in a compact ball unlike the flatter pin-cushion type. The 3½-foot plants are upright with long wiry stems. $\frac{1}{4}$ oz. 45c; oz. \$1.35; $\frac{1}{4}$ lb. \$4; lb. \$12.

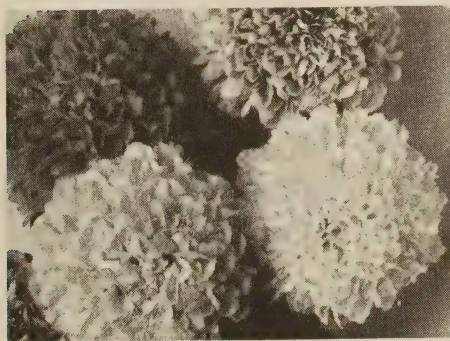
Tom Thumb, Mixed. Dwarf 8-inch plants and double, medium-sized flowers. $\frac{1}{4}$ oz. 60c; oz. \$1.80; $\frac{1}{4}$ lb. \$6; lb. \$18.

SWEET PEAS

Early-flowering Mixture. The finest blend. $\frac{1}{2}$ oz. 30c; oz. 55c; $\frac{1}{4}$ lb. \$1.50; lb. \$5.50.

Giant Spencer Mixture. In well-balanced proportions. Oz. 30c; $\frac{1}{4}$ lb. \$1; lb. \$3.

Spring Flowering Mixture (Cuthbertson). Follows the Early, but with greater heat resistance. Oz. 40c; $\frac{1}{4}$ lb. \$1.25; lb. \$4.



Scabiosa, Imperial Giant Hybrids



Portulaca, All-Double, XXX Mixed

SALVIA

For flat plants seed indoors in February or March, giving bottom heat to help germination, and water sparingly. The dwarf ones make nice pot-plants if started in January.

America. Globe of Fire. The plants are 20 inches high and covered with masses of brilliant scarlet blooms. $\frac{1}{8}$ oz. 90c; $\frac{1}{4}$ oz. \$1.50; $\frac{1}{2}$ oz. \$2.75; oz. \$5; $\frac{1}{4}$ lb. \$15; lb. \$45.

Bonfire. Compact 2-foot bushes, long spikes of brilliant scarlet. $\frac{1}{8}$ oz. 75c; $\frac{1}{4}$ oz. \$1.30; $\frac{1}{2}$ oz. \$2.30; oz. \$4; $\frac{1}{4}$ lb. \$13.50; lb. \$40.

Farinacea, Blue Bedder. A 2½-foot plant, with deep lavender-blue spikes. $\frac{1}{16}$ oz. 45c; $\frac{1}{4}$ oz. \$1.35; $\frac{1}{2}$ oz. \$2.35; oz. \$4; $\frac{1}{4}$ lb. \$14.

NEW FIREBALL

The dwarfest of all, only 8 to 10 inches high and blooms from very, very early up to frost. Plants are base-branching with many more vivid scarlet-red flower spikes. Easy to sell, blooms in the flat. Try it. $\frac{1}{16}$ oz. \$1.10; $\frac{1}{8}$ oz. \$1.95; $\frac{1}{4}$ oz. \$3.50; $\frac{1}{2}$ oz. \$6.50; oz. \$12. Supply limited.

FIREWORKS

A nice new dwarf 11-inch strain like St. John's Fire, but the blooms are larger, they develop earlier and show more vivid scarlet color right up to frost. A new variety which shows good color in the flat-grown plants. $\frac{1}{16}$ oz. \$1.10; $\frac{1}{8}$ oz. \$1.95; $\frac{1}{4}$ oz. \$3.50; $\frac{1}{2}$ oz. \$6.50; oz. \$12.

Splendens. Scarlet Sage. Scarlet spikes on 3-foot plants. $\frac{1}{8}$ oz. 75c; $\frac{1}{4}$ oz. \$1.25; $\frac{1}{2}$ oz. \$2.25; oz. \$4; $\frac{1}{4}$ lb. \$12; lb. \$45.

St. John's Fire. An early dwarf brilliant red Salvia, 12 inches high. Unexcelled for pots. This variety is one of the finest for dwarf beds, coming to bloom early and carrying its great brilliance of color right up to hard frost. $\frac{1}{16}$ oz. 80c; $\frac{1}{8}$ oz. \$1.40; $\frac{1}{4}$ oz. \$2.65; $\frac{1}{2}$ oz. \$4.65; oz. \$8; $\frac{1}{4}$ lb. \$24; lb. \$85.

Zurich. Bushy, 16-inch growth with full, scarlet spikes. Early. $\frac{1}{8}$ oz. \$1; $\frac{1}{4}$ oz. \$1.65; $\frac{1}{2}$ oz. \$2.90; oz. \$5; $\frac{1}{4}$ lb. \$15; lb. \$50.

SNAPDRAGON

For early summer cut-flowers sow about Feb. 1st and for flat-plant sale sow about March 1st.

RUST-RESISTANT STRAINS

Now you can grow perfect Snaps where you once failed due to rust infection. Rust-resistant seed germinates better, the plants are more vigorous, and the foliage clean.

Super Giants. The finest of all the tall strains. The 3-foot plants bear many spikes closely set with giant blooms.

Alaska. Fine clear white.	Copper King. Bronzy.
Campfire. Scarlet.	Crimson. Dark foliage.
Canary Bird. Canary.	Pink Sensation. Pink.

Each, $\frac{1}{16}$ oz. 40c; $\frac{1}{8}$ oz. 65c; $\frac{1}{4}$ oz. \$1.20;
oz. \$3.50; $\frac{1}{4}$ lb. \$10.50

Super Giants Mixed. This is a splendid mixture of the above and all other available colors and is very well balanced. The flowers are of enormous size and well placed on magnificent spikes. The plants are strong growing, rust-free, and very free flowering. $\frac{1}{16}$ oz. 30c; $\frac{1}{8}$ oz. 55c; $\frac{1}{4}$ oz. 90c; $\frac{1}{2}$ oz. \$1.60; oz. \$2.70; $\frac{1}{4}$ lb. \$8.

Half-Dwarf Mixed. With this rust-resistant strain the plants grow about 18 inches high and produce large flowers on stems long enough for cutting. It is very popular for flat-grown plants. $\frac{1}{8}$ oz. 55c; $\frac{1}{4}$ oz. 90c; oz. \$2.70; $\frac{1}{4}$ lb. \$8.

Snapdragons will always be popular both for cut-flowers and for growing in garden beds. Well-grown seedling plants are always in steady demand in the spring. Have a supply ready.

REGULAR STRAINS

These are not rustproof and are useful where there has been no difficulty with rust in growing Snapdragons.

Half-Dwarf, Black Prince. While this strain is not rust-proof it is outstanding for its dark black-crimson flower, dark stem and dark green foliage. It has gained great favor in this half dwarf class having sturdy 20-inch plants. $\frac{1}{16}$ oz. 45c; $\frac{1}{4}$ oz. \$1.35; oz. \$4.

Miniature, Magic Carpet Mixed. Finest of all very dwarf Snapdragons, for carpet plantings and rock-gardens. They grow 6 inches high and come in attractive colors. $\frac{1}{16}$ oz. 45c; $\frac{1}{4}$ oz. \$1.35; oz. \$4.

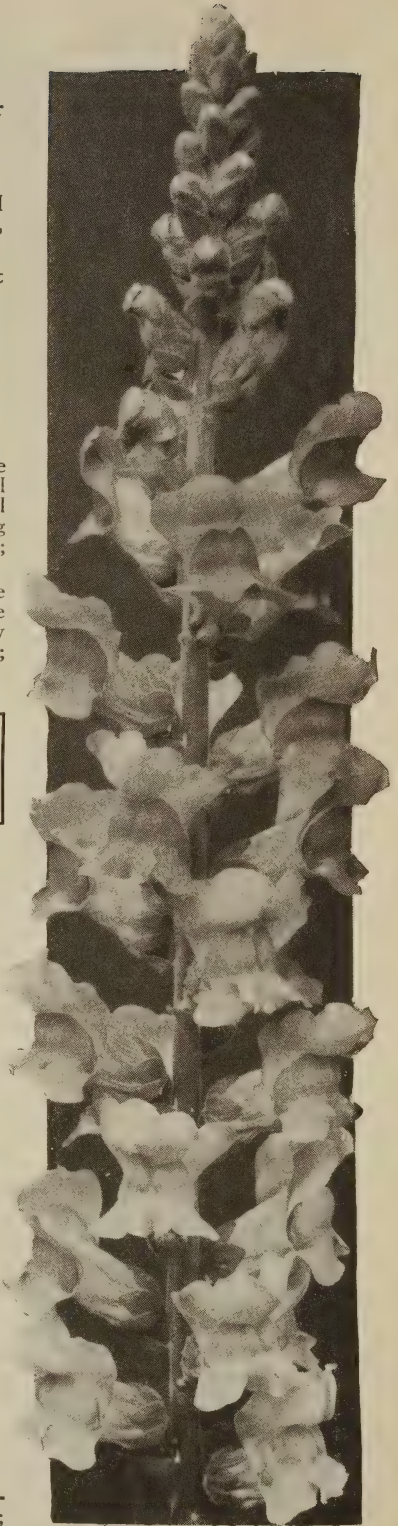
GIANT RUFFLED "TETRA-SNAPS"

A new race created by treating normal flowers with Colchicine which made a fundamental change in the cell formation, converting diploids into tetraploids. This resulted in larger, fuller, ruffled flower spikes, heavier stems and sturdier 2 $\frac{1}{2}$ -foot plants.

Tetra-Snaps Mixed. A complete range of colors in this magnificent new race of outstanding Snapdragons. $\frac{1}{16}$ oz. 65c; $\frac{1}{8}$ oz. \$1.15; $\frac{1}{4}$ oz. \$2; $\frac{1}{2}$ oz. \$3.50; oz. \$6; $\frac{1}{4}$ lb. \$18.

STATICE

Sinuata. Many-branched 18-inch plants with flower clusters at each branch end. **Deep Blue,** oz. 75c; $\frac{1}{4}$ lb. \$2.25; lb. \$6.75; and **Mixed,** oz. 75c; $\frac{1}{4}$ lb. \$2.25; lb. \$6.75.



Forbes Super Giant Snapdragon

STOCKS

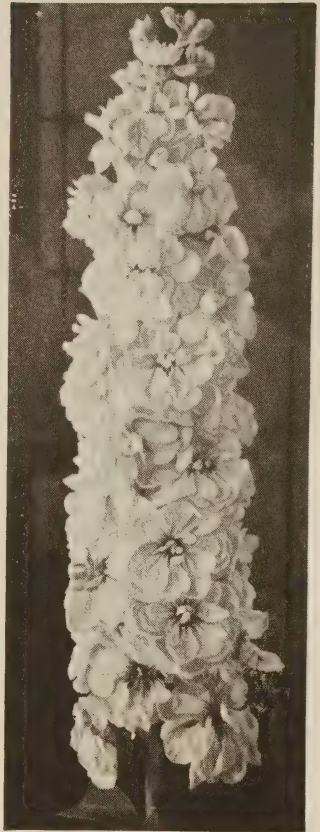
For greenhouse cut-flowers sow up to early February in sterilized soil. For outdoor culture sow in February and set out in April for June flowers.

Improved Giant Bismarck, Mixed. For both inside and outdoor culture. The 2½-foot robust, pyramidal plants have long-stemmed, large spikes of double very early flowers. ⅓oz. 45c; ¼oz. \$1.25; oz. \$3.75; ¼lb. \$11.

Large-Flowering, Dwarf Ten Weeks. Dwarf, compact, pyramidal 12-inch strain for pot-culture and bedding. Start in March. **Blood-Red and Mixed.** Each, ⅓oz. 45c; ¼oz. 75c; oz. \$2.25; ¼lb. \$6.75; lb. \$20.

New Trysomic 7-Week Stocks Mixed

A new race of Branching Stocks notable for its extreme earliness, blooming 3 weeks before Dwarf Ten Weeks. It will bloom in flats or pots for bedding plant sale. The central flower spike, 6-inches high, blooms first and the plant then produces several flower branches reaching a height of 12 to 15 inches. Trysomic 7-Week comes about 86% doubles. If the weaker single seedlings are discarded, when at the 4-leaf stage, the stronger growing seedlings will be about 100% doubles. The colors range from white through pink and rose, deep crimson, dark blue and purple. ⅓oz. 90c; ⅓oz. \$1.50; ½oz. \$2.60; ¼oz. \$4.50; oz. \$16.



Stocks, Giant Bismarck

THUNBERGIA

Sow indoors in February for pot-plant sale in May.

Mixed. White, buff, orange and yellow flowers with black centers, from June to frost, on vines with ornamental foliage. Fine for window-boxes, hanging-baskets. ¼oz. 50c; oz. \$1.50; ¼lb. \$4.50.

TORENIA

For spring plants, sow indoors in February.

Fournieri compacta, Blue. Dwarf 8-inch plants covered with sky-blue, snap-like, yellow throated flowers with violet spots on lower petals; from June to frost. ⅓oz. 75c; ½oz. \$1.25; ¼oz. \$2.25.

TITHONIA

Torch. All-America Winner, 1951. This is easily grown from seeds like Zinnias. The 4½-foot plants bear orange-red, golden centered, single flowers like a large single Marigold, from August to frost. Thrives on hot weather and is disease-free. ⅓oz. 45c; ¼oz. \$1.25; oz. \$3.75.

VINCA ROSEA

Periwinkle. They bloom up to frost. The glossy, deep green 15-inch plants do well in both sun and partial shade. Start indoors in January or February with bottom heat and transplant twice. The plants are entirely immune to all insect attack. **Mixed only.** ¼oz. 60c; oz. \$1.80; ¼lb. \$5.50.

VERBENA

Sow indoors in February–March, giving bottom heat, for pot and flat-plants for spring.

Giant Hybrids. Fine strong, compact, free-flowering, one-foot plants. Immense flower heads with individual florets an inch across.

Beauty of Oxford Hybrids. Rose shades.

Crimson Glow. Fine deep crimson.

Lavender Glory. True lavender.

Royale. Royal blue with cream-yellow eye.

Salmon King. Attractive deep salmon.

Vivid. This is an intense, fiery scarlet.

White. Large, pure white flower-heads.

Each, ⅓oz. 35c; ¼oz. 95c; oz. \$2.85

Giant Hybrids Mixed. A mixture of all the available colors. ⅓oz. 35c; ¼oz. 95c; oz. \$2.85; ¼lb. \$8.50; lb. \$25.

Special Dwarf Bedding, Mixed. A select, medium-flowered strain which is ideal for bedding plants and flowering pot-plants for spring sale. Compact, erect 8-inch plants are covered with attractive flower-heads. Delightful colors, including extra scarlet. ⅓oz. 40c; ½oz. 65c; ¼oz. \$1.15; oz. \$3.50; ¼lb. \$10.50; lb. \$32.

ZINNIAS

The most popular annual in American gardens. For flat-grown bedding plants start seed in March indoors, give bottom heat to get good germination.

NEW ICE CREAM

The first Zinnia in a pure cream color—not buff—not white—not pale yellow—but refreshing pure cream. The huge, 5-inch cactus flowers, deep and very well-formed will harmonize with all other colors. The strong heavily flowered plants grow 3 feet high. $\frac{1}{16}$ oz. 35c; $\frac{1}{4}$ oz. 90c; oz. \$2.75; $\frac{1}{4}$ lb. \$8.50.



Gold Medal
Giant Dahlia-
flowered Zinnias

Giant Dahlia-fl. Gold Medal Mixed.

Huge flowers, 5 inches across with center petals tending to incurve, giving a deep, full effect. The strong vigorous plants, $2\frac{1}{2}$ to 3 ft. high, are free-flowering. $\frac{1}{4}$ oz. 40c; oz. \$1.10; $\frac{1}{4}$ lb. \$3.30; lb. \$10.

Separate colors.

Canary Bird. Canary-yellow.
Dream. Deep rosy lavender.
Eldorado. Salmon-apricot.

Exquisite. Rose, deep center.
Golden Dawn. Clear golden.
Illumination. Rose-pink.
Meteor. Darkest of all reds.

Polar Bear. Creamy white.
Royal Purple. Deep purple.
Salmon Queen. Salmon-rose.
Will Rogers. Deep scarlet.

Each of the above, $\frac{1}{4}$ oz. 45c; oz. \$1.35; $\frac{1}{4}$ lb. \$4; lb. \$13

Blaze. Huge double, quilled flowers of the Giant Cactus type in a vivid scarlet tinged orange on robust 3-foot plants. $\frac{1}{16}$ oz. 35c; $\frac{1}{4}$ oz. 90c; oz. \$2.75; $\frac{1}{4}$ lb. \$8.50.

Burpee's Hybrids, Mixed. The extra-large, double, cactus flowers have ruffled petals. Strong 3-foot plants and many colors, including pastels. $\frac{1}{4}$ oz. 75c; oz. \$2.25; $\frac{1}{4}$ lb. \$6.75; lb. \$20.

California Giants, Florist's Strain, Mixed. The 3-foot plants, of the same robust habit as Giant Dahlia-flowered, throw strong lateral branches from which the best flowers come. These often reach 4 to 5 inches across, but with the petals laid back one over the other, giving a flattened appearance. $\frac{1}{4}$ oz. 45c; oz. \$1.35; $\frac{1}{4}$ lb. \$4; lb. \$12.

Dwarf Double Mixed (*elegans pumila*). Bushy, 18-inch plants with an abundance of fully double flowers, averaging 2 inches across, held above the foliage. This is a nicely proportioned blend of all the available colors. $\frac{1}{4}$ oz. 35c; oz. \$1; $\frac{1}{4}$ lb. \$3.25; lb. \$10.

Fantasy, Mixed. Nicely rounded, shaggy flowers of medium size, with ray-like petals curled and interlaced on 2 to $2\frac{1}{2}$ -foot plants. $\frac{1}{8}$ oz. 35c; $\frac{1}{4}$ oz. 50c; oz. \$1.50; $\frac{1}{4}$ lb. \$4.50; lb. \$13.

Lilliput, Mixed. Beautiful, miniature, perfectly double flowers, deeply globe-shaped, in a wide range of colors. The 15 to 18-inch compact plants are excellent for bedding. $\frac{1}{4}$ oz. 40c; oz. \$1.20; $\frac{1}{4}$ lb. \$3.50; lb. \$11.

Lilliput, Pastel Mixture. In 45 days from seed the flowers come in apricot, peach, creamy yellow, shell-pink, salmon, light rose, and orchid. $\frac{1}{4}$ oz. 50c; oz. \$1.50; $\frac{1}{4}$ lb. \$4.50; lb. \$13.

Lilliput, Tom Thumb, Mixed. A very dwarf, compact strain for pot-culture, borders and rock-gardens. The plants, 4 to 6 inches high, are covered with tiny Lilliput flowers in red, orange, yellow, pink, rose and pastel shades. $\frac{1}{8}$ oz. 30c; $\frac{1}{4}$ oz. 50c; oz. \$1.50; $\frac{1}{4}$ lb. \$4.50.

Ortho Polka. A new giant-flowered Peppermint Stick with striped flowers twice the size and larger, more vigorous, 3-foot plants. The fully double flowers are impressively striped in pink, rose, red, lavender, purple; each in combination with white, also yellow with orange and with scarlet, and red with orange. $\frac{1}{16}$ oz. 35c; $\frac{1}{4}$ oz. \$1; oz. \$3; $\frac{1}{4}$ lb. \$9.

Peppermint Stick Mixed. Most of the medium-sized, double flowers have striped petals on 2-foot bushy plants from early right up to frost. $\frac{1}{4}$ oz. 50c; oz. \$1.50; $\frac{1}{4}$ lb. \$4.50; lb. \$13.

Persian Carpet Mixed. All-America, 1952. Variegated flowers the size of a silver dollar, like tiny dahlias, each with its pointed petals tipped with a contrasting color. These become 12-inch compact mounds of brilliant color. $\frac{1}{8}$ oz. 55c; $\frac{1}{4}$ oz. \$1; oz. \$3; $\frac{1}{4}$ lb. \$9.

Red Riding Hood. (*Gracillima*.) Miniature bright crimson double flowers, about half the size of Lilliputs, on dwarf, compact plants 2 feet high. $\frac{1}{4}$ oz. 50c; oz. \$1.50; $\frac{1}{4}$ lb. \$4.50.

Super Giants Mixed. Strong, 3-foot plants bearing flowers, $5\frac{1}{2}$ inches across, in a great range of color and form, some Dahlia-flowered, others California Giants and still others Chrysanthemum-like in rare and unusual shades. $\frac{1}{8}$ oz. 40c; $\frac{1}{4}$ oz. 65c; oz. \$2; $\frac{1}{4}$ lb. \$6; lb. \$18.

Seeds of Perennial Flowers

The varieties in this section produce plants which live on from year to year, increasing in size and beauty with age. A few exceptions are the biennials listed, such as *Campanula Medium*, *Digitalis*, etc., which bloom the second year and then die. All may be produced from seed.

Culture. The seed is generally started outdoors from June to September, and the young plants are either set in their permanent places in the fall and given light protection the first season, or carried over the first winter in a coldframe. Starting seed in the cool weather of spring is really better and the larger plants produced are easier wintered over.

ALYSSUM

Saxatile citrinum. Similar to compactum, but with lovely pale yellow flowers. $\frac{1}{8}$ oz. 55c; $\frac{1}{4}$ oz. \$1; oz. \$3; $\frac{1}{4}$ lb. \$9.

Saxatile compactum. Large clusters of bright golden yellow flowers in early spring, on gray-foliaged 12-inch plants. $\frac{1}{4}$ oz. 35c; oz. \$1; $\frac{1}{4}$ lb. \$3.

ANCHUSA

Italica, Lissadell. Tall spikes of gentian-blue from June to September, on 4-ft. plants. $\frac{1}{4}$ oz. 50c; oz. \$1.50; $\frac{1}{4}$ lb. \$4.50.

Myosotidiflora. Quite distinct with dwarf 12-inch plants, having large rounded leaves and sprays of clear blue forget-me-not-like flowers in April and May. $\frac{1}{16}$ oz. 85c; $\frac{1}{4}$ oz. \$2.50; oz. \$7.50.

ANTHEMIS

Tinctoria. A profusion of lemon-yellow daisy flowers which are excellent for cutting all summer, on 2-foot plants with cut foliage. $\frac{1}{4}$ oz. 50c; oz. \$1.50.

ARABIS

Alpina, Snowcap. Compact, dwarf 8-inch plants and shining, snow-white cushions of flowers. $\frac{1}{16}$ oz. 30c; $\frac{1}{4}$ oz. 85c; oz. \$2.50; $\frac{1}{4}$ lb. \$7.50.

Alpina, Spring Charm. Similar to the white form, but the flowers are a real deep red color. $\frac{1}{32}$ oz. 50c; $\frac{1}{16}$ oz. 85c; $\frac{1}{4}$ oz. \$2.50.

ASTER

Alpinus, Goliath. Compact, 9-inch plants with lavender-blue, daisy flowers with yellow centers in May and June. $\frac{1}{32}$ oz. 60c; $\frac{1}{16}$ oz. \$1; $\frac{1}{4}$ oz. \$3; oz. \$9.

AUBRIETA

Giant-Flowered Hybrids. Spreading, 6-inch plants bearing flowers of lavender, mauve, lilac, etc. in April and May. $\frac{1}{16}$ oz. 35c; $\frac{1}{4}$ oz. \$1; oz. \$3.



Alyssum saxatile compactum

AQUILEGIA (Long-Spurred)

Blue Shades. The 3-foot plants bear huge long-spurred blue flowers in many attractive shades. $\frac{1}{16}$ oz. 65c; $\frac{1}{4}$ oz. \$2; oz. \$6.

Chrysantha. While this is not as long-spurred as the other varieties it is most dependable with large, well-poised, clear yellow flowers. $\frac{1}{16}$ oz. 85c; $\frac{1}{4}$ oz. \$2.50; oz. \$7.50.

Crimson Star. Huge attractive flowers of rich crimson with white centers. $\frac{1}{16}$ oz. 85c; $\frac{1}{4}$ oz. \$2.50; oz. \$7.50.

Orange and Scarlet Shades. Very attractive shades with long spurs, on 2½-foot plants. $\frac{1}{16}$ oz. 85c; $\frac{1}{4}$ oz. \$2.50; oz. \$7.50.

Rose Queen. Nice shades of rose with white corolla and yellow centers, on 3-foot plants. $\frac{1}{16}$ oz. 85c; $\frac{1}{4}$ oz. \$2.50; oz. \$7.50.

Snow Queen. The large, pure white flowers are held erect on strong, wiry stems. The vigorous plants grow about 3 feet high. $\frac{1}{16}$ oz. 85c; $\frac{1}{4}$ oz. \$2.50; oz. \$7.50.

Mrs. Scott Elliott's Hybrids. Large flowers with broad guard petals and long spurs poised on long stems. Ht. 3 ft. $\frac{1}{16}$ oz. 40c; $\frac{1}{4}$ oz. \$1.10; oz. \$3.25; $\frac{1}{4}$ lb. \$9.50.

McKANA'S GIANT MIXED COLUMBINE

All-America, 1955. Huge, 4-inch flowers with 3-inch spurs in much richer deeper colors than any other strain, on 3-foot plants. $\frac{1}{16}$ oz. 55c; $\frac{1}{16}$ oz. 95c; $\frac{1}{4}$ oz. \$2.85; oz. \$8.50.

BAPTISIA

Australis. False Indigo. Indigo-blue, pea-shaped flower sprays in May and June on 3-ft. plants. $\frac{1}{4}$ oz. 50c; oz. \$1.50.

BELLIS PERENNIS

Extra-Double Giant. Very fine, huge flowering, extra-double strain, with very full-centered flowers on compact 6-inch plants. This variety is particularly good for basket plant sale. **Dark Red, Rose, White, and Mixed.** Each, $\frac{1}{16}$ oz. 85c; $\frac{1}{4}$ oz. \$2.50; oz. \$7.50; $\frac{1}{4}$ lb. \$22.



Dwarf Double Red Grenadin Carnation

CAMPANULA

Medium Single, Mixed. Canterbury Bells. A biennial with 2 $\frac{1}{2}$ -foot plants and large single bells in dark blue, light blue, rose and white in June. $\frac{1}{4}$ oz. 30c; oz. 90c; $\frac{1}{4}$ lb. \$2.75.

Medium calycanthema, Mixed. Cup-and-Saucer. This erect, 2 $\frac{1}{2}$ -foot, biennial flowers in June. The colors include dark blue, light blue, rose and white. Always in good demand, in northern latitudes they are best wintered in coldframes. $\frac{1}{8}$ oz. 35c; $\frac{1}{4}$ oz. 50c; oz. \$1.50; $\frac{1}{4}$ lb. \$4.50.

CANDYTUFT

Gibraltarica. Pale lavender-pink flowers shading to white, in profusion during May and June on plants 10 inches high. $\frac{1}{4}$ oz. 50c; oz. \$1.50; $\frac{1}{4}$ lb. \$4.50.

Sempervirens. White flowers from April to June form a sheet of bloom, covering the dark green foliage. Height 10 inches. $\frac{1}{16}$ oz. 50c; $\frac{1}{4}$ oz. \$1.50; oz. \$4.50; $\frac{1}{4}$ lb. \$14.

CENTAUREA

Dealbata, Rose Delight. Hardy Cornflower with rose-pink, thistle-like flowers from June to August on 2-foot plants with nice foliage. $\frac{1}{8}$ oz. 40c; $\frac{1}{4}$ oz. 75c; oz. \$2.25.

Montana, Blue. Purple-blue Cornflowers, June to September. Silvery foliage. Ht. 1 $\frac{1}{2}$ feet. $\frac{1}{4}$ oz. 50c; oz. \$1.50; $\frac{1}{4}$ lb. \$4.50.



Candytuft (*Iberis sempervirens*)

CARNATION

Dwarf Double Red Grenadin. Compact plants, uniformly 15 inches high, very fine for bedding purposes. The bright scarlet medium-sized, double flowers bloom the first year if started early. $\frac{1}{16}$ oz. 65c; $\frac{1}{4}$ oz. \$2; oz. \$6; $\frac{1}{4}$ lb. \$18; lb. \$50.

Early Dwarf Vienna, Double, Mixed. A hardy 14-inch border plant, with very double, large flowers early in June. $\frac{1}{16}$ oz. 65c; $\frac{1}{4}$ oz. \$2; oz. \$6; $\frac{1}{4}$ lb. \$18; lb. \$50.

Half-High Grenadin. Grassy foliage on 20-inch plants. In June and July double flowers come in **Black-Red, Rose, Scarlet, White, Yellow and Mixed.** Ea., $\frac{1}{16}$ oz. 40c; $\frac{1}{16}$ oz. 65c; $\frac{1}{4}$ oz. \$2; oz. \$6; $\frac{1}{4}$ lb. \$18.

CERASTIUM

Tomentosum. Silvery white 8-inch plants and small white flowers in May-June. $\frac{1}{16}$ oz. 25c; $\frac{1}{4}$ oz. 60c; oz. \$1.75.

CHEIRANTHUS

Allioni, Orange. Upright orange flower-heads on 15-inch plants in May-June. A biennial that must be wintered over in a coldframe. $\frac{1}{4}$ oz. 20c; oz. 50c; $\frac{1}{4}$ lb. \$1.50.

COREOPSIS

Double Sunburst. Large, full, double golden yellow flowers, 2 inches across, on 2 $\frac{1}{2}$ -foot plants. $\frac{1}{4}$ oz. 35c; oz. \$1; $\frac{1}{4}$ lb. \$3.

FOR POPULAR PERENNIAL PLANTS

Grow Dwarf Double Red Grenadin and Early Dwarf Vienna Double Carnations.

DELPHINIUM

Belladonna Improved or Cliveden Beauty. This is an improved strain, with large flowers of light turquoise-blue on 4-foot plants. $\frac{1}{8}$ oz. 55c; $\frac{1}{4}$ oz. 90c; oz. \$3.25; $\frac{1}{4}$ lb. \$11; lb. \$40.

Bellamosum Improved. This is really a dark blue form of the Belladonna, with spikes $2\frac{1}{2}$ inches across. The plants grow $3\frac{1}{2}$ feet high. $\frac{1}{8}$ oz. 55c; $\frac{1}{4}$ oz. 90c; oz. \$3.25; $\frac{1}{4}$ lb. \$11; lb. \$40.

Giant Exhibition Hybrids, Blackmore & Langdon's. The flowers of this fine English strain are enormous, produced on solid erect spikes 6 feet high. Colors include delicate shades of blue, mauve and pink. $\frac{1}{8}$ oz. 60c; $\frac{1}{4}$ oz. \$1; oz. \$3; $\frac{1}{4}$ lb. \$10.

Hollyhock-flowered Wrexham Hybrids. Flowers of superb size, on 6-foot spikes, with beautiful florets in blue, mauve, lilac, purple and violet. $\frac{1}{6}$ oz. 55c; $\frac{1}{4}$ oz. \$1.65; oz. \$5.75; $\frac{1}{4}$ lb. \$20.

Pacific Giant Hybrid Colors. Big, $2\frac{1}{2}$ -inch florets, nearly all double, evenly spaced on well-balanced tapering spikes with thin woody stems. This variety is comparatively mildew-resistant. Height 5 to 7 feet. (Originator's Strain.) **Black Knight**, dark blue; **Blue Bird**, medium blue, white bee; **Cameliard**, lavender; **Galahad**, white; **King Arthur**, violet, white bee; **Lancelot**, lilac, white bee; **Summer Skies**, light blue, white bee. $\frac{1}{6}$ oz. \$1.25; $\frac{1}{8}$ oz. \$2; $\frac{1}{4}$ oz. \$3.50; oz. \$12; $\frac{1}{4}$ lb. \$40.

Pacific Giant Hybrid, Astolat. Pink shades; brown bee. $\frac{1}{6}$ oz. \$2; $\frac{1}{8}$ oz. \$3.50; $\frac{1}{4}$ oz. \$6; oz. \$18.

Pacific Giant Hybrids, Round Table, Mixed. From dark purple to pale blue, orchid, and white. (Originator's Strain.) Pkt. 50c; $\frac{1}{6}$ oz. \$1.10; $\frac{1}{8}$ oz. \$1.85; $\frac{1}{4}$ oz. \$3.25; oz. \$11; $\frac{1}{4}$ lb. \$40.



Delphinium, White Galahad
Pacific Giant Hybrids

DIGITALIS

Giant Shirley, Mixed. Foxglove. A biennial with very large flowers in shades of pink and white, attractively spotted with brown and maroon. The tall, stately plants, about 4 feet high, hold long spikes which are striking against a dark background. Start the seed in June and winter over. After frozen in, mulch lightly. $\frac{1}{8}$ oz. 35c; $\frac{1}{4}$ oz. 65c; oz. \$2; $\frac{1}{4}$ lb. \$6.

Excelsior Hybrids. Florets are horizontal or upturned and surround the stems instead of all on one side. They come in white, cream, primrose, rose and pink shades, each blotched inside deep purple. Ht. 4 ft. $\frac{1}{8}$ oz. 60c; $\frac{1}{4}$ oz. \$1; oz. \$3; $\frac{1}{4}$ lb. \$9.

DORONICUM

Caucasicum magnificum. Daisy-like flowers of golden yellow on good stems for cutting, above heart-shaped leaves. Thrives in damp soil. The seed germinates very slowly. $\frac{1}{6}$ oz. \$1.15; $\frac{1}{4}$ oz. \$3.50; oz. \$10.50.

DIANTHUS PLUMARIUS

Double Scoticus, Special Florist Strain. Free-flowering plants and blooms 2 inches across on 12-inch stems. Pink, rose, salmon and white, many zoned. $\frac{1}{6}$ oz. 50c; $\frac{1}{4}$ oz. \$1.50; oz. \$4.50.

Dwarf Double, Mixed. Free-flowering, 12-inch plants with double, fragrant blooms on wiry stems, above grassy foliage. $\frac{1}{6}$ oz. 50c; $\frac{1}{4}$ oz. \$1.25; oz. \$3.75; $\frac{1}{4}$ lb. \$12.

GAILLARDIA

These rapid-growing perennials will make large plants for spring sale from a July sowing. They are popular because they bloom throughout the summer.

Burgundy. Wine-red, $2\frac{1}{2}$ -inch flowers on long, stiff-stemmed $2\frac{1}{2}$ -foot plants. $\frac{1}{8}$ oz. 40c; $\frac{1}{4}$ oz. 75c; oz. \$2.25; $\frac{1}{4}$ lb. \$7.

Goblin. Large yellow flowers with deep red centers on globular, 15-inch plants. $\frac{1}{8}$ oz. 40c; $\frac{1}{4}$ oz. 75c; oz. \$2.25; $\frac{1}{4}$ lb. \$7.

TRY SOME OF THE NEW FLOWERS FOR 1958

Look over the new flowers we show inside the back cover. These are the new improved strains which will give you that extra profit and put you in right with your best customers.

GEUM

Beautiful double flowers, from June to September, the first year from seed sown early indoors. Ht. 2 ft. **Lady Stratheden**, golden yellow. **Mrs. Bradshaw**, orange-scarlet. Each, $\frac{1}{8}$ oz. 50c; $\frac{1}{4}$ oz. 80c; oz. \$2.50.

GYPSOPHILA

Paniculata, Single. **Baby's Breath.** Real tiny white single flowers in graceful feathery panicles on thread-like stems during June and July. Very popular for cutting. Height 3 feet. $\frac{1}{4}$ oz. 35c; oz. \$1; $\frac{1}{4}$ lb. \$3; lb. \$9.

Paniculata, Double, Snow White. The double form of **Baby's Breath** and comes about 80 per cent double, on 2½-foot plants. $\frac{1}{16}$ oz. 50c; $\frac{1}{4}$ oz. \$1.50; oz. \$4.50.

HEUCHERA

Sanguinea splendens. **Coralbells.** Very graceful panicles of coral-red, bell-like flowers on 12-inch stems, from June to September, above dwarf, heart-shaped foliage. Height 2 feet. $\frac{1}{32}$ oz. \$1; $\frac{1}{8}$ oz. \$3; $\frac{1}{4}$ oz. \$5.50.

HOLLYHOCK

Superb Double, Mixed. The tall spikes, 7 feet high, are closely set with showy double flowers in a great range of beautiful colors. $\frac{1}{4}$ oz. 55c; oz. \$1.65; $\frac{1}{4}$ lb. \$5.

Single Mixed. $\frac{1}{4}$ oz. 30c; oz. 90c; $\frac{1}{4}$ lb. \$2.75.

LATHYRUS

Latifolius Mixed. **Everlasting Sweet Pea.** A perennial vine reaching 7 feet in height with many flowers in pink, red tones and white. $\frac{1}{4}$ oz. 50c; oz. \$1.50.

LAVENDER

Munstead Strain. The finest strain obtainable, with plants 1 foot high which produce their lavender-blue flowers in June. Very early. $\frac{1}{16}$ oz. 40c; $\frac{1}{4}$ oz. \$1.20; oz. \$3.50.

LIATRIS

Pycnostachya. Unusual in appearance with attractive, 4-foot, rich purple flower spikes in August-September. Likes dry soil. $\frac{1}{16}$ oz. 35c; $\frac{1}{4}$ oz. \$1; oz. \$3.

Spicata. Nice lavender-purple, 2-foot flower spikes in September-October. Does best in moist soil in half or full shade. $\frac{1}{16}$ oz. 35c; $\frac{1}{4}$ oz. 90c; oz. \$2.75.

LINUM

Perenne, Blue. Pale blue, round flowers all summer, on slender, graceful stems above feathery foliage. Height 1½ feet. $\frac{1}{4}$ oz. 25c; oz. 65c; $\frac{1}{4}$ lb. \$2.



Gaillardia grandiflora, **Goblin**
See page 45

FOR POPULAR PERENNIAL PLANTS

*Grow Dwarf Double Red Grenadin and
Early Dwarf Vienna Double Carnations.*

LUPINUS

Russell, Mixed. Well-rounded, 3-foot spikes closely set with individual florets an inch across. The 4-foot plants have attractive foliage. In unusual color combinations. $\frac{1}{8}$ oz. 35c; $\frac{1}{4}$ oz. 65c; oz. \$2.15; $\frac{1}{4}$ lb. \$6.50.

LYCHNIS

Haageana Hybrids. Large 2-inch flowers in orange-red, scarlet and crimson on 12-inch plants. $\frac{1}{16}$ oz. 30c; $\frac{1}{4}$ oz. 80c; oz. \$2.40.

MYOSOTIS

Forget-me-not. Dainty, freely produced flowers for edgings. **Palustris** thrives in moist shade; the **Alpestris** varieties do well in sun. Sow the seed in July or August and transplant to coldframes to have bloom in May.

Alpestris, Victoria. These are dwarf, rounded, 8-inch plants so desirable for margins of borders and for pot-culture. It is a biennial variety and is always in great demand as a basket plant in the spring. **Blue Ball** (mid-blue), **Pale Blue**, **Indigo Blue**, **Rose**, **White** and **Formula Mixed**. Each, $\frac{1}{16}$ oz. 50c; $\frac{1}{4}$ oz. \$1.50; oz. \$4.50; $\frac{1}{4}$ lb. \$13.50.

Palustris Semperflorens. A true perennial, with small, pale blue flowers in May and June, on plants 10 inches high. $\frac{1}{16}$ oz. 30c; $\frac{1}{4}$ oz. 95c; oz. \$2.75; $\frac{1}{4}$ lb. \$8.

NEW VARIETIES FOR 1958

Look over the new flowers we show inside the back cover. These are the new improved strains which will give you that extra profit and put you at the top of the heap with your best customers. They'll like them and come back for more. Try some this year.

PLATYCODON

Mariesi Dwarf Blue. Deep blue, 3-inch bell-flowers with pointed recurved petals, in June and July on 16-inch stems. $\frac{1}{16}$ oz. 45c; $\frac{1}{4}$ oz. \$1.25; oz. \$3.75.

POPPY

Grow the seedlings in pots, as they resent transplanting. The named Orientals do not all come true from seed.

ICELAND POPPIES

Kelmescott Giants, Mixed. Larger flowers than in any other strain, often 3 inches across, held more erect on long stiff stems, unexcelled for cutting. The colors range from deep scarlet, through delicate pinks and buffs, to white. $\frac{1}{16}$ oz. 35c; $\frac{1}{4}$ oz. \$1; oz. \$3; $\frac{1}{4}$ lb. \$9.

ORIENTAL POPPIES

Beauty of Livermere. Extra-large dark oxblood-red blooms. $\frac{1}{16}$ oz. 45c; $\frac{1}{4}$ oz. \$1.25; oz. \$3.75.
Brilliant. Fiery red flowers, 6 inches across, on 3-foot plants. $\frac{1}{16}$ oz. 45c; $\frac{1}{4}$ oz. \$1.25; oz. \$3.75.
Princess Victoria Louise. Soft orange-salmon. Very nice. $\frac{1}{16}$ oz. 45c; $\frac{1}{4}$ oz. \$1.25; oz. \$3.75.
Orientele, Mixed. Fine mixture of all the colors. $\frac{1}{16}$ oz. 45c; $\frac{1}{4}$ oz. \$1.25; oz. \$3.75; $\frac{1}{4}$ lb. \$11.

PRIMULA

Polyanthus, Colossea. Huge flowers in very unusual new colors. Extra fine. $\frac{1}{32}$ oz. 60c; $\frac{1}{16}$ oz. \$1; $\frac{1}{4}$ oz. \$3; oz. \$9.

Polyanthus, Giant Munstead, Mixed. The 1-foot plants, bear bunch flowers in varied colors. $\frac{1}{32}$ oz. 85c; $\frac{1}{16}$ oz. \$1.50; $\frac{1}{8}$ oz. \$2.60; $\frac{1}{4}$ oz. \$4.50; oz. \$13.50.

Polyanthus, Monarch, Mixed. Bunch flowers in strong colors and soft shades on compact 9-inch plants. $\frac{1}{32}$ oz. 85c; $\frac{1}{16}$ oz. \$1.50; $\frac{1}{4}$ oz. \$4.50; oz. \$13.50.

Vulgaris. English Primrose. Primrose-yellow flowers, one to a stem, on 9-inch plants. $\frac{1}{16}$ oz. 60c; $\frac{1}{4}$ oz. \$1.75; oz. \$5.50.

PYRETHRUM

Single, Robinson's Dark Crimson. Tufts of finely cut foliage with long stems and yellow-centered, dark blood-red daisies. $\frac{1}{16}$ oz. 50c; $\frac{1}{4}$ oz. \$1.50; oz. \$4.50.

Single Hybrids, Mixed. A well-balanced assortment of pink, rose, crimson and white. $\frac{1}{16}$ oz. 50c; $\frac{1}{4}$ oz. \$1.50; oz. \$4.50.

Extra Double Mixture. Tufted centers. The percentage of doubles will be greatest the second year. Height 2 feet. $\frac{1}{16}$ oz. 90c; $\frac{1}{4}$ oz. \$2.75; oz. \$8.25.



Double and Single Pyrethrum

RUDBECKIA

Purpurea. The purple Coneflower, with red-purple daisy flowers from July to October, on 4-foot plants. Thrives in dry soils. $\frac{1}{16}$ oz. 35c; $\frac{1}{4}$ oz. \$1; oz. \$3.

SAPONARIA

Ocymoides. A very useful hardy, 12-inch rock-garden plant with rose-pink flowers all summer. $\frac{1}{16}$ oz. 25c; $\frac{1}{4}$ oz. 75c; oz. \$2.25.

SCABIOSA

Caucasica, Isaac House Giant Hybrids, Mixed. Large, fringed, ruffled flowers from palest lavender to the darkest blue. $\frac{1}{16}$ oz. 45c; $\frac{1}{4}$ oz. \$1.10; oz. \$3.75; $\frac{1}{4}$ lb. \$14.

SHASTA DAISY

Giant Double. Fluffy, shaggy white double 4-inch flowers with narrow, slightly overlapping, irregular petals. Only 50 per cent will come double. $\frac{1}{32}$ oz. 75c; $\frac{1}{16}$ oz. \$1.15; $\frac{1}{8}$ oz. \$2; $\frac{1}{4}$ oz. \$3.50; oz. \$10.50.

Single, Conqueror. Large 3-inch white daisies with broad overlapping petals. Ht. 3 ft. $\frac{1}{4}$ oz. 50c; oz. \$1.50; $\frac{1}{4}$ lb. \$4.50.

STOKESIA

Cyanea, Blue. From July to October, lavender-blue centaurea-like flowers, 4 inches across on 1 to 1½-foot plants. ⅓oz. 60c; ¼oz. \$1; oz. \$3.

THERMOPSIS

Caroliniana. Long racemes of yellow Lupine-like flowers in June and July on fine 2-foot plants. Grows in sun or shade. Sell these as companion plants with Delphinium. ⅓oz. 25c; ¼oz. 75c; oz. \$2.25.

SWEET WILLIAM

Wee Willie. A new annual Sweet William with single red and white flowers in 6 to 8 weeks from seed. Very valuable for flat sales, as it shows color when 2 in. high. ⅓oz. 65c; ¼oz. \$2; oz. \$6.

These hardy biennials best sown in June or July in frames. Transplant the young plants to the field in September or October to bloom the following spring.

Dwarf Double, Mixed. An unusually fine strain, ideal for bedding. The plants are dwarf, very compact, growing 8 inches high, and make nice pot-plants for spring. The colors include the rich dark tones, as well as the bright, light shades. ⅓oz. 60c; ¼oz. \$1; oz. \$3; ¼lb. \$9.

Double, Mixed. More popular than the single varieties, because of the fullness of the flower. The colors include all of the known shades and are very attractive. The strong, robust plants grow 1½ feet high. ⅓oz. 45c; ¼oz. 85c; oz. \$2.50; ¼lb. \$7.50; lb. \$22.

Single. This is the popular, 18-inch free-flowering strain with enormous trusses of bloom.

Newport Pink. ⅓oz. 35c; ¼oz. 60c; oz. \$2; ¼lb. \$6.

Single Mixed. A well-balanced color blend. ¼oz. 50c; oz. \$1.50; ¼lb. \$4.50.

Midget Single Mixed. This is a wonderfully fine strain for pot-culture, as it forms very small, balled plants 4 inches high, with brightly colored small flowers, many of which are tri-colored. ⅓oz. 50c; ¼oz. \$1.50; oz. \$4.50; ¼lb. \$13.50.

TRITOMA

Early-flowering Hybrids. Drooping, tubular flowers in spikes above long, narrow, foliage in orange-yellow shades. Ht. 3 feet. ⅓oz. 40c; ¼oz. 65c; oz. \$2; ¼lb. \$6.

VERONICA

Spicata Blue. Terminal spikes of violet-blue in June and July, on 1½-foot plants. It does well in ordinary soil in a sunny location and is extremely hardy in all latitudes. ⅓oz. 25c; ¼oz. 75c; oz. \$2.25.

WALLFLOWER

Best treated in northern latitudes as biennials. Sow the seed in June or July and winter over in a protected coldframe for transplanting outdoors when safe in the spring.

English, Double, Mixed. A very fine mixture made up from the choicest varieties, with nicely balanced colors. Delightfully fragrant. ⅓oz. 35c; ¼oz. \$1; oz. \$3.



Arkwright Ruby Violas

VIOLA CORNUTA

Good-sized plants can be ready by late spring from a January indoor seeding, although they are usually started in summer for bloom the following spring. Set out in September. After plants are frozen in, give light protection. They like deep enriched soil.

Arkwright Ruby. This large-flowered variety has ruby-crimson blooms with terra-cotta. ⅓oz. 60c; ⅓oz. \$1; ¼oz. \$3; oz. \$9.

Blue Perfection. In this variety the petals are bright mid-blue, and the flowers large. ⅓oz. 35c; ¼oz. 65c; ¼oz. \$2; oz. \$6.

Chantreyland. Striking, all perfectly formed, large, pure apricot flowers through a long season. ⅓oz. 65c; ¼oz. \$2; oz. \$6.

Lutea splendens. Flowers of deep sulphur-yellow on dwarf, compact plants. ⅓oz. 50c; ¼oz. \$1.50; oz. \$4.50.

White Perfection. An attractive pure white rounded flower on a nice neat plant.

Mixed. A well-balanced blend of all above. Each of above 2, ⅓oz. 45c; ¼oz. \$1.35; oz. \$4.

Try these New Flowers for 1958

Here are some fine new strains which you should grow next spring, for those customers who appreciate, and want to try out, the newer and better flowers. These will make good friends for you.

Marigold, Color Magic. Bushy plants like Spry but with 1½-inch double flowers in shades of yellow and orange irregularly marked with dark red. The color changes as the season progresses. ⅓oz. 35c; ¼oz. 60c; oz. \$2; ¼lb. \$6.

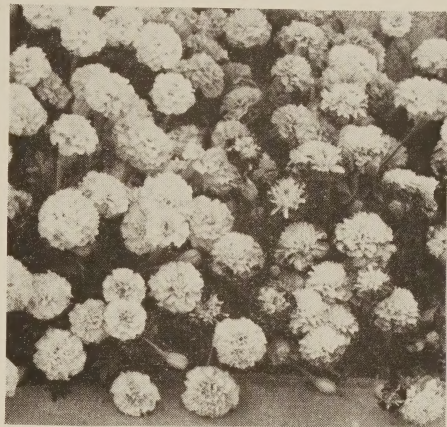
Marigold, Petite. 1958 A.A. Bronze Medal Winners.

Petite Gold. An improvement on Golden Pygmy but without orange markings.

Petite Harmony. Like Spry but earlier, dwarfer, more floriferous and more richly colored.

Petite Orange. A more prolific bloomer and truer in color than Dwarf Sunkist.

Each, ⅓oz. 40c; ¼oz. \$1.20;
oz. \$3.50; ¼lb. \$10.



Marigold, Petite



Forbes Big Beauties Pansy

Pansy, Forbes Big Beauties. NEW. Our brightest formula color mixture with over a quarter in light colors. Blotched, mottled and bordered 4-inch flowers in a wonderful color range beyond belief, with round, overlapping petals on stocky, compact plants. ⅓oz. \$1; ⅛oz. \$1.75; ¼oz. \$3; oz. \$10; ¼lb. \$30; lb. \$90.

Sweet William, Wee Willie. A new strain of annual Sweet William that is ultra dwarf and compact. In gay combinations of crimson, deep rose pink, and white, the single flowers bloom early when the plants are about 2 in. high. Very valuable for flat sales since the mature plants reach a height of only 4 to 6 inches. ⅓oz. 65c; ¼oz. \$2; oz. \$6.

Petunia, Maytime. All-America Bronze Medal Winner for 1958. This new F1 hybrid grandiflora has unusually clear light salmon pink flowers which hold extremely well under all growing conditions. The 10 to 12-inch, globe-shaped plants are very uniform and compact with a base branching habit which often produces a 24 to 30-inch spread. Maytime is tremendously free flowering and you may expect an abundance of 3½ to 4-inch fringed blooms open at one time on each plant. This variety is admirably suited to borders or edgings and will make a fine pot plant subject. ⅓tr. pkt. \$2.50; tr. pkt. \$4; 1/128 oz. \$7; ⅓oz. \$12; ⅓oz. \$20; ⅓oz. \$32; ⅓oz. \$55; ¼oz. \$95.



Petunia, Maytime

FORBES SEEDS



NEW KEYSTONE GIANT PEPPER (Mosaic Resistant). The thick walled fruit is blocky in shape and sets in great numbers about even in time with Yolo Wonder. In addition, the sturdy, bushy plants are very highly resistant to mosaic and yield a very dependable crop where mosaic prevails. 1/4oz. 40c; oz. \$1.10; 1/4lb. \$3.25; lb. \$9.75; 5 lbs. \$46.25.

Form 3547 Requested

LIBRARY
50
U.S. DEPT. OF AGRIC.
WASHINGTON 25, D.C.

RETURN POSTAGE GUARANTEED

ALEXANDER FORBES & CO.
SEEDSMEN
Morris Turnpike, Millburn, N. J.

MILLBURN, N. J.
Permit No. 47

BULK RATE
U. S. POSTAGE
PAID

ALEXANDER FORBES & CO.
SEEDSMEN • MILLBURN, NEW JERSEY